



Airport Traffic Report October 2008

European passenger traffic down -4.0% during October 2008

The 'ACI EUROPE Airport Traffic Report - October 2008' includes **108 airports** in total.




The overall **passenger** traffic at European airports decreased by **-4.0%** in **October 2008** compared with October 2007. The overall **freight** traffic among European airports decreased **-8.4%** in October 2008 when compared with the corresponding month in 2007. The overall figure for **movements** at European airports decreased **-2.6%** in October 2008 when compared with October 2007.




The accumulated figure for **passenger** traffic **January to October 2008** increased by **1.7%** compared with the corresponding period 2007. The accumulated figure for **freight** traffic during **January to October** decreased by **-1.0%** and **movements** increased by **0.8%** during the corresponding period when compared with 2007.




Airports welcoming more than 25 million passengers per year (Group 1), airports welcoming between 10 and 25 million passengers (Group 2), airports welcoming between 5 and 10 million passengers (Group 3) and airports welcoming less than 5 million passengers per year reported an average increase / decrease of **-4.6%**, **-4.4%**, **-2.7%** and **-2.2%** respectively when compared with October 2007. The same comparison of October 2008 with October 2006 demonstrates an average increase of **+1.2%**, **+2.8%**, **+2.6** and **+7.4%** respectively.




Examples of airports that experienced the highest increase in passenger traffic per group, when comparing October 2008 with October 2007, include:

- **Group 1 airports** – Paris CDG (**+3.4%**), Paris ORY (**+2.0%**) and Rome Fiumicino (**0.7%**);
- **Group 2 airports** – Zurich (**+3.2%**), Berlin TXL (**+2.7%**), Helsinki (**+1.7%**) and Geneva (**+1.5%**);
- **Group 3 airports** – Moscow Vnukovo (**+12.8%**), Berlin SXF (**+11.9%**), Milan/Orio al Serio (**+6.4%**) and Toulouse (**+6.2%**);
- **Group 4 airports** – Bucharest (**+20.0%**), Liege (**+13.6%**), Riga (**+13.1%**) and Porto (**+12.7%**).

Airport	Passengers		Commercial movements		Freight		
	 October 2008		 October 2008		 October 2008		
LONDON	LHR	5636105	-3,7%	40 409	-1,2%	119 501	4,2%
PARIS	CDG	5167150	3,4%	47 289	3,9%	N/A	N/A
FRANKFURT	FRA	4717437	-4,9%	41 425	-1,4%	174367	-4,5%
AMSTERDAM	AMS	4276291	-2,4%	38 090	-1,5%	135817	-7,7%
MADRID	MAD	4075064	-13,3%	38 762	-8,3%	30456	-2,4%
MUNICH	MUC	3111568	-1,8%	36 439	0,1%	21621	-6,7%
ROME	FCO	3090771	0,7%	29 693	1,8%	11916	-5,8%
LONDON	LGW	2779288	-10,2%	21 594	-5,1%	8136	-43,3%
BARCELONA	BCN	2471743	-16,3%	26 665	-12,7%	9304	9,3%
PARIS	ORY	2156844	2,0%	19 603	0,5%	N/A	N/A
PALMA DE MALLORCA	PMI	2110668	-4,1%	17 831	-1,5%	1809	-3,4%
ZURICH	ZRH	2003525	3,2%	20 312	1,6%	22803	0,0%
DUBLIN	DUB	1978043	-1,5%	16 784	-0,4%	9041	-14,3%
LONDON	STN	1977758	-6,2%	15 579	-8,0%	17619	-6,0%
COPENHAGEN	CPH	1856186	-4,0%	22 811	0,7%	N/A	N/A
MANCHESTER	MAN	1825157	-9,8%	16492	-11,1%	11932	-26,7%
OSLO	OSL	1725497	-2,8%	21 031	4,4%	4994	-17,0%
DUSSELDORF	DUS	1720298	-2,3%	19 354	-0,9%	6662	29,7%
VIENNA	VIE	1689693	-2,1%	22 691	0,5%	17962	-0,6%
STOCKHOLM	ARN	1602157	-2,4%	19 790	2,6%	8946	-9,9%
MOSCOW	DME	1592822	-3,6%	15 709	-2,1%	12248	2,5%
BRUSSELS	BRU	1586467	-2,0%	20 306	-6,3%	45401	-30,8%
MILAN	MXP	1433668	-29,7%	16 535	-25,6%	29262	-28,9%
ATHENS	ATH	1432255	0,5%	15 130	-6,2%	9648	1,7%
BERLIN	TXL	1365444	2,7%	13 701	2,6%	1689	8,3%
HELSINKI	HEL	1204926	1,7%	16 667	0,0%	11431	-12,3%
MALAGA	AGP	1164146	-9,4%	9 720	-12,2%	410	-17,9%
LISBON	LIS	1143774	-3,8%	11 818	0,5%	7422	5,1%
PRAGUE	PRG	1067856	-4,0%	15 204	1,0%	3580	-17,8%
COLOGNE	CGN	973525	-3,6%	11843	-8,1%	51443	-21,5%
STUTTGART	STR	933283	-5,3%	11635	-4,1%	1472	-14,3%
NICE	NCE	888473	-1,7%	10 699	-3,3%	707	5,4%
GENEVA	GVA	887476	1,5%	10700	-0,1%	2430	-3,9%
ALICANTE	ALC	871407	0,7%	7121	1,6%	334	-15,8%
BIRMINGHAM	BHX	844749	-0,6%	9056	-5,2%	988	-14,7%
GRAN CANARIA	LPA	841970	-6,5%	8 927	-0,2%	2795	-14,0%
WARSAW	WAW	796649	-5,5%	11 302	-3,5%	3264	-9,1%
EDINBURGH	EDI	794533	-3,1%	10 042	-1,9%	699	-66,1%
GLASGOW	GLA	788695	-9,8%	7913	-9,3%	314	3,3%
MILAN	LIN	764436	-14,1%	8 803	-0,1%	1392	-15,0%
BUDAPEST	BUD	755119	-1,7%	9555	-5,8%	4927	-16,3%
MOSCOW	VKO	691816	12,8%	11755	5,4%	2602	18,3%
BERLIN	SXF	658917	11,9%	5 433	7,5%	459	58,8%
TENERIFE SUR	TFS	646382	-13,5%	4283	-16,9%	673,405	-13,4%
VENICE	VCE	609914	-6,9%	6253	-11,7%	3042	56,7%
MARSEILLE	MRS	601384	-0,2%	8340	-2,1%	4126	13,6%
HANNOVER	HAJ	595808	4,4%	6523	-0,1%	209	-48,4%
TOULOUSE	TLS	567059	6,2%	7 380	2,8%	4708	0,5%
ST PETERSBURG	LED	554416	6,1%	7659	-1,0%	2056	-15,8%
FARO	FAO	548545	0,1%	3 978	-0,2%	32	-25,2%
MILAN	BGY	505269	6,4%	4676	-3,6%	10314	-17,5%
NAPLES	NAP	495014	-11,3%	5278	-9,3%	85	-55,2%
VALENCIA	VLC	482654	-8,1%	6952	-1,2%	1288	3,6%
EAST MIDLANDS	EMA	480951	1,1%	6043	5,9%	23890	-4,1%
BUCHAREST	OTP	475337	20,0%	6694	19,7%	1919	50,7%
BERGEN	BGO	464247	6,3%	6 744	-0,1%	252	1,5%
GIRONA	GRO	460513	6,3%	3317	2,6%	4	-81,8%
LANZAROTE	ACE	435057	-8,3%	3871	-6,4%	422	-24,9%
ROME	CIA	417631	-9,3%	2996	-12,6%	1896	-7,9%
BASEL	BSL	403249	5,0%	5208	1,9%	3520	-3,8%
GOTHENBURG	GOT	383653	-4,8%	5 751	-0,7%	4406	-4,7%
HAHN	HHN	371779	-0,2%	3299	-3,2%	10783	-9,5%
OPORTO	OPO	365480	12,7%	4719	12,0%	2737	-5,2%
FUERTEVENTURA	FUE	356221	-13,2%	3335	-8,3%	218	-19,2%
SEVILLA	SVQ	350327	-13,5%	4266	-7,6%	883	42,6%
TENERIFE NORTE	TFN	347487	-3,2%	5028	-1,3%	1911	-18,1%
NUREMBERG	NUE	337707	-5,7%	5040	-5,3%	673	-39,4%
BILBAO	BIO	335723	-12,6%	4695	-4,4%	293	6,4%
RIGA	RIX	335601	13,1%	5048	19,0%	442	-2,9%
STAVANGER	SVG	332931	3,3%	4841	-3,6%	243	-7,1%
TRONDHEIM	TRD	327488	-2,1%	4458	-1,4%	191	-16,9%
BOLOGNA	BLQ	324261	-13,1%	5179	12,4%	2743	66,2%
BORDEAUX	BOD	311583	5,0%	4 522	-1,7%	638	-3,1%
IBIZA	IBZ	305663	-7,6%	3626	-0,9%	296	-15,8%
ABERDEEN	ABZ	302485	-5,3%	9 027	-6,5%	388	27,2%
MALTA	MLA	281239	-6,0%	2423	-8,5%	1395	-9,6%
TURIN	TRN	267663	-9,6%	4018	-7,8%	76	-44,1%
VERONA	VRN	230127	-14,5%	2741	-14,6%	603	-30,4%

Airport	Passengers		Commercial movements		Freight		
	 October 2008		 October 2008		 October 2008		
BARI	BRI	205886	-3,3%	2414	-0,4%	116	24,2%
FUNCHAL	FNC	191143	-5,6%	1836	1,1%	553	-17,4%
STOCKHOLM	BMA	186808	-1,9%	3549	3,3%	24	-27,3%
MENORCA	MAH	180281	-11,3%	2 183	-9,0%	255	-16,2%
FLORENCE	FLR	173359	-3,2%	2591	4,3%	3	-46,9%
VILNIUS	VNO	171303	4,3%	3071	2,3%	332	-14,4%
MALMO	MMX	165946	-11,0%	2297	-5,0%	2622	-32,4%
SOUTHAMPTON	SOU	165700	-7,5%	3933	-4,4%	20	-23,1%
TALLINN	TLL	163459	1,4%	3074	-5,8%	5115	30,3%
LJUBLJANA	LJU	139733	-1,2%	3057	1,4%	787	-33,0%
TROMSOE	TOS	137636	-0,6%	2743	-4,4%	199	2,0%
BODOE	BOO	130514	-6,8%	3271	-4,6%	151	-4,5%
STRASBOURG	SXB	115762	-12,5%	2820	-10,6%	27	-12,9%
DUBROVNIK	DBV	102895	0,0%	1030	1,0%	53	-17,4%
BOURNEMOUTH	BOH	90267	-12,0%	969	-9,2%	2	-73,9%
KRISTIANSAND	KRS	87376	7,4%	2003	-0,5%	42	-2,3%
BRINDISI	BDS	82258	4,8%	961	14,3%	3	-76,2%
ALESUND	AES	78212	8,5%	1094	6,9%	94	4,4%
HAUGESUND	HAU	51448	5,2%	698	-19,3%	31	2,7%
SKOPJE	SKP	48598	-1,8%	900	0,7%	185	17,8%
HUMBERSIDE	HUY	39128	-12,5%	1 247	-2,1%	130	-69,1%
BERLIN	THF	34510	6,8%	1377	-30,7%	39	-25,0%
LIEGE	LGG	23174	13,6%	2324	-2,3%	44130	-0,6%
MADRID	TOJ	2925	-14,2%	1264	-17,7%	N/A	N/A
OHRID	OHD	2791	2,2%	28	-57,6%	N/A	N/A

Airport		Passengers		Commercial movements		Freight	
		 January - October 2008		 January - October 2008		 January - October 2008	
LONDON	LHR	56794361	-1,1%	398321	-0,1%	1182738	9,0%
PARIS	CDG	51968555	2,4%	467285	2,5%	N/A	N/A
FRANKFURT	FRA	45796895	-0,4%	400566	-0,7%	1713867	0,6%
MADRID	MAD	43684236	-0,3%	398500	-0,9%	274670	4,2%
AMSTERDAM	AMS	40982703	0,1%	365 965	-1,0%	1325122	0,7%
ROME	FCO	30600536	9,2%	293 988	6,7%	118015	8,8%
LONDON	LGW	30142191	-1,2%	222760	0,7%	93253	-34,5%
MUNICH	MUC	29675564	3,1%	347545	1,7%	207468	0,1%
BARCELONA	BCN	26419804	-6,3%	275213	-7,0%	87676	9,3%
PARIS	ORY	22335014	-0,2%	195185	-0,5%	N/A	N/A
PALMA DE MALLORCA	PMI	21171768	-1,0%	173359	-1,4%	18388	-5,9%
DUBLIN	DUB	20384733	2,4%	171836	3,8%	N/A	N/A
LONDON	STN	19602227	-4,9%	154543	-6,1%	169016	-2,2%
MANCHESTER	MAN	18851537	-3,5%	166742	-6,5%	121829	-9,9%
ZURICH	ZRH	18815231	7,5%	195906	4,5%	233547	6,7%
MOSCOW	DME	17942117	12,6%	168021	11,6%	109947	15,5%
VIENNA	VIE	16997501	7,8%	224456	6,8%	158109	-0,4%
MILAN	MLX	16735318	-17,7%	184366	-16,8%	350277	-9,5%
OSLO	OSL	16705887	3,3%	194823	5,5%	53524	-4,3%
BRUSSELS	BRU	16127046	6,0%	202956	0,6%	523300	-12,4%
DUSSELDORF	DUS	15696294	2,4%	184 096	2,3%	59815	23,0%
STOCKHOLM	ARN	15642048	3,4%	182 235	6,5%	85301	-0,8%
ATHENS	ATH	14334420	0,3%	151987	-3,2%	94499	5,6%
HELSINKI	HEL	12481395	2,0%	154763	3,1%	101372	-9,1%
BERLIN	TXL	12294623	10,8%	130468	8,3%	14919	13,9%
LISBON	LIS	11741865	2,3%	118710	1,1%	74488	7,2%
NUREMBERG	NUE	11655081	1,1%	146633	-2,9%	31488	0,6%
SEVILLA	SVQ	11647160	-2,0%	146570	-0,6%	20966	-0,3%
MALAGA	AGP	11479242	-4,2%	99565	-6,1%	4124	-16,9%
VALENCIA	VLC	11286501	12,6%	176781	12,3%	29869	11,6%
PRAGUE	PRG	11052724	4,3%	150270	4,3%	35571	-10,5%
GENEVA	GVA	9870532	7,2%	112464	3,7%	24910	1,5%
NICE	NCE	9161596	0,9%	112490	0,0%	6347	-8,6%
COLOGNE	CGN	9033289	0,2%	110810	-7,2%	482533	-20,6%
ALICANTE	ALC	8498830	7,2%	69211	4,9%	5474	43,6%
GRAN CANARIA	LPA	8431350	-0,2%	90 879	3,7%	28125	-8,0%
BIRMINGHAM	BHX	8415013	4,7%	88809	-1,2%	10584	-4,9%
MENORCA	MAH	8348180	2,9%	102862	0,0%	17002	-15,7%
WARSAW	WAW	8311869	4,8%	114936	3,1%	29021	-13,6%
MILAN	MLN	8097650	-4,2%	83407	-1,1%	13707	-5,6%
EDINBURGH	EDI	7761678	0,4%	97786	0,4%	9095	-45,0%
HAUGE SUND	HAU	7742240	2,7%	93543	1,2%	24955	6,5%
BUDAPEST	BUD	7363242	-0,7%	95326	-4,4%	51280	-3,4%
GLASGOW	GLA	7200608	-6,0%	75248	-6,4%	3242	-12,5%
TENERIFE SUR	TFS	6885576	-2,6%	48478	-3,9%	7210	-4,8%
RIGA	RIX	6598153	147,6%	89157	13,4%	22908	-1,0%
VENICE	VCE	6038675	-1,4%	63465	-8,8%	23889	30,7%
TROMSOE	TOS	5705551	3,2%	81401	0,4%	33212	2,2%
BERLIN	SXF	5678358	4,2%	48163	3,2%	3402	7,0%
MILAN	BGY	5511617	13,2%	51284	7,6%	104249	-5,4%
FUERTEVENTURA	FUE	5288495	-1,2%	49133	2,2%	6245	-6,5%
FARO	FAO	5065472	-0,3%	36382	-1,0%	497	-22,7%
BERLIN	SXF	5019441	3,3%	42730	2,7%	2943	1,8%
EAST MIDLANDS	EMA	4988447	6,8%	60327	10,4%	221358	-3,9%
GIRONA	GRO	4826075	17,8%	35983	19,6%	181	-10,0%
IBIZA	IBZ	4681638	-2,9%	55560	-1,0%	4725	-28,7%
LANZAROTE	ACE	4670864	-1,0%	43264	2,8%	4646	-2,6%
BORDEAUX	BOD	4650724	-0,1%	66575	1,5%	17172	43,3%
BERGEN	BGO	4097718	4,9%	62049	1,2%	2339	-22,6%
ROME	CIA	4061007	-11,9%	29524	-16,1%	16808	-13,6%
MALMÖ	MMX	4040753	0,8%	43358	-3,0%	37815	-22,7%
OPORTO	OPO	3942849	15,6%	47893	12,4%	27369	1,8%
BASEL	BSL	3749499	1,4%	49094	1,4%	32814	-10,8%
GOTHENBURG	GOT	3738309	1,1%	53892	4,0%	41507	-18,7%
BILBAO	BIO	3613050	-0,1%	45617	-1,7%	2711	0,6%
TENERIFE NORTE	TFN	3579455	13,3%	51971	6,1%	17213	-18,3%
HAHN	HHN	3429313	-2,2%	33015	-0,8%	104541	18,4%

Airport		Passengers		Commercial movements		Freight	
		 January - October 2008	January - October 2008	 January - October 2008	January - October 2008	 January - October 2008	January - October 2008
TURIN	TRN	3278177	-0,9%	44357	-5,0%	1250	4,5%
VERONA	VRN	3097298	-1,4%	32154	-4,5%	6543	-9,7%
STAVANGER	SVG	3008651	7,7%	44454	0,4%	2669	2,5%
TRONDHEIM	TRD	2951908	3,3%	41063	4,4%	1837	-8,4%
ABERDEEN	ABZ	2835820	-2,8%	87552	-1,6%	3547	4,9%
SOFIA	SOF	2490946	19,4%	32185	14,9%	12371	3,9%
BARI	BRI	2166959	6,3%	24989	7,0%	1205	1,1%
LIEGE	LGG	2112820	17,0%	42469	5,9%	442867	12,0%
BODOE	BOO	2023189	-1,7%	39444	-2,5%	1405	-17,9%
VILNIUS	VNO	1816176	25,3%	32000	27,2%	3412	-4,7%
FLORENCE	FLR	1697854	2,8%	25554	9,6%	69	36,8%
SOUTHAMPTON	SOU	1690127	0,3%	38699	-3,9%	237	4,4%
TALLINN	TLL	1577141	7,9%	29809	14,4%	36456	120,9%
STOCKHOLM	BMA	1562789	3,2%	30150	5,7%	275	45,5%
DUBROVNIK	DBV	1142025	4,9%	10367	0,8%	916	27,1%
STRASBOURG	SXB	1132807	-24,2%	28642	-7,4%	312	-28,8%
BRINDISI	BDS	875582	9,6%	9536	23,8%	117	10,3%
KRISTIANSAND	KRS	767985	3,9%	17444	0,4%	426	-5,1%
ALESUND	AES	691302	6,4%	9355	3,4%	853	1,6%
SKOPJE	SKP	570786	6,0%	9037	1,5%	1769	25,1%
BERLIN	THF	278555	-7,6%	15172	-15,3%	450	-0,2%
MADRID	TOJ	29617	-2,5%	13 020	-6,9%	N/A	N/A

----- Preliminary traffic figures -----

Total commercial passengers

International passengers (enplaned + deplaned) + **domestic passengers** (enplaned + deplaned) + **direct transit passengers** (passengers who arrive at and depart from the airport on a flight bearing the same number. They are counted only ONCE).

Commercial movements

Landing or take off of an aircraft operating a scheduled or non scheduled commercial service.

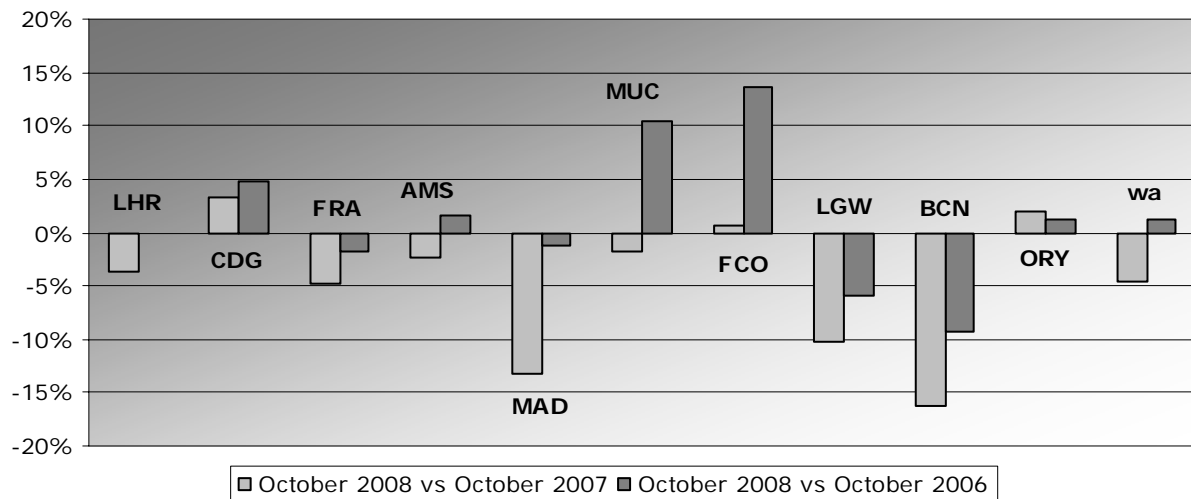
Freight

Freight loaded and unloaded (arriving or departing) at the airport. Freight comprises goods, newspapers, diplomatic bags, parcel post and express parcel.

Group 1
Airports welcoming more than 25 million passengers per year
(percentage traffic variation October 2008 versus 2007 and 2006)

Airport	2008v2007 variation %	2008v2006 variation %
LHR	-3.7%	-0.1%
CDG	3.4%	4.8%
FRA	-4.9%	-1.8%
AMS	-2.4%	1.6%
MAD	-13.3%	-1.2%
MUC	-1.8%	10.5%
FCO	0.7%	13.7%
LGW	-10.2%	-6.0%
BCN	-16.3%	-9.3%
ORY	2.0%	1.2%
wa*	-4.6%	+1.2%

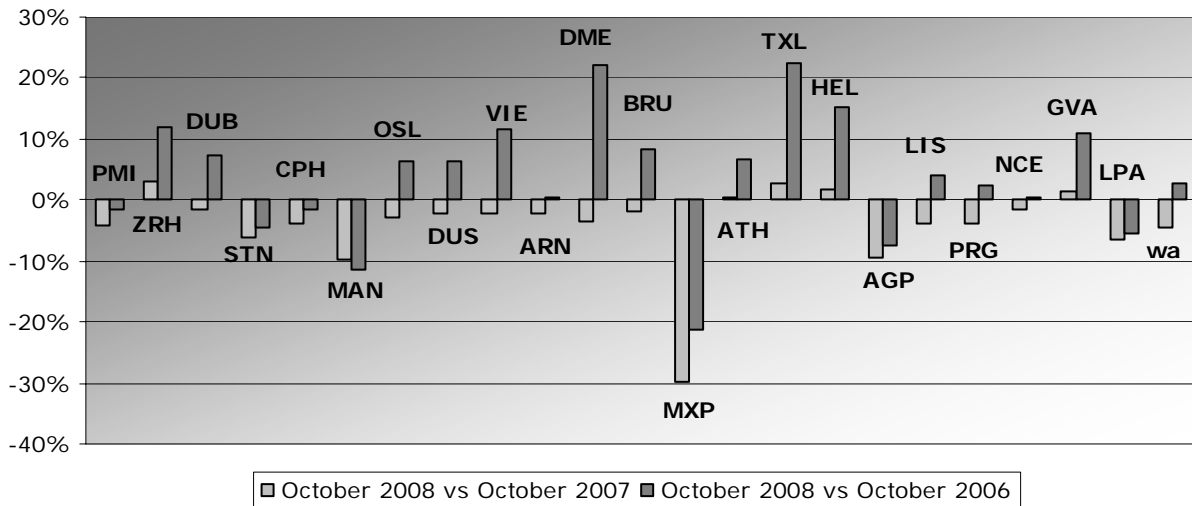
*weighted average=SUM(%change*pax)/SUM(pax)



Group 2
Airports welcoming between 10 and 25 million passengers
per year (percentage traffic variation October 2008 versus 2007 and 2006)

Airport	2008v2007 variation %	2008v2006 variation %
PMI	-4.1%	-1.5%
ZRH	3.2%	12.0%
DUB	-1.5%	7.3%
STN	-6.2%	-4.6%
CPH	-4.0%	-1.5%
MAN	-9.8%	-11.4%
OSL	-2.8%	6.4%
DUS	-2.3%	6.5%
VIE	-2.1%	11.7%
ARN	-2.4%	0.5%
DME	-3.6%	22.2%
BRU	-2.0%	8.3%
MXP	-29.7%	-21.2%
ATH	0.5%	6.6%
TXL	2.7%	22.5%
HEL	1.7%	15.3%
AGP	-9.4%	-7.6%
LIS	-3.8%	4.1%
PRG	-4.0%	2.4%
NCE	-1.7%	0.5%
GVA	1.5%	10.9%
LPA	-6.5%	-5.5%
wa*	-4.4%	+2.8%

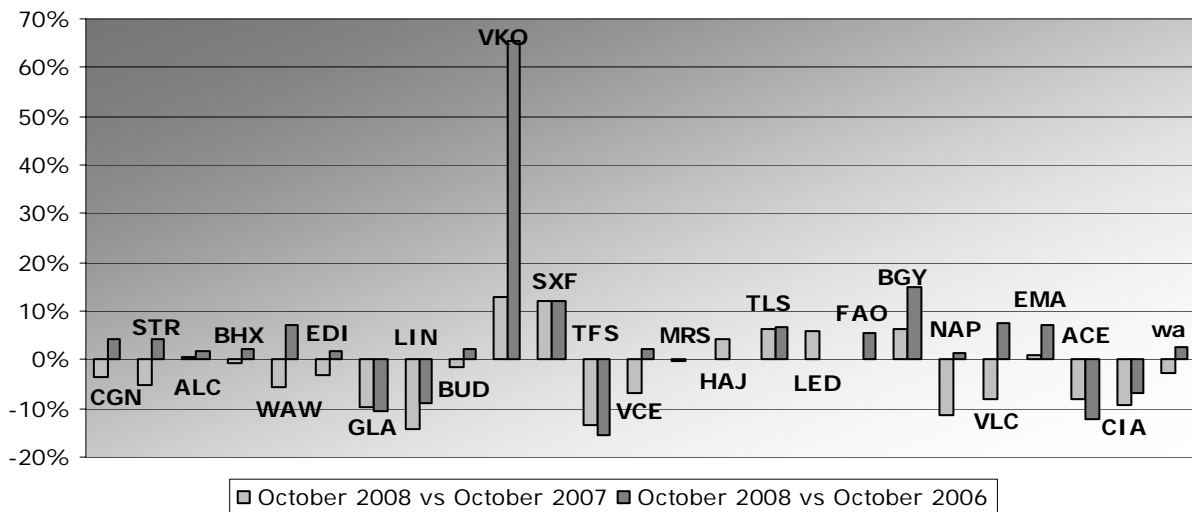
*weighted average=SUM(%change*pax)/SUM(pax)



Group 3
Airports welcoming between 5 and 10 million passengers
per year (percentage traffic variation October 2008 versus 2007 and 2006)

Airport	2008v2007 variation %	2008v2006 variation %
CGN	-3.6%	4.1%
STR	-5.3%	4.2%
ALC	0.7%	1.8%
BHX	-0.6%	2.2%
WAW	-5.5%	7.2%
EDI	-3.1%	1.7%
GLA	-9.8%	-10.7%
LIN	-14.1%	-8.9%
BUD	-1.7%	2.2%
VKO	12.8%	65.3%
SXF	11.9%	11.9%
TFS	-13.5%	-15.5%
VCE	-6.9%	2.4%
MRS	-0.2%	N/A
HAJ	4.4%	0.3%
TLS	6.2%	6.6%
LED	6.1%	N/A
FAO	0.1%	5.5%
BGY	6.4%	15.0%
NAP	-11.3%	1.3%
VLC	-8.1%	7.6%
EMA	1.1%	7.1%
ACE	-8.3%	-12.1%
CIA	-9.3%	-6.9%
wa*	-2.7%	+2.6%

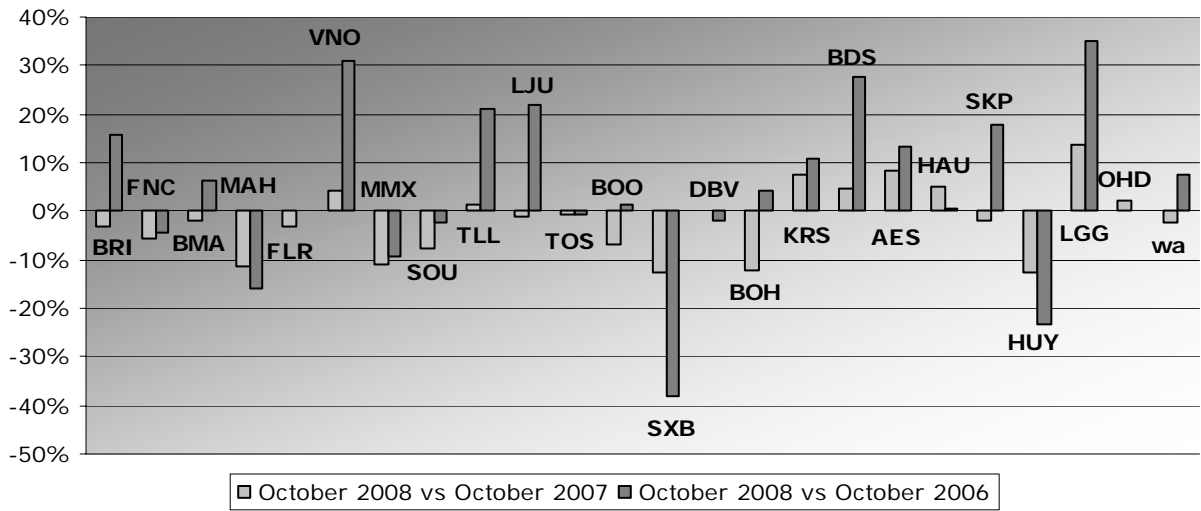
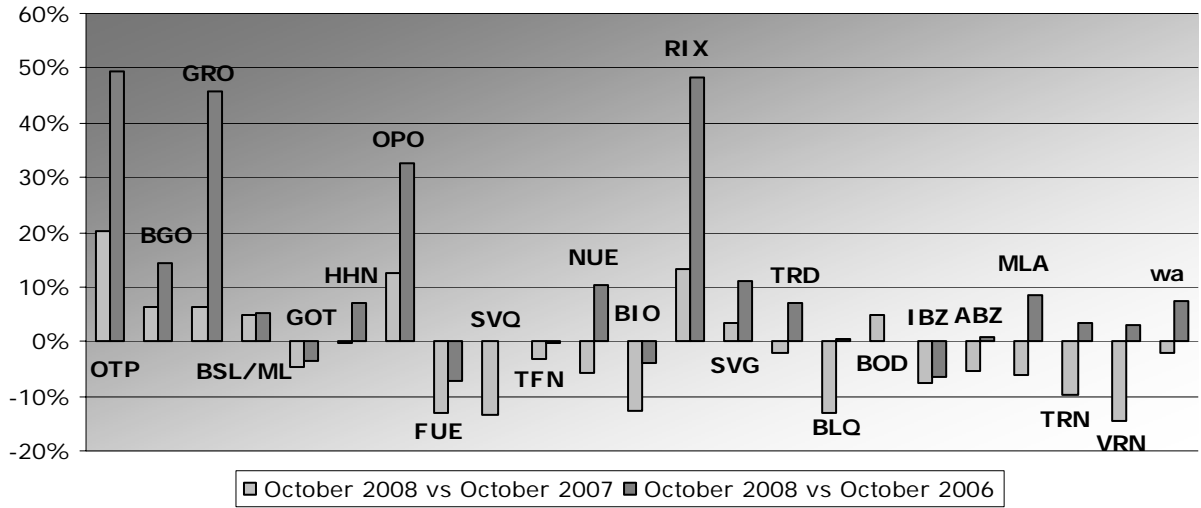
*weighted average=SUM(%change*pax)/SUM(pax)



Group 4
Airports welcoming less than 5 million passengers
per year (percentage traffic variation October 2008 versus 2007 and 2006)

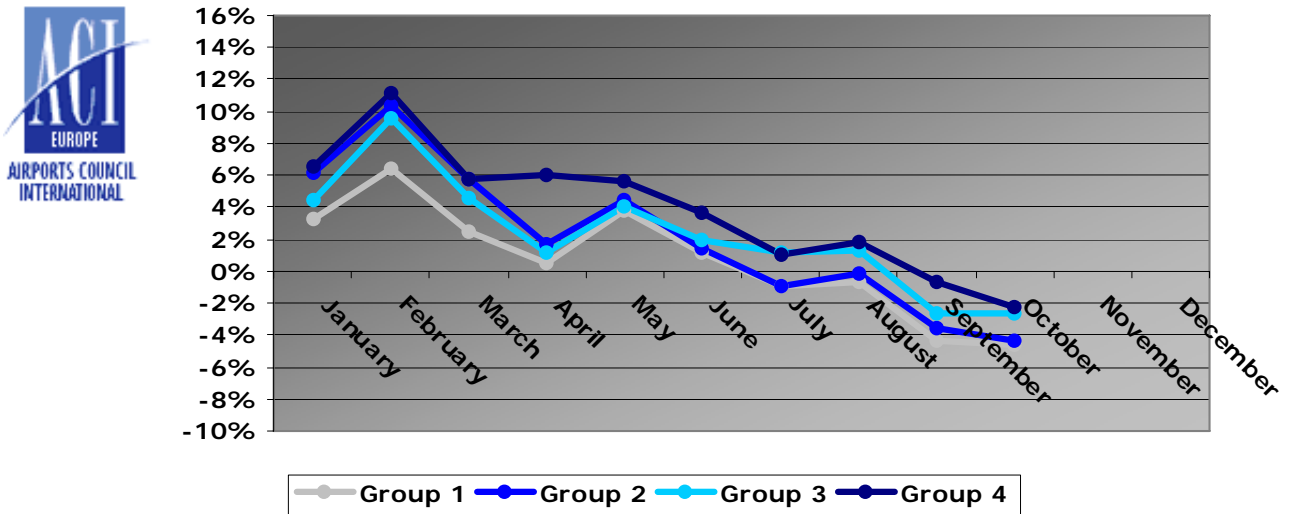
Airport	2008v2007 variation %	2008v2006 variation %
OTP	20.0%	49.6%
BGO	6.3%	14.5%
GRO	6.3%	45.6%
BSL/ML	5.0%	5.1%
GOT	-4.8%	-3.5%
HHN	-0.2%	7.0%
OPO	12.7%	32.7%
FUE	-13.2%	-7.2%
SVQ	-13.5%	0.0%
TFN	-3.2%	-0.4%
NUE	-5.7%	10.5%
BIO	-12.6%	-4.0%
RIX	13.1%	48.5%
SVG	3.3%	11.2%
TRD	-2.1%	7.2%
BLQ	-13.1%	0.6%
BOD	5.0%	N/A
IBZ	-7.6%	-6.4%
ABZ	-5.3%	0.9%
MLA	-6.0%	8.3%
TRN	-9.6%	3.4%
VRN	-14.5%	3.1%
BRI	-3.3%	15.9%
FNC	-5.6%	-4.5%
BMA	-1.9%	6.5%
MAH	-11.3%	-15.8%
FLR	-3.2%	-0.1%
VNO	4.3%	30.8%
MMX	-11.0%	-9.1%
SOU	-7.5%	-2.2%
TLL	1.4%	21.1%
LJU	-1.2%	21.9%
TOS	-0.6%	-0.8%
BOO	-6.8%	1.3%
SXB	-12.5%	-38.3%
DBV	0.0%	-1.8%
BOH	-12.0%	4.2%
KRS	7.4%	10.9%
BDS	4.8%	27.8%
AES	8.5%	13.2%
HAU	5.2%	0.5%
SKP	-1.8%	17.9%
HUY	-12.5%	-23.2%
LGG	13.6%	35.0%
OHD	2.2%	N/A
wa*	-2.2%	+7.4%

*weighted average=SUM(%change*pax)/SUM(pax)



Year-to-date airport passenger trends

The graphic illustrates and compares the trends of the different airport Groups 1, 2, 3 and 4 for 2008.



The graphic compares the amount of total commercial passengers 2008 with 2007. The airports included, in this graphic, are: LHR, FRA, CDG, AMS, MAD, LGW, FCO, MUC, BCN, ORY, STN, MAN, MXP, ZRH, CPH, ARN, DUB, OS L, BRU, VIE, DUS, ATH, PMI, AGP, DME, HEL, TXL, LIS, HAM, PRG.

