



Airport Traffic Report

June 2010

European passenger traffic increases 2.4% during first half of 2010

European aviation continues to make a timid recovery, according to figures released by European airport trade body ACI EUROPE today.

The accumulated figure for **passenger** traffic from **January to June 2010** increased by **+2.4%** compared with the corresponding period 2009. However, comparison with the same period in 2008 revealed a figure of **-8.4%**, an indication of how much growth there is yet to regain. This reflects both the impact of the volcanic ash crisis in April and May, as well as the substantial traffic lost in 2008 and 2009.

Meanwhile, the gap between freight traffic recovery and passenger traffic recovery remains. The accumulated figure for **freight** traffic during **January to June 2010** increased by **+24.7%** while comparison with 2008, revealed a figure of **-4.8%**. Finally, aircraft **movements** decreased by **-1.7%** during the corresponding period when compared with 2009 and **-11.6%** compared with 2008 – a real reflection of how much capacity has been cut by airlines during the crisis.




The overall **passenger** traffic at European airports increased by **+5.6%** in **June 2010** compared with June 2009. The overall **freight** traffic among European airports increased **+24.9%** in June 2010 when compared with the corresponding month in 2009. The overall figure for **movements** at European airports increased **+3.0%** in June 2010 when compared with June 2009.




Airports welcoming more than 25 million passengers per year (Group 1), airports welcoming between 10 and 25 million passengers (Group 2), airports welcoming between 5 and 10 million passengers (Group 3) and airports welcoming less than 5 million passengers per year (Group 4) reported an average increase of **+4.4%**, **+6.1%**, **+6.9%** and **+5.7%** respectively when compared with June 2009. The same comparison of June 2010 with June 2008 demonstrates an average decrease of **-3.2%**, **-3.4%**, **-2.8%** and **-2.4%** respectively.




Examples of airports that experienced the highest increase in passenger traffic per group, when comparing June 2010 with June 2009, include:




- **Group 1 airports** – Munich (**+11.8%**), Rome FCO (**+9.1%**), Frankfurt (**+7.0%**) and Amsterdam-Schiphol (**+6.6%**)
- **Group 2 airports** – Moscow SVO (**+38.0%**), Antalya (**+22.2%**), Moscow DME (**+17.2%**) and Berlin TXL (**+11.7%**)
- **Group 3 airports** – Istanbul SAW (**+93.9%**), Ankara (**+26.4%**), Moscow VKO (**+20.7%**) and Milan BGY (**+12.0%**)
- **Group 4 airports** – Brindisi (**+41.7%**), Charleroi (**+36.8%**), Eindhoven (**+31.2%**), and Riga (**+22.7%**).

The '**ACI EUROPE Airport Traffic Report - June 2010**' includes **128 airports** in total.

Airport	Passengers		Commercial movements		Freight		
		June 2010		June 2010		June 2010	
LONDON	LHR	5795744	0,2%	37989	-3,2%	127574	23,4%
PARIS	CDG	5244612	2,5%	43204	-3,6%	183420	24,8%
FRANKFURT	FRA	4851203	7,0%	40190	2,5%	189971	30,3%
MADRID	MAD	4453977	4,3%	37664	1,6%	29743	28,3%
AMSTERDAM	AMS	4110980	6,6%	34346	0,1%	123899	23,6%
ROME	FCO	3261225	9,1%	28494	2,9%	13380	23,9%
MUNICH	MUC	3214179	11,8%	33351	1,8%	23483	28,8%
LONDON	LGW	3047932	-0,8%	21868	-2,1%	9089	75,8%
ANTALYA	AYT	3006611	22,2%	18664	20,7%	869	93,5%
ISTANBUL	IST	2739020	3,5%	22921	-0,9%	37971	34,0%
BARCELONA	BCN	2629043	5,1%	24503	-0,3%	7967	3,6%
PALMA DE MALLORCA	PMI	2537262	-2,1%	19036	-0,2%	1654	20,1%
PARIS	ORY	2296871	1,7%	19726	1,4%	8220	22,5%
MOSCOW	DME	2111209	17,2%	19017	14,6%	11029	31,7%
COPENHAGEN	CPH	2088862	9,4%	21984	6,2%	N/A	N/A
ZURICH	ZRH	1999903	3,1%	19962	5,0%	23995	24,9%
MOSCOW	SVO	1926892	38,0%	16677	23,6%	10233	30,3%
OSLO	OSL	1868825	5,9%	19357	3,6%	4236	-4,4%
MANCHESTER	MAN	1852103	-0,4%	14582	-3,7%	10140	31,7%
VIENNA	VIE	1822444	10,5%	21917	3,1%	18743	37,2%
DUBLIN	DUB	1821754	-6,3%	14229	-2,4%	7945	7,3%
DÜSSELDORF	DUS	1751117	6,4%	19048	3,0%	8251	58,7%
LONDON	STN	1744545	-5,2%	13049	-6,6%	17667	15,7%
MILAN	MXP	1721494	8,6%	16956	3,0%	34656	28,5%
STOCKHOLM	ARN	1616512	5,1%	16762	2,2%	N/A	N/A
BRUSSELS	BRU	1586502	1,5%	18686	-2,9%	34706	3,4%
ATHENS	ATH	1434194	-9,4%	15743	-10,7%	7729	-0,2%
BERLIN	TXL	1408140	11,7%	14256	7,4%	2028	54,2%
HELSINKI	HEL	1228292	7,3%	15100	3,7%	12720	39,2%
LISBON	LIS	1224903	7,5%	12225	12,4%	8459	33,5%
MALAGA	AGP	1201113	2,1%	9748	3,9%	248	-9,5%
HAMBURG	HAM	1165472	7,5%	12652	6,7%	5818	4,9%
PRAGUE	PRG	1112911	-1,5%	14431	-3,6%	4522	53,0%
ISTANBUL	SAW	1013118	93,9%	8680	92,5%	2190	242,2%
NICE	NCE	978876	-1,4%	11360	-1,1%	1415	54,0%
ALICANTE	ALC	946956	5,8%	7257	6,1%	272	-0,7%
COLOGNE	CGN	946075	2,1%	11475	5,1%	53068	14,5%
GENEVA	GVA	933685	5,2%	10240	3,1%	3454	40,7%
MOSCOW	VKO	916386	20,7%	9684	8,1%	3006	23,8%
STUTTGART	STR	906447	2,0%	10061	-2,7%	1713	23,8%
WARSAW	WAW	883780	4,8%	11503	5,6%	3686	29,2%
BIRMINGHAM	BHX	871560	-3,1%	8560	-3,3%	1873	112,6%
EDINBURGH	EDI	854147	-2,0%	9722	-1,1%	1711	-15,3%
BUDAPEST	BUD	777258	4,6%	9175	-4,0%	5437	36,4%
LYON	LYS	740091	4,3%	10719	-1,1%	2764	7,5%
MILAN	LIN	733081	-4,8%	8034	-0,7%	1477	31,9%
MILAN	BGY	722490	12,0%	5871	7,6%	9084	7,2%
MARSEILLE	MRS	705130	0,5%	8764	2,5%	4638	11,3%
IBIZA	IBZ	687623	6,1%	6301	7,0%	332	0,7%
GLASGOW	GLA	686817	-6,9%	6665	-4,9%	359	19,7%
ANKARA	ESB	682165	26,4%	5355	24,9%	1659	21,5%
GRAN CANARIA	LPA	670172	10,8%	7550	11,7%	1780	3,7%
BERLIN	SXF	663257	9,8%	5757	7,3%	386	27,9%
VENICE	VCE	662538	2,1%	6499	-0,5%	3220	17,7%
FARO	FAO	629408	7,2%	4535	9,0%	37	-47,1%
TOULOUSE	TLS	610651	2,6%	7450	6,7%	4327	-2,4%
CATANIA	CTA	582637	4,6%	5111	2,9%	713	47,0%
NAPLES	NAP	532917	4,0%	5218	0,6%	81	-27,0%
GIRONA	GRO	510953	-2,7%	3577	-2,5%	6	22,1%
BOLOGNA	BLQ	510606	13,4%	5957	9,5%	2345	8,8%
HANOVER	HAJ	494618	1,1%	5654	-2,3%	299	-2,9%
TENERIFE	TFS	492315	8,9%	3419	12,8%	317	-17,8%
RIGA	RIX	473388	22,7%	6231	20,5%	586	47,6%
CHARLEROI	CRL	471537	36,8%	3275	43,3%	N/A	N/A
BERGEN	BGO	468579	4,0%	6547	5,5%	298	23,0%
BUCHAREST	OTP	461328	11,6%	6670	5,8%	1607	1,5%
EAST MIDLANDS	EMA	461141	-2,3%	5581	-2,7%	24211	16,5%
PORTO	OPO	459188	21,2%	4724	14,2%	2314	2,8%

Airport	Passengers		Commercial movements		Freight		
		June 2010		June 2010		June 2010	
VALENCIA	VLC	451352	5,2%	5869	3,3%	1073	28,6%
GOTHENBURG	GOT	405522	13,2%	5602	13,7%	N/A	N/A
PALERMO	PMO	402118	0,0%	4053	-6,9%	79	-12,2%
ROME	CIA	385600	-6,9%	2665	-8,1%	1597	13,1%
LANZAROTE	ACE	384593	12,1%	3656	21,7%	339	-36,5%
BASEL	BSL	383665	2,4%	4894	4,3%	3746	65,1%
BILBAO	BIO	370106	10,3%	4335	4,3%	240	-2,7%
BORDEAUX	BOD	364955	9,5%	4408	2,9%	560	12,1%
SEVILLA	SVQ	358022	3,5%	3687	2,9%	422	-7,7%
TENERIFE	TFN	351360	0,5%	4947	3,3%	1208	-27,4%
CAGLIARI	CAG	341017	1,5%	3185	-3,3%	157	-7,7%
HAHN	HHN	339444	-8,1%	3399	2,1%	13957	75,2%
NUREMBERG	NUE	338797	4,5%	4902	3,0%	699	11,3%
TRONDHEIM	TRD	334513	2,2%	4323	3,4%	156	0,3%
MENORCA	MAH	334016	2,9%	3083	2,5%	253	-0,6%
MALTA	MLA	332501	19,0%	3017	12,2%	1240	-9,6%
STAVANGER	SVG	330084	-0,3%	4432	-4,2%	148	-45,5%
FUERTEVENTURA	FUE	328125	17,8%	3006	15,4%	132	-5,7%
BARI	BRI	307165	15,0%	2925	9,1%	22	3,8%
TURIN	TRN	307028	15,6%	3896	5,6%	81	-6,9%
SOFIA	SOF	292618	9,0%	3549	1,0%	1164	11,3%
KATOWICE	KTW	266815	8,7%	2525	13,3%	805	64,1%
ABERDEEN	ABZ	261544	-4,0%	8310	-2,6%	424	-1,2%
BELGRADE	BEG	258424	9,6%	3653	5,9%	668	45,2%
BILLUND	BLL	255298	16,7%	3700	21,9%	5462	53,3%
KEFLAVIK	KEF	216217	11,5%	2496	11,2%	2872	0,2%
OLBIA	OLB	215191	-1,5%	2050	-1,7%	26	29,2%
REUS	REU	205084	-10,9%	1384	-7,7%	4	76,7%
ZAGREB	ZAG	201096	1,5%	3228	5,2%	646	-21,2%
BUCHAREST	BBU	199293	10,4%	2500	0,4%	N/A	N/A
VARNA	VAR	199184	-3,3%	1730	-2,8%	9	-39,0%
EINDHOVEN	EIN	198368	31,2%	1502	31,0%	N/A	N/A
FUNCHAL	FNC	181987	-10,8%	1933	3,7%	519	-1,0%
STOCKHOLM	BMA	180489	1,5%	3539	0,3%	N/A	N/A
SOUTHAMPTON	SOU	178931	3,7%	4005	7,2%	2	-87,9%
DUBROVNIK	DBV	170127	12,3%	1576	9,9%	35	-26,5%
TROMSOE	TOS	161748	-0,3%	2845	7,8%	182	-1,8%
FLORENCE	FLR	161745	4,7%	2224	1,7%	20	-29,5%
BODO	BOO	159107	3,8%	3279	1,9%	103	3,9%
SPLIT	SPU	157033	3,9%	1686	122,4%	68	-1,6%
MALMO	MMX	157005	7,7%	2051	2,7%	N/A	N/A
BRINDISI	BDS	151966	41,7%	1226	28,2%	4	46,5%
VILNIUS	VNO	151501	18,3%	2310	26,2%	297	35,6%
LUXEMBOURG	LUX	147927	1,6%	4172	2,5%	58110	21,1%
LJUBLJANA	LJU	143540	-3,2%	2806	-9,0%	610	16,2%
SHANNON	SNN	143515	-43,0%	1720	-36,7%	1682	13,3%
TALLINN	TLL	139294	9,5%	2462	15,3%	612	-56,7%
SALZBURG	SZG	127346	9,5%	1649	11,5%	11	-14,9%
PRISTINA	PRN	111785	14,8%	535	12,9%	69	-36,5%
STRASBOURG	SXB	103488	-5,1%	2424	-5,3%	22	4,8%
BOURNEMOUTH	BOH	86327	-1,9%	905	6,0%	N/A	N/A
AALESUND	AES	84052	13,0%	980	9,1%	46	-35,5%
LINZ	LNZ	78874	4,6%	1433	14,8%	528	15,7%
UMEÅ	UME	75063	4,2%	1144	10,6%	N/A	N/A
KRISTIANSAND	KRS	67839	-16,4%	1380	-19,9%	22	-44,8%
TRIESTE	TRS	67065	1,9%	775	-11,3%	10	42,9%
SARAJEVO	SJJ	59636	3,6%	503	-1,9%	133	-14,7%
TOULON	TLN	50123	-15,3%	979	6,9%	N/A	N/A
HAUGESUND	HAU	47818	0,2%	552	5,7%	25	-12,7%
LIEGE	LGG	29896	-19,2%	2573	15,6%	52421	43,9%

Airport		Passengers		Commercial movements		Freight	
		 January - June 2010		 January - June 2010		 January - June 2010	
London	LHR	30207069	-3,5%	215538	-6,2%	716936	22,9%
Paris	CDG	27137438	-1,9%	238159	-8,1%	N/A	N/A
Frankfurt	FRA	24492562	1,4%	218190	-2,1%	1071502	32,2%
Madrid	MAD	23635045	3,2%	213515	-0,3%	179443	33,1%
Amsterdam	AMS	20501731	1,1%	182601	-4,8%	716114	21,6%
Rome	FCO	16656172	5,8%	155397	-1,5%	75145	31,8%
Munich	MUC	15818290	2,7%	175089	-6,6%	126925	27,1%
Istanbul	IST	14966894	9,9%	130299	4,1%	220681	38,3%
London	LGW	14164653	-4,3%	110368	-5,1%	51418	51,3%
Barcelona	BCN	13151594	3,0%	130414	-5,4%	53086	32,1%
Paris	ORY	11958264	-2,5%	105786	-4,3%	N/A	N/A
Zurich	ZRH	10482670	3,0%	108908	0,5%	141235	21,0%
Copenhagen	CPH	9884142	5,8%	115606	1,3%	N/A	N/A
Moscow	DME	9764484	26,6%	95861	18,6%	60811	32,8%
Vienna	VIE	8899184	5,5%	118168	0,0%	112644	38,4%
Oslo	OSL	8832577	1,8%	102381	-1,9%	23285	-10,3%
Milan	MPX	8749730	5,9%	90425	0,9%	201605	34,4%
Palma De Mallorca	PMI	8650402	-4,5%	76653	-3,5%	8370	3,2%
London	STN	8525830	-7,7%	69221	-7,6%	98050	14,4%
Moscow	SVO	8498662	32,3%	83023	13,5%	58177	32,0%
Düsseldorf	DUS	8434679	4,0%	97265	-0,9%	40882	50,1%
Antalya	AYT	8433069	24,8%	57549	23,8%	4969	102,6%
Stockholm	ARN	7883892	-0,9%	89662	-5,9%	25887	20,2%
Manchester	MAN	7875787	-10,5%	69135	-14,3%	54315	17,3%
Brussels	BRU	7711697	-2,6%	98410	-7,2%	215902	5,2%
Athens	ATH	7203324	0,1%	88008	-3,0%	43114	-5,0%
Berlin	TXL	6812666	1,4%	73061	-1,1%	9818	31,7%
Lisbon	LIS	6300934	3,8%	65261	2,7%	46100	22,1%
Helsinki	HEL	6148984	-1,4%	83008	-4,6%	65325	29,8%
Hamburg	HAM	5931357	3,3%	66546	0,4%	35330	14,5%
Geneva	GVA	5917108	3,4%	62901	-2,8%	17978	35,2%
Malaga	AGP	5162431	-2,8%	45374	-2,1%	1429	-15,5%
Prague	PRG	5120592	-0,3%	73116	-5,7%	23228	41,7%
Istanbul	SAW	5007010	94,8%	43292	95,3%	9282	72,1%
Gran Canaria	LPA	4666634	2,4%	48936	2,6%	11880	-4,0%
Cologne	CGN	4448794	0,1%	57711	-0,2%	290219	11,5%
Nice	NCE	4347076	-4,9%	54494	-4,1%	7481	48,2%
Moscow	VKO	4209685	28,1%	49141	12,2%	16942	42,9%
Alicante	ALC	4177026	3,4%	34357	3,3%	1550	3,3%
Stuttgart	STR	4048542	-2,1%	50868	-7,7%	9999	29,7%
Birmingham	BHX	3933322	-7,9%	41879	-11,1%	10238	108,4%
Warsaw	WAW	3920354	3,0%	58507	0,1%	18889	21,8%
Edinburgh	EDI	3888206	-8,7%	48367	-9,0%	11404	-6,5%
Milan	LIN	3805913	-6,0%	45133	-6,1%	7453	5,7%
Lyon	LYS	3746031	-0,3%	57546	-5,0%	16270	21,2%
Budapest	BUD	3570100	-0,1%	46920	-7,2%	28756	28,0%
Milan	BGY	3539503	7,9%	30732	3,9%	51077	5,2%
Tenerife	TFS	3528635	0,3%	24365	4,1%	2129	-25,0%
Berlin	SXF	3307884	7,3%	30014	5,5%	2358	29,0%
Venice	VCE	3105625	1,0%	32271	-4,6%	18203	27,8%
Glasgow	GLA	2922110	-12,6%	32489	-11,4%	2036	77,5%
Naples	NAP	2497043	3,4%	26426	-2,5%	501	-1,4%
Bologna	BLQ	2459862	14,9%	30643	7,7%	13016	8,3%
Porto	OPO	2319095	14,1%	25773	2,1%	14928	13,8%
Girona	GRO	2302589	-4,7%	17801	-3,7%	21	17,0%
Lanzarote	ACE	2297962	4,7%	21212	8,6%	1863	-14,3%
Charleroi	CRL	2281330	32,7%	16578	42,0%	N/A	N/A
Valencia	VLC	2255977	3,0%	30885	-4,7%	5696	21,9%
Bergen	BGO	2254216	-0,7%	34292	-0,8%	1254	-0,6%
Hanover	HAJ	2205080	-4,6%	26698	-10,7%	2486	38,8%
Rome	CIA	2128452	-6,5%	15684	-6,9%	8584	4,6%
Faro	FAO	2117499	-0,6%	16753	2,1%	141	-66,6%
Riga	RIX	2094627	15,1%	30693	11,4%	2995	27,4%
Sevilla	SVQ	2002786	4,2%	21198	-0,4%	2900	8,9%
Tenerife	TFN	1943773	1,0%	28287	0,5%	7720	-10,7%
Gothenburg	GOT	1900144	5,2%	27869	1,9%	14778	10,7%
Fuerteventura	FUE	1869675	5,9%	17615	4,8%	840	-13,4%
Bilbao	BIO	1835891	8,2%	23608	3,0%	1247	-7,6%

Airport		Passengers		Commercial movements		Freight	
		 January - June 2010	January - June 2010	 January - June 2010	January - June 2010	 January - June 2010	January - June 2010
East Midlands	EMA	1813462	-17,6%	27115	-13,1%	129704	4,9%
Basel	BSL	1781829	-0,2%	25473	0,8%	20099	38,9%
Turin	TRN	1744510	7,1%	21488	-9,6%	575	-16,4%
Bordeaux	BOD	1694181	5,4%	22679	-2,3%	3343	9,6%
Trondheim	TRD	1671173	-1,0%	23291	-1,4%	807	-14,3%
Ibiza	IBZ	1661444	6,9%	18986	4,0%	1309	-3,8%
Stavanger	SVG	1635401	-3,0%	23764	-8,0%	1314	-9,6%
Hahn	HHN	1601046	-7,6%	17115	-4,3%	66831	70,6%
Sofia	SOF	1551682	1,3%	19554	-2,7%	6226	-7,2%
Bari	BRI	1527430	18,4%	15419	8,2%	104	-32,5%
Cagliari	CAG	1525944	4,9%	15554	-2,1%	897	-8,1%
Malta	MLA	1386040	10,3%	13353	6,0%	7730	3,1%
Aberdeen	ABZ	1285984	-10,4%	43480	-8,8%	2377	-8,8%
Funchal	FNC	1035914	-10,1%	10821	-0,6%	3066	-1,8%
Stockholm	BMA	1026392	2,5%	20347	2,5%	79	25,4%
Menorca	MAH	852903	-0,4%	10672	-3,6%	1071	-10,0%
Southampton	SOU	812307	-2,8%	19260	-2,0%	27	-70,2%
Florence	FLR	803252	0,3%	11698	-3,5%	88	-18,9%
Tromsø	TOS	788438	-1,0%	14839	0,8%	1005	-6,5%
Malmö	MMX	775844	1,5%	10927	-0,4%	9394	18,4%
Bodo	BOO	764922	0,8%	17428	-0,6%	543	-14,1%
Luxembourg	LUX	719624	1,5%	22839	-0,9%	346393	15,7%
Vilnius	VNO	678713	13,3%	12584	27,1%	1671	32,4%
Brindisi	BDS	658686	40,4%	5775	18,3%	93	181,4%
Tallinn	TLL	637968	-2,5%	12724	0,6%	5952	-35,6%
Ljubljana	LJU	555199	-8,9%	13287	-14,8%	3080	4,1%
Reus	REU	548865	-21,2%	4201	-24,2%	N/A	N/A
Strasbourg	SXB	498571	-8,6%	12564	-12,3%	127	-11,8%
Dubrovnik	DBV	436629	5,7%	4700	7,5%	177	-22,6%
Kristiansand	KRS	388367	-8,4%	8712	-12,4%	165	-21,3%
Aalesund	AES	387803	2,0%	5125	0,1%	257	-39,9%
Haugesund	HAU	257430	9,0%	3314	15,1%	129	-23,6%
Liege	LGG	113583	-12,2%	14018	15,1%	323076	51,2%

----- Preliminary traffic figures -----

Total commercial passengers

International passengers (enplaned + deplaned) + **domestic passengers** (enplaned + deplaned) + **direct transit passengers** (passengers who arrive at and depart from the airport on a flight bearing the same number. They are counted only ONCE).

Commercial movements

Landing or take off of an aircraft operating a scheduled or non scheduled commercial service.

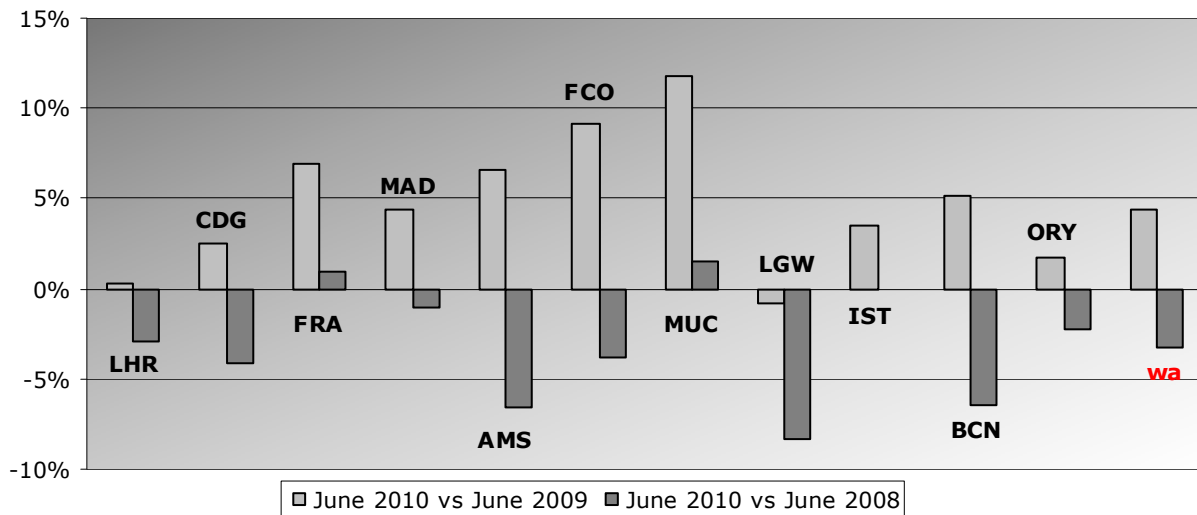
Freight

Freight loaded and unloaded (arriving or departing) at the airport. Freight comprises goods, newspapers, diplomatic bags, parcel post and express parcel.

Group 1
Airports welcoming more than 25 million passengers per year
(percentage traffic variation June 2010 versus 2009 and 2008)

Airport	2010v2009 variation %	2010v2008 variation %
LHR	0,2%	-2,9%
CDG	2,5%	-4,2%
FRA	7,0%	0,9%
MAD	4,3%	-1,0%
AMS	6,6%	-6,6%
FCO	9,1%	-3,8%
MUC	11,8%	1,5%
LGW	-0,8%	-8,3%
IST	3,5%	N/A
BCN	5,1%	-6,5%
ORY	1,7%	-2,2%
wa*	4,4%	-3,2%

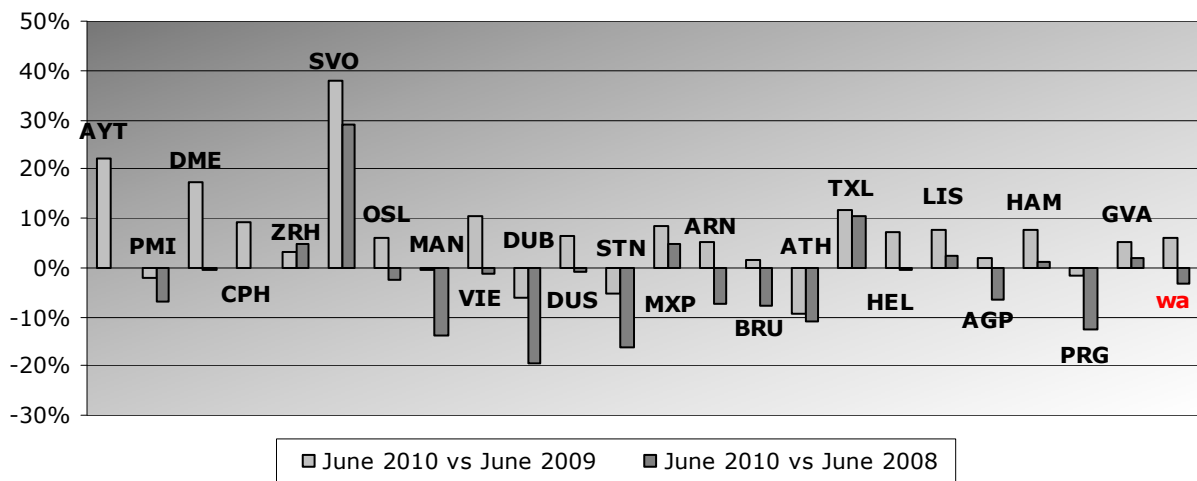
*weighted average=SUM(%change*pax)/SUM(pax)



Group 2
Airports welcoming between 10 and 25 million passengers
per year (percentage traffic variation June 2010 versus 2009 and 2008)

Airport	2010v2009 variation %	2010v2008 variation %
AYT	22,2%	N/A
PMI	-2,1%	-6,8%
DME	17,2%	-0,6%
CPH	9,4%	-0,2%
ZRH	3,1%	4,9%
SVO	38,0%	28,9%
OSL	5,9%	-2,5%
MAN	-0,4%	-14,0%
VIE	10,5%	-1,2%
DUB	-6,3%	-19,4%
DUS	6,4%	-1,0%
STN	-5,2%	-16,1%
MXP	8,6%	4,6%
ARN	5,1%	-7,4%
BRU	1,5%	-7,7%
ATH	-9,4%	-11,0%
TXL	11,7%	10,3%
HEL	7,3%	-0,4%
LIS	7,5%	2,5%
AGP	2,1%	-6,8%
HAM	7,5%	1,1%
PRG	-1,5%	-12,6%
GVA	5,2%	1,8%
wa*	6,1%	-3,4%

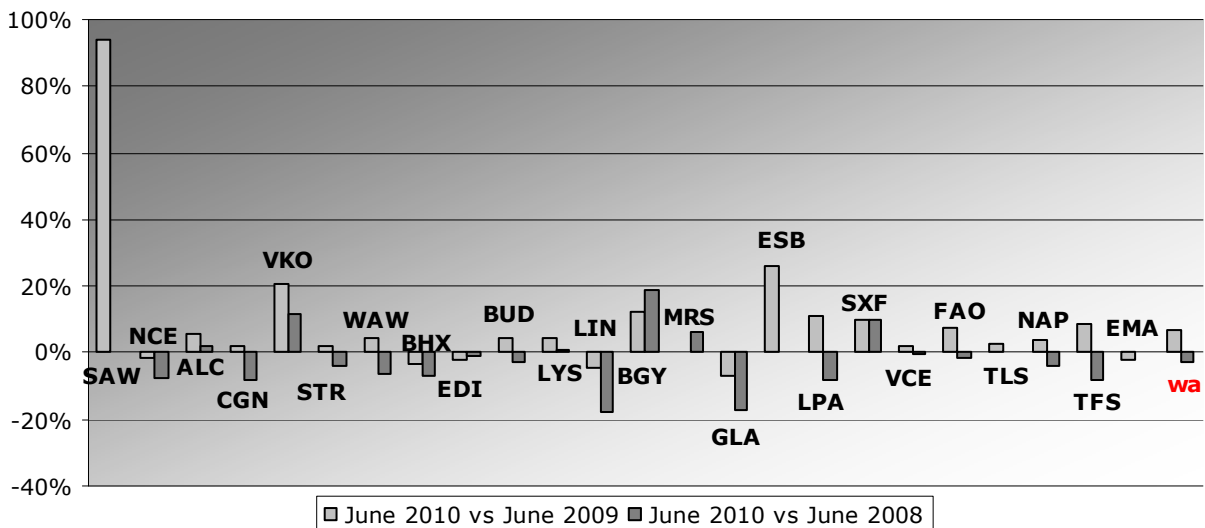
*weighted average=SUM(%change*pax)/SUM(pax)



Group 3
Airports welcoming between 5 and 10 million passengers
per year (percentage traffic variation June 2010 versus 2009 and 2008)

Airport	2010v2009 variation %	2010v2008 variation %
SAW	93,9%	N/A
NCE	-1,4%	-7,7%
ALC	5,8%	1,9%
CGN	2,1%	-8,1%
VKO	20,7%	11,6%
STR	2,0%	-3,8%
WAW	4,8%	-6,1%
BHX	-3,1%	-7,0%
EDI	-2,0%	-0,7%
BUD	4,6%	-2,7%
LYS	4,3%	0,8%
LIN	-4,8%	-18,0%
BGY	12,0%	19,0%
MRS	0,5%	6,0%
GLA	-6,9%	-17,2%
ESB	26,4%	N/A
LPA	10,8%	-8,4%
SXF	9,8%	9,8%
VCE	2,1%	-0,5%
FAO	7,2%	-1,3%
TLS	2,6%	0,3%
NAP	4,0%	-3,9%
TFS	8,9%	-8,2%
EMA	-2,3%	N/A
wa*	6,9%	-2,8%

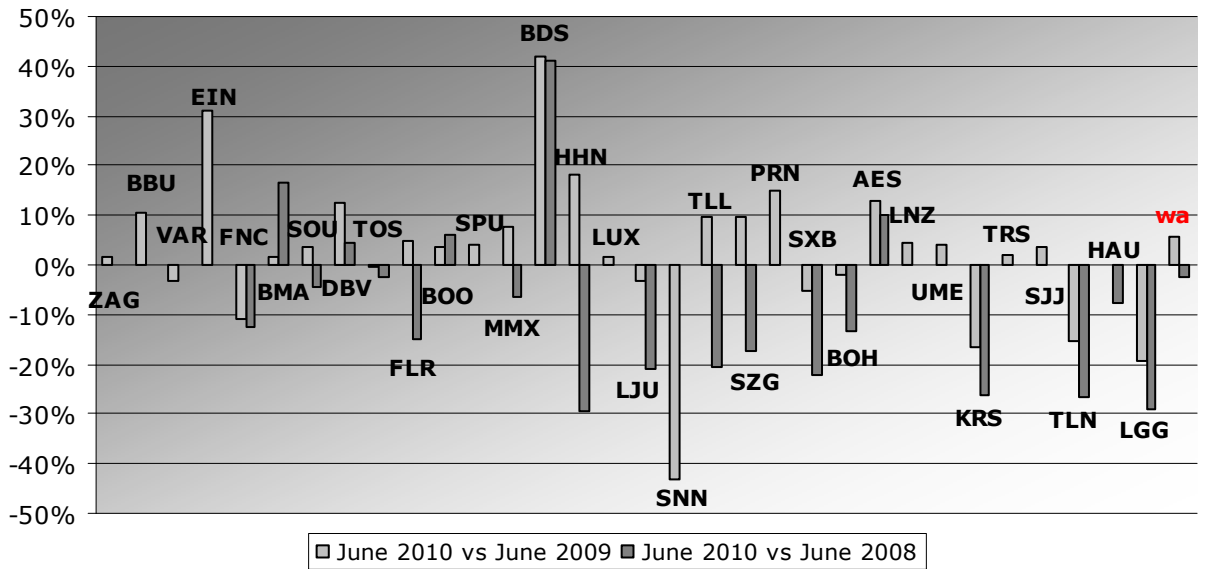
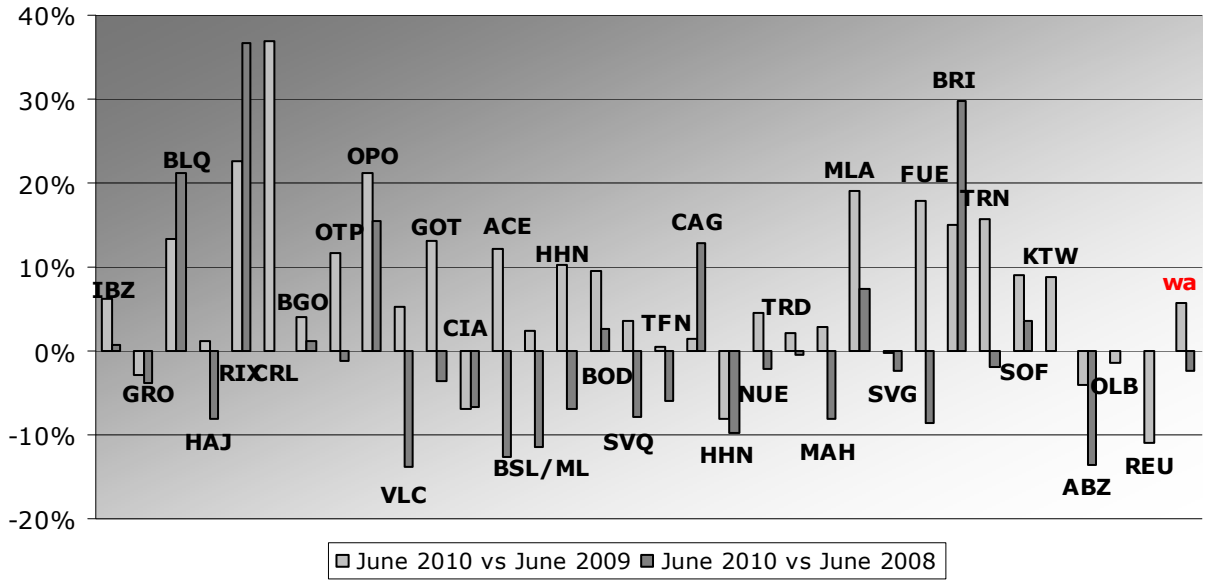
*weighted average=SUM(%change*pax)/SUM(pax)



Group 4
Airports welcoming less than 5 million passengers
per year (percentage traffic variation June 2010 versus 2009 and 2008)

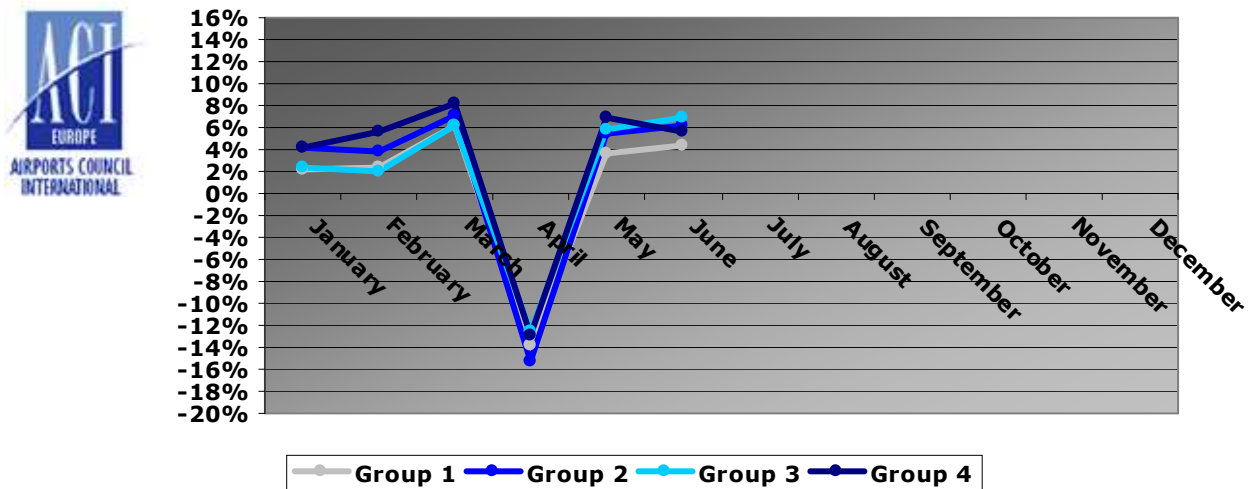
Airport	2010v2009 variation %	2010v2008 variation %
IBZ	6,1%	0,6%
GRO	-2,7%	-3,8%
BLQ	13,4%	21,1%
HAJ	1,1%	-8,1%
RIX	22,7%	36,8%
CRL	36,8%	N/A
BGO	4,0%	1,1%
OTP	11,6%	-1,2%
OPO	21,2%	15,6%
VLC	5,2%	-13,7%
GOT	13,2%	-3,5%
CIA	-6,9%	-6,7%
ACE	12,1%	-12,7%
BSL/ML	2,4%	-11,3%
BIO	10,3%	-7,0%
BOD	9,5%	2,6%
SVQ	3,5%	-7,9%
TFN	0,5%	-5,9%
CAG	1,5%	12,9%
HHN	-8,1%	-9,7%
NUE	4,5%	-2,1%
TRD	2,2%	-0,5%
MAH	2,9%	-8,2%
MLA	19,0%	7,3%
SVG	-0,3%	-2,5%
FUE	17,8%	-8,5%
BRI	15,0%	29,7%
TRN	15,6%	-2,0%
SOF	9,0%	3,6%
KTW	8,7%	N/A
ABZ	-4,0%	-13,5%
OLB	-1,5%	N/A
REU	-10,9%	N/A
ZAG	1,5%	N/A
BBU	10,4%	N/A
VAR	-3,3%	N/A
EIN	31,2%	N/A
FNC	-10,8%	-12,4%
BMA	1,5%	16,5%
SOU	3,7%	-4,5%
DBV	12,3%	4,2%
TOS	-0,3%	-2,3%
FLR	4,7%	-14,9%
BOO	3,8%	6,1%
SPU	3,9%	N/A
MMX	7,7%	-6,4%
BDS	41,7%	41,3%
VNO	18,3%	-29,3%
LUX	1,6%	N/A
LJU	-3,2%	-20,9%
SNN	-43,0%	N/A
TLL	9,5%	-20,5%
SZG	9,5%	-17,4%
PRN	14,8%	N/A
SXB	-5,1%	-22,4%
BOH	-1,9%	-13,4%
AES	13,0%	10,0%
LNZ	4,6%	N/A
UME	4,2%	N/A
KRS	-16,4%	-26,2%
TRS	1,9%	N/A
SJJ	3,6%	N/A
TLN	-15,3%	-26,5%
HAU	0,2%	-7,6%
LGG	-19,2%	-28,9%
wa*	7,0%	-2,0%

*weighted average=SUM(%change*pax)/SUM(pax)



Year-to-date airport passenger trends

The graphic illustrates and compares the trends of the different airport Groups 1, 2, 3 and 4 for 2010.



The graphic compares the amount of total commercial passengers 2010 with 2009. The airports included, in this graphic, are: LHR, FRA, CDG, AMS, MAD, IST, LGW, FCO, MUC, BCN, ORY, STN, MAN, MXP, ZRH, CPH, ARN, DUB, OSL, BRU, VIE, DUS, ATH, PMI, AGP, DME, HEL, TXL, LIS, HAM, PRG.

