



Airport Traffic Report

August 2008

European passenger traffic up 0.1% during August 2008

The 'ACI EUROPE Airport Traffic Report - August 2008' includes **108 airports** in total.

The overall **passenger** traffic at European airports increased by **0.1%** in **August 2008** compared with August 2007. The overall **freight** traffic among European airports decreased **-3.5%** in August 2008 when compared with the corresponding month in 2007. The overall figure for **movements** at European airports decreased **-1.2%** in August 2008 when compared with August 2007.

Passenger figures for August 2008 indicate that Group 4 airports (airports welcoming less than 5 million passengers per year) had the largest increase in traffic - with an average increase of **+1.9%** when compared with August 2007 - and an average increase of **+12.9%** when compared with August 2006.

Airports welcoming more than 25 million passengers per year (Group 1), airports welcoming between 10 and 25 million passengers (Group 2) and airports welcoming between 5 and 10 million passengers (Group 3) reported an average increase / decrease of **-0.7%**, **-0.1%** and **+1.3%** respectively when compared with August 2007. The same comparison of August 2008 with August 2006 demonstrates an average increase of **+7.1%**, **+8.4%** and **+8.3%** respectively.

Examples of airports that experienced the highest increase in passenger traffic per group, when comparing August 2008 with August 2007, include:

- **Group 1 airports** – Rome Fiumicino (**+12.5%**), Paris Charles de Gaulle (**1.9%**) and Paris Orly (**1.0%**);
- **Group 2 airports** – Moscow- Domodedovo (**+9.0%**), Geneva (**+7.5%**), Zurich (**+7.4%**) and Prague (**+4.8%**);
- **Group 3 airports** – Lyon (**+14.8%**), St Petersburg (**+12.2%**), Milan/Orio al Serio (**+12.1%**) and Moscow Vnukovo (**+10.3%**);
- **Group 4 airports** – Liege (**+42.1%**), Vilnius (**+24.7%**), Sofia (**+22.2%**) and Riga (**+19.5%**).

Airports		Passengers				Commercial movements		Freight (metric tonnes)	
		August 2008	2008v 2007 variation %	January – August	2008v 2007 variation %	August 2008	2008v 2007 variation %	August 2008	2008v 2007 variation %
1	London Heathrow (LHR)	6,381,900	-0.3%	45,348,800	-0.4%	40,858	-1.6%	120,285	9.8%
2	Paris Roissy (CDG)	5,979,700	1.9%	41,536,400	3.0%	48,995	0.8%	166,550	4.3%
3	Frankfurt (FRA)	4,916,200	-3.9%	36,245,500	0.7%	40,903	-3.0%	163,131	-5.1%
4	Madrid (MAD)	4,763,600	-2.7%	35,370,300	2.7%	38,212	-4.8%	24,588	5.1%
5	Amsterdam (AMS)	4,717,700	-2.2%	32,405,300	0.8%	39,114	-2.5%	127,823	-1.7%
6	London Gatwick (LGW)	3,926,800	-1.1%	24,050,400	0.8%	25,927	1.0%	7,753	-42.3%
7	Rome-Fiumicino (FCO)	3,655,100	12.5%	24,184,300	10.9%	31,148	7.1%	11,824	17.9%
8	Palma de Mallorca (PMI)	3,335,100	1.6%	16,299,300	0.4%	24,616	1.3%	1,850	-14.6%
9	Munich (MUC)	3,131,100	-1.3%	23,310,200	4.1%	34,523	-2.5%	19,544	-4.7%
10	Barcelona (BCN)	3,121,600	-8.6%	21,271,800	-3.9%	27,646	-10.6%	8,267	21.0%
11	Dublin (DUB)	2,474,000	2.1%	16,303,500	3.8%	18,497	1.8%	N/A	N/A
12	Paris Orly (ORY)	2,443,100	1.0%	18,045,400	0.3%	18,791	-0.9%	7,850	14.8%
13	Moscow-Domodedovo (DME)	2,434,200	9.0%	14,390,000	17.5%	20,131	9.7%	11,960	11.2%
14	London Stansted (STN)	2,415,000	-4.6%	15,523,600	-4.8%	16,657	-8.0%	15,989	-13.0%
15	Manchester (MAN)	2,408,500	-4.8%	14,859,000	-2.1%	18,365	-9.3%	11,190	-19.7%
16	Zurich (ZRH)	2,118,400	7.4%	14,839,100	8.7%	20,658	3.2%	22,481	6.1%
17	Copenhagen (CPH)	2,010,200	-0.3%	14,889,100	3.8%	23,147	1.3%	N/A	N/A
18	Milan-Malpensa (MXP)	2,003,200	-20.1%	13,650,500	-15.1%	18,999	-22.5%	25,478	-21.2
19	Vienna (VIE)	1,891,300	4.2%	13,476,000	10.2%	23,163	2.8%	15,385	1.0%
20	Athens (ATH)	1,877,800	-0.8%	11,254,900	0.8%	17,660	-4.9%	8,686	0.4%
21	Brussels (BRU)	1,826,100	1.6%	12,778,300	8.0%	19,334	-8.0%	42,835	-26.8%
22	Düsseldorf (DUS)	1,720,100	0.1%	12,191,500	3.8%	19,070	1.9%	7,986	53.9%
23	Oslo (OSL)	1,718,900	-2.6%	13,216,400	4.8%	20,354	2.6%	4,893	-9.0%
24	Stockholm-Arlanda (ARN)	1,587,400	0.8%	12,390,200	4.9%	17,360	3.0%	7,999	-6.1%
25	Lisbon (LIS)	1,513,800	1.7%	9,311,400	3.7%	13,301	2.4%	6,808	11.1%
26	Malaga (AGP)	1,511,500	-2.3%	9,045,400	-2.4%	12,377	-4.3%	462	-14.0%

Airports		Passengers				Commercial movements		Freight (metric tones)	
		August 2008	2008v 2007 variation %	January – August	2008v 2007 variation %	August 2008	2008v 2007 variation %	August 2008	2008v 2007 variation %
27	Helsinki (HEL)	1,445,900	0.8%	9,734,900	2.2%	15,037	2.0%	12,129	3.4%
28	Prague (PRG)	1,402,300	4.8%	8,687,600	5.8%	16,605	4.8%	3,201	-19.5%
29	Berlin (TXL)	1,249,500	3.8%	9,565,000	12.8%	12,803	4.1%	1,372	6.1%
30	Hamburg (HAM)	1,164,700	-2.1%	8,862,500	3.9%	N/A	N/A	2,706	-17.9%
31	Nice (NCE)	1,153,100	1.1%	7,280,300	1.6%	14,075	0.7%	578	-7.1%
32	Birmingham (BHX)	1,080,300	7.4%	6,586,000	6.0%	9,832	1.8%	958	-25.3%
33	Alicante (ALC)	1,073,600	4.2%	6,683,800	9.1%	8,195	1.7%	2,083	568.5%
34	Cologne/Bonn (CGN)	1,046,600	2.9%	7,012,400	0.9%	11,704	-7.1%	42,614	-28.3%
35	Geneva (GVA)	1,015,000	7.5%	8,106,500	8.5%	10,983	2.3%	2,488	10.9%
36	Stuttgart (STR)	1,012,900	-4.6%	6,712,100	-2.1%	11,090	-3.9%	1,840	10.6%
37	Warsaw (WAW)	983,600	1.9%	6,550,000	6.9%	12,125	-1.1%	2,878	-11.0%
38	Ibiza (IBZ)	967,600	0.9%	3,449,600	-0.5%	9,381	-4.4%	513	-7.1%
39	Budapest (BUD)	940,900	-3.6%	5,760,900	0.0%	10,567	-6.9%	4,810	-8.2%
40	Moscow-Vnukovo (VKO)	909,400	10.3%	5,448,700	24.7%	13,499	11.3%	2,019	10.9%
41	Edinburgh (EDI)	886,800	-1.0%	6,143,500	1.4%	10,163	-1.8%	524	-69.4%
42	Gran Canaria (LPA)	869,300	2.2%	6,862,900	1.6%	9,343	2.8%	2,422	-10.5%
43	St Petersburg (LED)	868,900	12.2%	4,932,400	21.2%	9,616	4.3%	1,663	-2.5%
44	Glasgow (GLA)	827,400	-5.3%	5,622,300	-4.6%	7,959	-8.0%	395	3.4%
45	Lyon (LYS)	755,600	14.8%	5,423,500	9.8%	10,167	1.9%	1,823	-14.0%
46	Faro (FAO)	748,600	1.5%	3,860,000	0.5%	5,054	-0.3%	58	-27.5%
47	Milan Linate (LIN)	735,900	-8.4%	6,504,700	-2.0%	7,233	-5.6%	907	-10.9%
48	Tenerife Sur (TFS)	739,100	-7.0%	5,664,200	-0.2%	5,039	-7.1%	702	-12.9%
49	Venice (VCE)	725,800	-2.8%	4,750,100	0.0%	7,011	-8.9%	2,233	28.2%
50	Marseille (MRS)	710,300	0.8%	4,755,000	1.0%	8,416	-0.4%	3,077	0.5%
51	Berlin (SXF)	687,000	8.1%	4,381,900	2.8%	5,274	4.2%	273	-24.9%
52	Milan/Orio al Serio (BGY)	672,900	12.1%	4,444,100	14.3%	5,475	3.5%	7,039	-14.5%
53	Valencia (VLC)	644,200	1.9%	4,136,600	4.1%	7,128	1.8%	701	-12.1%

Airports		Passengers				Commercial movements		Freight (metric tonnes)	
		August 2008	2008v 2007 variation %	January – August	2008v 2007 variation %	August 2008	2008v 2007 variation %	August 2008	2008v 2007 variation %
54	Naples (NAP)	641,500	-0.5%	3,953,700	3.1%	6,013	-3.5%	76	-31.4%
55	Nottingham East Midlands (EMA)	630,100	5.1%	3,964,000	8.4%	6,426	6.3%	19,585	-9.3%
56	Girona (GRO)	599,600	9.0%	3,839,800	20.5%	3,984	6.2%	N/A	N/A
57	Lanzarote (ACE)	572,500	-4.8%	3,797,900	1.3%	5,069	0.0%	462	-5.3%
58	Liverpool (LPL)	569,800	-0.9%	3,254,500	0.0%	4,121	-1.9%	373	33.2%
59	Hanover (HAJ)	563,700	-2.3%	3,798,900	1.8%	6,243	-3.1%	852	12.1%
60	Porto (OPO)	528,100	10.9%	3,123,200	17.2%	5,339	11.2%	3,154	28.5%
61	Bucharest (OTP)	524,100	-11.3%	N/A	N/A	6,227	-9.6%	1,853	68.5%
62	Menorca (MAH)	516,500	-2.4%	1,931,900	-4.4%	4,851	-4.7%	387	-16.1%
63	Toulouse (TLS)	486,500	2.1%	N/A	N/A	5,926	1.1%	3,523	3.6%
64	Fuerteventura (FUE)	480,200	-1.5%	3,066,000	0.0%	4,287	0.8%	235	-13.0%
65	Verona (VRN)	454,200	-4.3%	2,503,600	1.4%	3,907	-9.0%	537	-27.8%
66	Bergen (BGO)	451,500	7.7%	3,185,200	5.0%	6,466	1.2%	267	9.5%
67	Rome-Ciampino(CIA)	449,500	-9.6%	3,231,300	-12.5%	2,998	-14.1%	1,258	-19.5%
68	Basel-Mulhouse (BSL/ML)	444,900	7.2%	2,935,700	2.8%	4,791	-2.2%	2,930	-9.2%
69	Hahn (HHN)	422,400	2.0%	2,672,600	-3.2%	3,777	10.0%	9,773	11.9%
70	Sevilla (SVQ)	421,300	-7.0%	3,094,100	3.2%	4,002	-8.8%	423	-13.1%
71	Tenerife Norte (TFN)	418,100	10.1%	2,881,200	4.6%	5,801	10.0%	1,472	-26.3%
72	Riga (RIX)	393,100	19.5%	2,443,000	18.5%	5,228	21.3%	433	-13.2%
73	Malta (MLA)	391,400	0.6%	N/A	N/A	3,053	-3.7%	1,260	-0.9%
74	Bilbao (BIO)	386,500	-5.4%	2,911,600	2.9%	4,230	-7.9%	203	-1.1%
75	Nuremberg (NUE)	380,100	-4.6%	2,858,700	2.5%	4,918	-10.0%	683	-21.6%
76	Goteborg (GOT)	372,300	-3.2%	2,934,900	2.3%	5,233	-1.1%	3,767	-13.6%
77	Sofia (SOF)	333,200	22.2%	2,168,900	19.4%	3,991	16.5%	1,225	4.5%
78	Bordeaux (BOD)	330,000	6.4%	2,437,000	4.5%	4,266	3.7%	435	-17.0%
79	Stavanger (SVG)	302,800	5.9%	2,350,800	8.8%	4,382	-6.8%	234	0.1%
80	Aberdeen (ABZ)	299,400	-5.4%	2,234,600	-2.2%	8,809	-6.3%	356	0.6%

Airports		Passengers				Commercial movements		Freight (metric tones)	
		August 2008	2008v 2007 variation %	January – August	2008v 2007 variation %	August 2008	2008v 2007 variation %	August 2008	2008v 2007 variation %
81	Trondheim (TRD)	295,600	-0.1%	2,308,400	4.2%	4,130	4.0%	175	-10.1%
82	Katowice (KTW)	278,000	11.6%	N/A	N/A	2,420	8.8%	483	-14.3%
83	Turin (TRN)	268,900	-6.0%	2,404,400	1.5%	3,386	-9.5%	56	14.0%
84	Glasgow Prestwick (PIK)	256,800	2.7%	N/A	N/A	1,882	-2.3%	1,304	-47.6%
85	Bari (BRI)	256,400	1.4%	1,733,400	8.5%	2,586	-7.6%	24	-54.0%
86	Madeira (FNC)	248,700	-0.3%	N/A	N/A	2,098	8.1%	537	6.8%
87	Vilnius (VNO)	224,800	24.7%	1,441,700	29.5%	3,423	23.9%	335	-1.2%
88	Dubrovnik (DBV)	212,800	5.9%	862,700	6.8%	1,747	3.4%	68	-20.6%
89	Ljubljana (LJU)	195,900	6.8%	1,134,900	13.3%	3,382	4.6%	677	-39.9%
90	Southampton (SOU)	192,300	-5.9%	1,341,600	2.0%	4,240	-5.1%	17	-26.1%
91	Florence (FLR)	186,500	0.0%	1,337,300	4.3%	2,788	10.5%	6	100.0%
92	Tallinn (TLL)	176,500	5.1%	1,249,300	10.1%	3,045	8.1%	4,283	122.4%
93	Malmö (MMX)	161,500	-9.3%	1,199,600	-5.1%	2,085	-11.0%	2,387	-36.4%
94	Tromsø (TOS)	143,600	-3.1%	1,128,400	3.9%	2,668	-6.9%	167	-9.8%
95	Stockholm-Bromma (BMA)	135,200	-5.3%	1,191,300	3.3%	2,764	2.5%	19	-24.0%
96	Bodø (BOO)	128,300	-5.6%	1,014,400	-0.6%	3,239	-2.2%	134	-0.8%
97	Brindisi (BDS)	118,700	11.8%	695,900	10.5%	1,162	18.8%	26	303.6%
98	Bournemouth (BOH)	115,800	-5.3%	N/A	N/A	1,079	-8.1%	3	-52.1%
99	Strasbourg (SXB)	99,200	-15.8%	900,900	-26.5%	2,179	-8.9%	24	4.3%
100	Liege (LGG)	94,700	42.1%	295,500	18.5%	2,494	1.5%	37,236	12.0%
101	Skopje (SKP)	84,700	5.4%	462,500	7.3%	1,126	1.9%	155	4.1%
102	Kristiansand (KRS)	78,000	2.3%	590,200	2.6%	1,873	2.4%	40	-9.2%
103	Alesund (AES)	71,000	1.1%	536,400	6.1%	971	-0.3%	82	-13.2%

Airports		Passengers				Commercial movements		Freight (metric tonnes)	
		August 2008	2008v 2007 variation %	January – August	2008v 2007 variation %	August 2008	2008v 2007 variation %	August 2008	2008v 2007 variation %
104	Haugesund (HAU)	48,200	1.3%	354,700	5.3%	710	-16.9%	25	-5.9%
105	Ohrid (OHD)	8,700	17.7%	33,300	2.9%	132	20.0%	1	-38.4%
106	Plovdn (PDV)	N/A	N/A	N/A	N/A	N/A	N/A	N/A	N/A
107	Bologna (BLO)	N/A	N/A	N/A	N/A	N/A	N/A	N/A	N/A
108	Humberside (HUY)	N/A	N/A	N/A	N/A	N/A	N/A	N/A	N/A

----- Preliminary traffic figures -----

Total commercial passengers

International passengers (enplaned + deplaned) + **domestic passengers** (enplaned + deplaned) + **direct transit passengers** (passengers who arrive at and depart from the airport on a flight bearing the same number. They are counted only ONCE).

Commercial movements

Landing or take off of an aircraft operating a scheduled or non scheduled commercial service.

Freight

Freight loaded and unloaded (arriving or departing) at the airport. Freight comprises goods, newspapers, diplomatic bags, parcel post and express parcel.

**The ten largest airports on freight – reporting to
ACI EUROPE**
(metric tonnes)

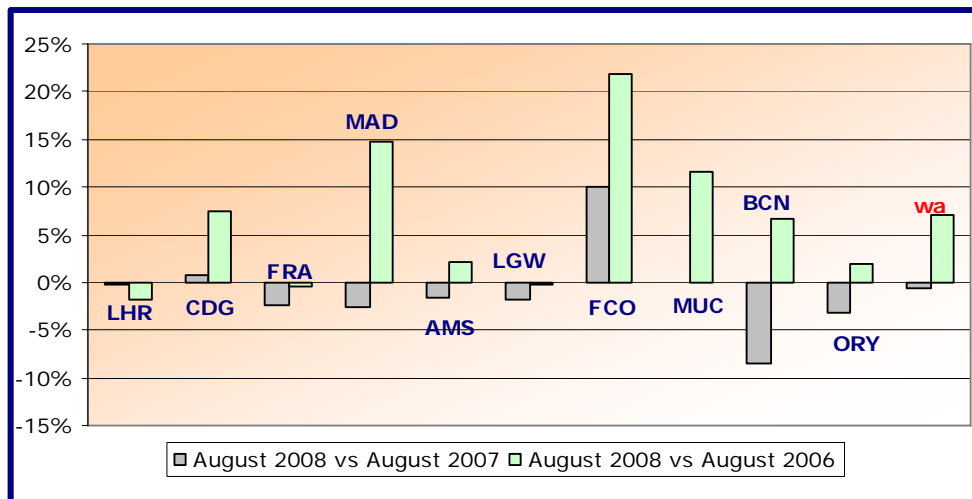
Airports		August 2008	2008v2007 variation %
1	Paris Roissy (CDG)	166,550	4.3%
2	Frankfurt (FRA)	163,131	-5.1%
3	Amsterdam (AMS)	127,823	-1.7%
4	London Heathrow (LHR)	120,285	9.8%
5	Brussels (BRU)	42,835	-26.8%
6	Cologne/Bonn (CGN)	42,614	-28.3%
7	Liege (LGG)	37,236	12.0%
8	Milan-Malpensa (MXP)	25,478	-21.2
9	Madrid (MAD)	24,588	5.1%
10	Zurich (ZRH)	22,481	6.1%

Group 1

**Airports welcoming more than 25 million passengers per year
(percentage traffic variation August 2008 versus 2007 and 2006)**

Airport	2008v2007 variation %	2008v2006 variation %
LHR	-0.3%	+6.2%
CDG	+1.9%	+11.2%
FRA	-3.9%	-2.3%
MAD	-2.7%	+11.4%
AMS	-2.2%	+1.5%
LGW	-1.1%	+2.8%
FCO	+12.5%	+24.8%
MUC	-1.3%	+11.3%
BCN	-8.6%	+3.9%
ORY	+1.0%	+6.7%
wa*	-0.7%	+7.1%

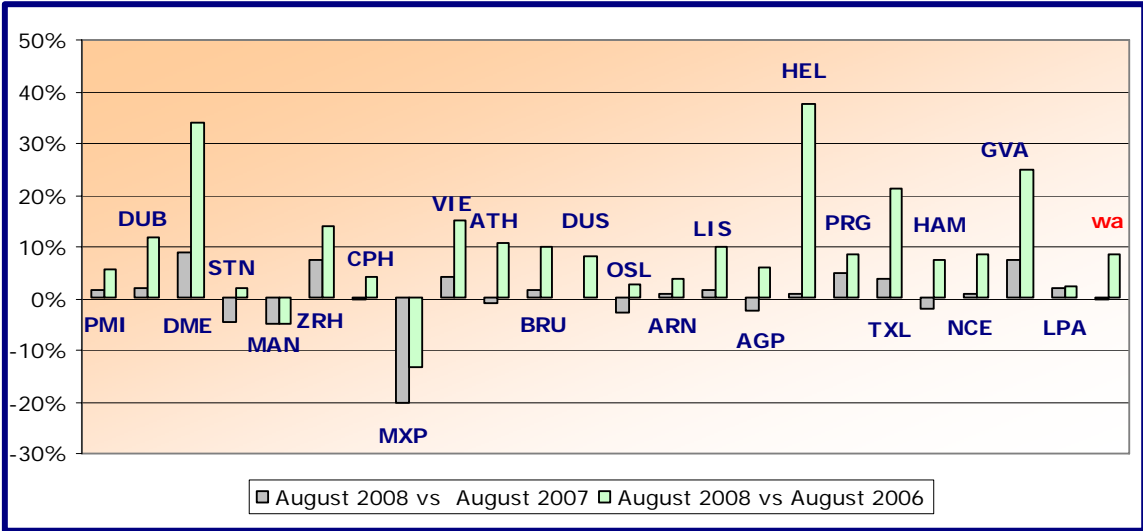
*weighted average=SUM(%change*pax)/SUM(pax)



Group 2
Airports welcoming between 10 and 25 million passengers
per year (percentage traffic variation August 2008 versus 2007 and 2006)

Airport	2008v2007 variation %	2008v2006 variation %
PMI	+1.6%	+5.5%
DUB	+2.1%	+11.7%
DME	+9.0%	+33.9%
STN	-4.6%	+2.1%
MAN	-4.8%	-5.0%
ZRH	+7.4%	+14.1%
CPH	-0.3%	+4.3%
MXP	-20.1%	-13.4%
VIE	+4.2%	+15.2%
ATH	-0.8%	+10.9%
BRU	+1.6%	+9.9%
DUS	+0.1%	+8.1%
OSL	-2.6%	+2.7%
ARN	+0.8%	+3.8%
LIS	+1.7%	+10.2%
AGP	-2.3%	+5.9%
HEL	+0.8%	+37.8%
PRG	+4.8%	+8.7%
TXL	+3.8%	+21.2%
HAM	-2.1%	+7.4%
NCE	+1.1%	+8.6%
GVA	+7.5%	+24.9%
LPA	+2.2%	+2.2%
wa*	-0.1%	+8.4%

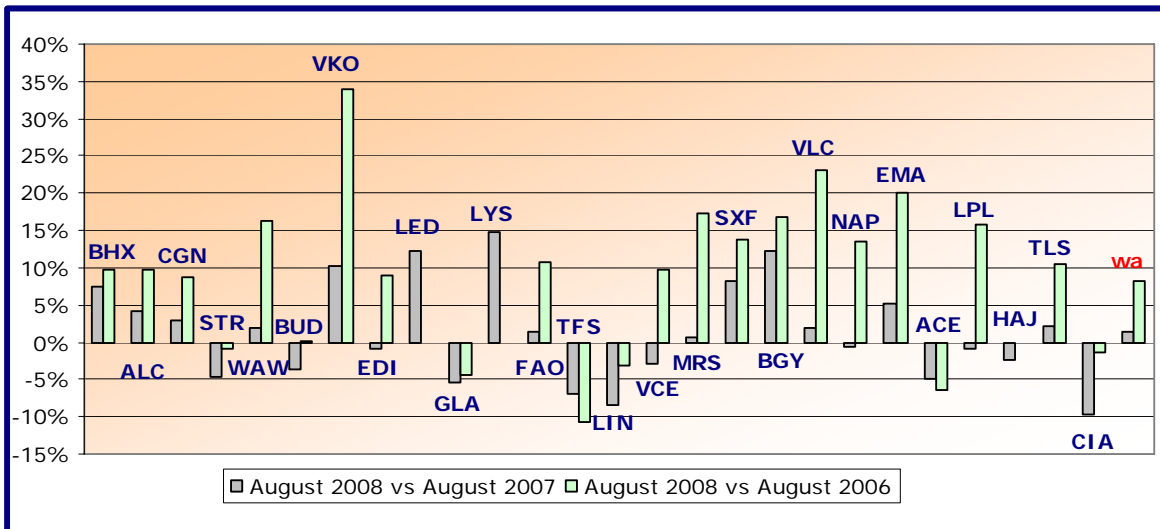
*weighted average=SUM(%change*pax)/SUM(pax)



Group 3
Airports welcoming between 5 and 10 million passengers
per year (percentage traffic variation August 2008 versus 2007 and 2006)

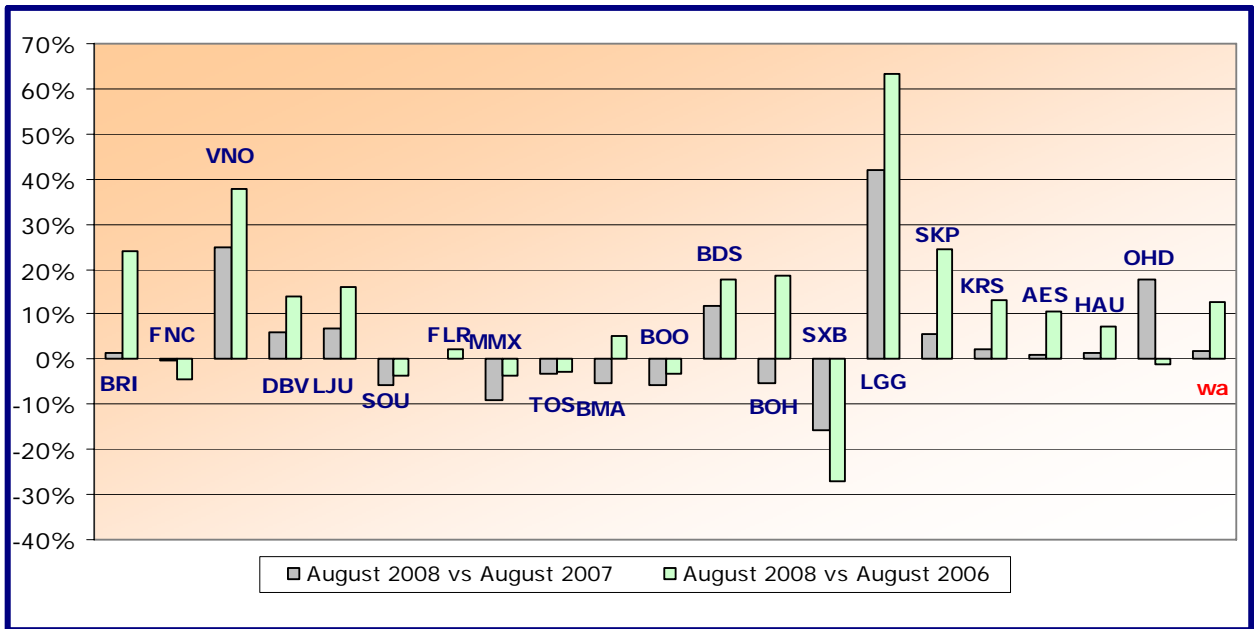
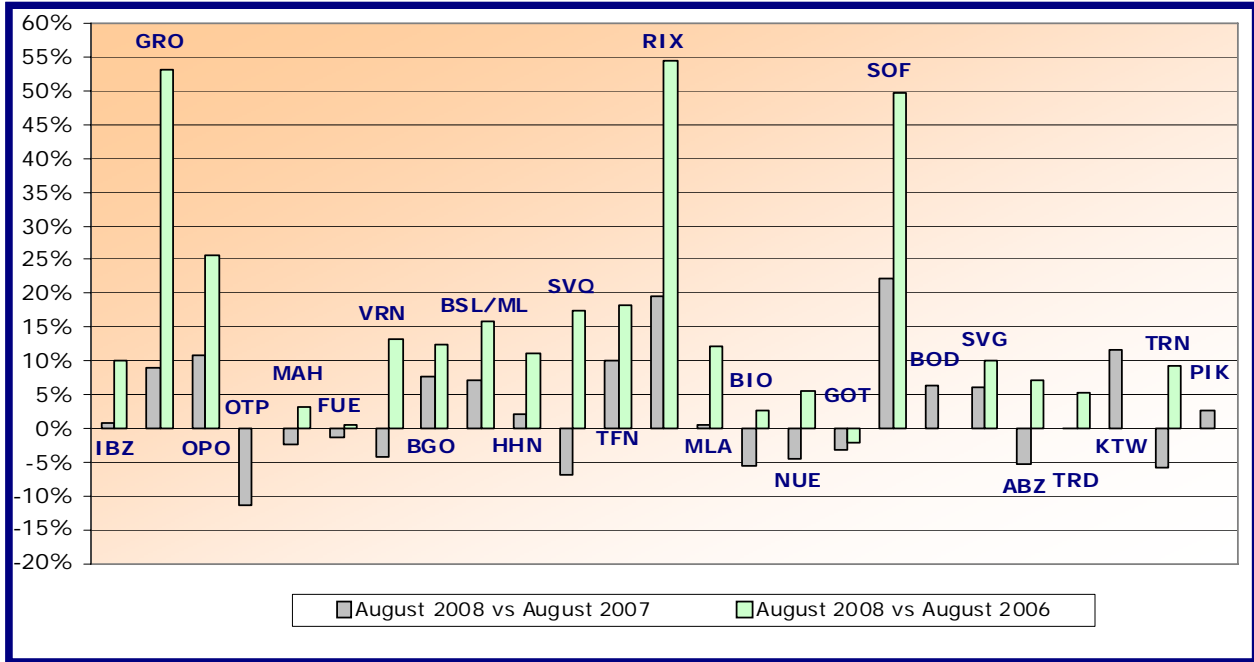
Airport	2008v2007 variation %	2008v2006 variation %
BHX	+7.4%	+9.8%
ALC	+4.2%	+9.6%
CGN	+2.9%	+8.8%
STR	-4.6%	-0.8%
WAW	+1.9%	+16.2%
BUD	-3.6%	+0.1%
VKO	+10.3%	+33.9%
EDI	-1.0%	+9.1%
LED	+12.2%	N/A
GLA	-5.3%	-4.5%
LYS	+14.8%	N/A
FAO	+1.5%	+10.8%
TFS	-7.0%	-10.8%
LIN	-8.4%	-3.1%
VCE	-2.8%	+9.8%
MRS	+0.8%	+17.3%
SXF	+8.1%	+13.7%
BGY	+12.1%	+16.8%
VLC	+1.9%	+23.1%
NAP	-0.5%	+13.5%
EMA	+5.1%	+20.1%
ACE	-4.8%	-6.4%
LPL	-0.9%	+15.7%
HAJ	-2.3%	N/A
TLS	+2.1%	+10.6%
CIA	-9.6%	-1.5%
wa*	+1.3%	+8.3%

*weighted average=SUM(%change*pax)/SUM(pax)



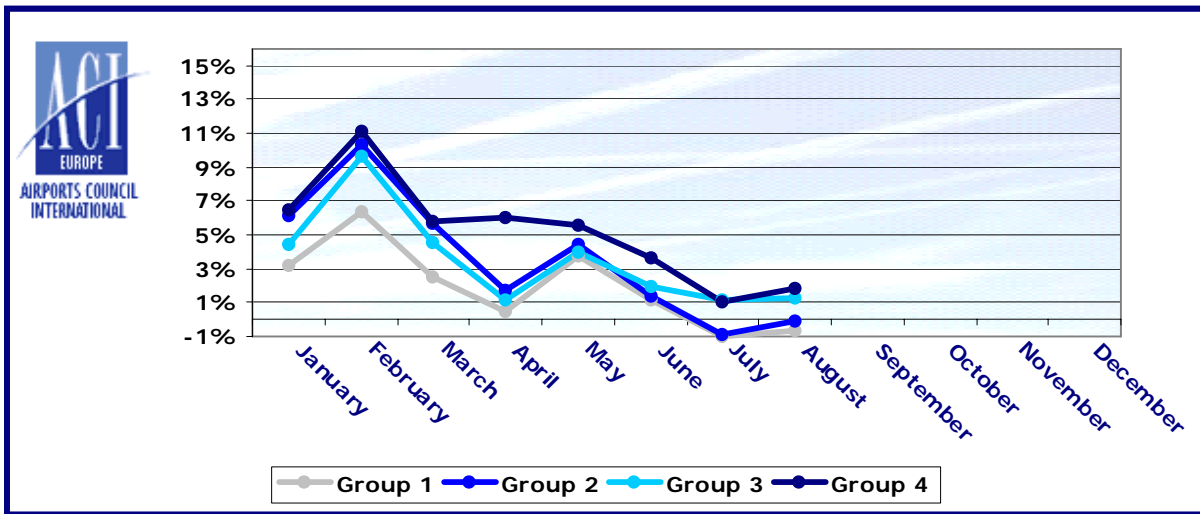
Group 4		
Airports welcoming less than 5 million passengers		
per year (percentage traffic variation August 2008 versus 2007 and 2006)		
Airport	2008v2007 variation %	2008v2006 variation %
IBZ	+0.9%	+10.2%
GRO	+9.0%	+53.3%
OPO	+10.9%	+25.7%
OTP	-11.3%	N/A
MAH	-2.4%	+3.2%
FUE	-1.5%	+0.5%
VRN	-4.3%	+13.1%
BGO	+7.7%	+12.4%
BSL/ML	+7.2%	+15.8%
HHN	+2.0%	+11.1%
SVQ	-7.0%	+17.5%
TFN	+10.1%	+18.3%
RIX	+19.5%	+54.6%
MLA	+0.6%	+12.2%
BIO	-5.4%	+2.7%
NUE	-4.6%	+5.6%
GOT	-3.2%	-2.2%
SOF	+22.2%	+49.8%
BOD	+6.4%	N/A
SVG	+5.9%	+10.0%
ABZ	-5.4%	+7.1%
TRD	-0.1%	+5.3%
KTW	+11.6%	N/A
TRN	-6.0%	+9.1%
PIK	+2.7%	N/A
BRI	+1.4%	+24.1%
FNC	-0.3%	-4.3%
VNO	+24.7%	+37.8%
DBV	+5.9%	+14.0%
LJU	+6.8%	+16.2%
SOU	-5.9%	-3.5%
FLR	+0.0%	+2.1%
MMX	-9.3%	-3.8%
TOS	-3.1%	-2.8%
BMA	-5.3%	+5.1%
BOO	-5.6%	-3.1%
BDS	+11.8%	+17.8%
BOH	-5.3%	+18.4%
SXB	-15.8%	-27.0%
LGG	+42.1%	+63.5%
SKP	+5.4%	+24.6%
KRS	+2.3%	+13.2%
AES	+1.1%	+10.4%
HAU	+1.3%	+7.2%
OHD	+17.7%	-1.1%
wa*	+1.9%	+12.9%

*weighted average=SUM(%change*pax)/SUM(pax)



Year-to-date airport passenger trends

The graphic illustrates and compares the trends of the different airport Groups 1, 2, 3 and 4 for 2008.



The graphic compares the amount of total commercial passengers 2008 with 2007. The airports included, in this graphic, are: LHR, FRA, CDG, AMS, MAD, LGW, FCO, MUC, BCN, ORY, STN, MAN, MXP, ZRH, CPH, ARN, DUB, OS L, BRU, VIE, DUS, ATH, PMI, AGP, DME, HEL, TXL, LIS, HAM, PRG.

