



# Airport Traffic Report

## November 2010

## European passenger traffic up 7.3% during November 2010

The 'ACI EUROPE Airport Traffic Report - November 2010' includes **127 airports** in total.




The overall **passenger** traffic at European airports increased by **7.3%** in **November 2010** compared with November 2009. The overall **freight** traffic among European airports increased **7.9%** in November 2010 when compared with the corresponding month in 2009. The overall figure for **movements** at European airports increased **2.7%** in November 2010 when compared with November 2009.




The accumulated figure for **passenger** traffic **January to November 2010** increase by **4.8%** compared with the corresponding period 2009. The accumulated figure for **freight** traffic during **January to November** increased by **20.3%** and **movements** increased by **0.7%** during the corresponding period when compared with 2009.




Airports welcoming more than 25 million passengers per year (Group 1), airports welcoming between 10 and 25 million passengers (Group 2), airports welcoming between 5 and 10 million passengers (Group 3) and airports welcoming less than 5 million passengers per year (Group 4) reported an average increase/decrease of **6.9%**, **7.2%**, **7.8%** and **8.0%** respectively when compared with November 2009. The same comparison of November 2010 with November 2008 demonstrates an average increase/decrease of **8.4%**, **7.5%**, **5.0%** and **10.7%** respectively.




Examples of airports that experienced the highest increase in passenger traffic per group, when comparing November 2010 with November 2009, include:

- **Group 1 airports** – Barcelona (+**15.1%**), Istanbul IST (+**12.4%**), Amsterdam (+**11.1%**) and Munich (+**10.8%**)
- **Group 2 airports** – Moscow SVO (+**28.4%**), Moscow DME (+**16.2%**), Helsinki (+**13.6%**) and Antalya (+**12.6%**)
- **Group 3 airports** – Istanbul SAW (+**47.3%**), Ankara (+**31.5%**), Moscow VKO (+**13.7%**), and Stuttgart (+**11.0%**)
- **Group 4 airports** – Brindisi (+**52.8%**), Podgorica (+**42.2%**), Dubrovnik (+**36.4%**), and Bari (+**27.7%**).

Airport	Passengers		Commercial movements		Freight		
	 November 2010		 November 2010		 November 2010		
LONDON	LHR	5245253	4,1%	38004	2,6%	127961	3,7%
PARIS	CDG	4417474	3,5%	40046	-0,1%	196000	12,3%
FRANKFURT	FRA	4123316	5,6%	37962	1,3%	196237	5,8%
MADRID	MAD	3868966	4,4%	35644	0,7%	34981	14,1%
AMSTERDAM	AMS	3513877	11,1%	31417	5,4%	136928	5,6%
MUNICH	MUC	2847057	10,8%	31191	2,7%	25436	21,8%
ROME	FCO	2684009	8,6%	25326	1,2%	12650	3,7%
ISTANBUL	IST	2626783	12,4%	22911	5,8%	37053	-4,2%
BARCELONA	BCN	2319644	15,1%	23131	9,2%	9058	4,7%
LONDON	LGW	2125519	2,8%	17011	-0,5%	9081	13,3%
PARIS	ORY	1942882	3,5%	17845	2,2%	7350	-12,5%
ZURICH	ZRH	1768603	4,6%	18721	3,3%	35802	49,0%
MOSCOW	DME	1708475	16,2%	17745	14,8%	14208	21,6%
COPENHAGEN	CPH	1683990	12,2%	20052	4,5%	N/A	N/A
OSLO	OSL	1587525	7,8%	18646	2,6%	4215	16,3%
VIENNA	VIE	1550324	12,1%	20252	2,1%	19781	-9,8%
DÜSSELDORF	DUS	1493070	10,3%	16649	-1,2%	7027	9,5%
MOSCOW	SVO	1476843	28,4%	14941	17,7%	10707	-9,2%
STOCKHOLM	ARN	1465361	12,1%	16808	4,2%	7772	34,2%
MILAN	MXP	1368496	9,4%	14860	2,8%	38988	9,6%
BRUSSELS	BRU	1320889	6,6%	16895	4,8%	36713	3,1%
DUBLIN	DUB	1312408	-3,9%	N/A	N/A	8768	7,6%
BERLIN	TXL	1299444	10,7%	13264	4,0%	2144	37,9%
LONDON	STN	1214057	-7,4%	9802	-11,7%	17461	-1,6%
MANCHESTER	MAN	1157361	1,5%	11178	1,7%	10284	-1,7%
HAMBURG	HAM	1052902	8,8%	11590	-2,4%	6506	16,6%
HELSINKI	HEL	1045656	13,6%	15693	15,6%	14394	35,7%
ISTANBUL	SAW	1008744	47,3%	8798	35,5%	1352	20,9%
ATHENS	ATH	988698	-9,6%	11710	-17,1%	6724	-11,1%
LISBON	LIS	967843	4,4%	10206	0,1%	7846	-5,3%
GRAN CANARIA	LPA	868345	2,3%	8564	-2,7%	2256	-2,2%
ANTALYA	AYT	858689	12,6%	6459	9,8%	361	-28,8%
PALMA DE MALLORCA	PMI	806907	-3,5%	8393	-5,5%	1270	0,6%
GENEVA	GVA	794970	10,3%	9289	5,8%	3220	17,2%
PRAGUE	PRG	793160	-4,3%	11387	-3,8%	5180	41,9%
MALAGA	AGP	716030	9,2%	6399	5,7%	253	16,3%
MILAN	LIN	690395	10,7%	7847	2,1%	1381	17,9%
TENERIFE	TFS	687717	6,2%	4532	1,1%	388	-1,5%
STUTTGART	STR	685175	11,0%	8290	-3,5%	1570	-7,0%
COLOGNE	CGN	681756	-0,5%	9237	-2,1%	60921	23,0%
ANKARA	ESB	678999	31,5%	5780	28,8%	1243	25,8%
MOSCOW	VKO	651955	13,7%	8550	10,0%	3653	33,0%
WARSAW	WAW	635849	9,2%	9671	1,6%	3672	20,9%
EDINBURGH	EDI	622210	-3,9%	7609	-4,8%	1658	-19,7%
NICE	NCE	621418	4,3%	7922	3,6%	1259	27,4%
LYON	LYS	613350	8,2%	9244	-1,5%	3139	7,5%
BUDAPEST	BUD	596938	3,3%	7786	2,7%	5189	5,1%
ALICANTE	ALC	578252	1,5%	4670	-4,4%	252	-0,5%
BERLIN	SXF	568831	9,2%	5280	8,9%	386	6,8%
MILAN	BGY	565991	5,6%	4958	0,2%	9546	5,9%
MARSEILLE	MRS	563254	4,9%	7741	0,3%	4275	-0,6%
BIRMINGHAM	BHX	545203	-4,0%	6314	-5,5%	1793	0,3%
TOULOUSE	TLS	531221	6,5%	6823	7,6%	4297	6,0%
GLASGOW	GLA	486866	-0,5%	5633	3,7%	348	118,5%
VENICE	VCE	467491	0,2%	5015	0,0%	3178	11,8%
CHARLEROI	CRL	426237	24,8%	2986	20,6%	1	222,2%
BOLOGNA	BLQ	425734	21,2%	5084	4,5%	2340	3,7%
BERGEN	BGO	417688	7,3%	6213	3,4%	212	-7,6%
CATANIA	CTA	410152	8,1%	3862	1,0%	739	20,6%
LANZAROTE	ACE	392184	-2,5%	3542	-0,3%	348	8,9%
VALENCIA	VLC	386219	20,8%	5472	13,6%	1106	22,8%
PORTO	OPO	382406	17,1%	4478	10,5%	2509	-5,3%
NUREMBERG	NUE	378883	10,6%	4812	-2,6%	730	-4,9%
ROME	CIA	376355	3,5%	2770	1,2%	1709	15,6%
NAPLES	NAP	372462	7,1%	4106	0,1%	70	-27,1%
HANOVER	HAJ	369003	7,0%	4533	5,8%	351	-3,3%
BUCHAREST	OTP	367204	10,2%	5760	2,8%	1828	9,1%
GOTHENBURG	GOT	363090	19,1%	5475	15,0%	4311	7,5%

Airport	Passengers		Commercial movements		Freight		
	 November 2010		 November 2010		 November 2010		
FUERTEVENTURA	FUE	358073	17,7%	3181	9,9%	146	1,1%
SEVILLA	SVQ	354540	19,7%	3703	13,3%	449	14,8%
RIGA	RIX	322887	5,0%	4865	3,9%	600	12,0%
TRONDHEIM	TRD	317403	5,4%	4448	5,8%	133	-9,0%
STAVANGER	SVG	312225	4,2%	4560	3,9%	221	-24,0%
BASEL	BSL	307571	12,9%	4374	4,8%	4142	33,4%
TENERIFE	TFN	304256	-4,1%	4406	-9,9%	1541	10,1%
BILBAO	BIO	299907	7,4%	3846	-0,8%	236	7,7%
PALERMO	PMO	298622	11,3%	3360	0,9%	69	-13,8%
BORDEAUX	BOD	274044	15,0%	3721	7,1%	688	25,4%
TURIN	TRN	270822	23,3%	3555	18,3%	81	14,1%
BARI	BRI	258526	27,7%	2440	19,5%	16	2,8%
SOFIA	SOF	229806	7,8%	3320	9,7%	1394	21,9%
HAHN	HHN	227192	-0,6%	2562	0,3%	20053	23,9%
ABERDEEN	ABZ	226179	-1,9%	7280	-6,3%	404	18,9%
CAGLIARI	CAG	221761	5,0%	2192	-6,9%	142	-10,7%
STOCKHOLM	BMA	211249	4,6%	4187	7,2%	23	21,1%
GIRONA	GRO	208209	-34,4%	1705	-35,3%	9	-63,8%
MALTA	MLA	203505	12,4%	1925	9,5%	1362	-22,1%
FARO	FAO	200927	-3,9%	1677	-6,7%	12	-28,0%
BELGRADE	BEG	182821	24,4%	3038	16,9%	871	45,2%
VERONA	VRN	168902	4,3%	2150	-4,3%	420	-21,8%
FUNCHAL	FNC	153946	-5,5%	1568	-6,3%	457	-1,7%
ZAGREB	ZAG	152316	4,8%	2630	-2,2%	595	-22,0%
EINDHOVEN	EIN	151019	8,2%	1139	3,1%	N/A	N/A
MALMO	MMX	145122	7,3%	2061	0,7%	3191	39,1%
TROMSOE	TOS	134967	2,1%	2381	-5,5%	161	-19,0%
BODO	BOO	133209	2,0%	2889	-3,4%	98	-12,2%
BRINDISI	BDS	130335	52,8%	1043	24,5%	2	-89,0%
FLORENCE	FLR	127159	4,9%	1863	-0,1%	17	7,7%
SOUTHAMPTON	SOU	127019	-3,2%	3028	-2,2%	22	16,9%
LUXEMBOURG	LUX	125935	12,5%	3972	3,5%	62309	-5,5%
IBIZA	IBZ	115888	7,0%	1848	6,3%	175	-5,1%
TALLINN	TLL	109303	9,1%	2156	2,7%	909	-63,3%
KEFLAVIK	KEF	107272	13,2%	1532	6,4%	3078	-5,4%
VILNIUS	VNO	90598	-5,3%	1865	12,0%	343	23,8%
PRISTINA	PRN	86643	6,8%	443	8,6%	92	-30,7%
LJUBLJANA	LJU	84918	-4,1%	2159	-8,9%	615	6,4%
STRASBOURG	SXB	84814	0,3%	2058	-6,1%	16	-29,1%
SALZBURG	SZG	83834	0,5%	1268	-9,1%	18	33,1%
UMEA	UME	82452	8,9%	1315	15,2%	11	0,0%
KRISTIANSAND	KRS	76174	5,0%	1265	4,2%	33	12,4%
MENORCA	MAH	74796	-1,0%	1212	0,3%	145	-6,0%
AALESUND	AES	72084	5,3%	872	-5,3%	37	-20,7%
TRIESTE	TRS	59654	22,0%	884	15,4%	5	-87,8%
OLBIA	OLB	50461	2,2%	582	1,2%	13	-16,4%
HAUGESUND	HAU	48551	0,2%	595	-6,4%	22	-4,0%
SKOPJE	SKP	47983	18,7%	772	3,8%	209	24,7%
PODGORICA	TGD	46849	42,2%	487	18,8%	64	-77,5%
SARAJEVO	SJJ	40912	3,6%	394	-9,0%	155	-0,6%
LINZ	LNZ	40210	-3,4%	869	-16,0%	579	13,4%
DUBROVNIK	DBV	33150	36,4%	395	29,1%	28	-20,5%
TOULON	TLN	29145	-9,6%	472	0,6%	N/A	N/A
SPLIT	SPU	27002	-9,3%	397	93,7%	48	-4,7%
REUS	REU	26856	-19,1%	326	-0,9%	19	1251,4%
VARNA	VAR	24767	1,2%	366	-12,2%	5	17,4%
HUMBERSIDE	HUY	16474	-4,3%	1100	-7,5%	54	-21,6%
BOURNEMOUTH	BOH	12175	-70,2%	373	-28,1%	N/A	N/A
LIEGE	LGG	8413	-36,9%	2362	4,6%	58434	10,4%

Airport		Passengers		Commercial movements		Freight	
		 January - November 2010		 January - November 2010		 January - November 2010	
London	LHR	61071215	0,6%	416739	-1,5%	1364171	17,8%
Paris	CDG	53839620	0,7%	454841	-5,0%	N/A	N/A
Frankfurt	FRA	49224096	4,5%	420043	0,7%	2022249	23,5%
Madrid	MAD	46168789	3,4%	399357	0,0%	336231	24,5%
Amsterdam	AMS	41968544	3,7%	357818	-1,5%	1386515	18,7%
Rome	FCO	33585584	7,6%	298303	1,2%	140719	23,1%
Munich	MUC	32194509	6,2%	341137	-2,4%	251561	28,1%
Istanbul	IST	29751077	8,2%	251218	3,2%	409531	22,9%
London	LGW	29482000	-2,6%	218446	-4,2%	96776	45,3%
Barcelona	BCN	27122284	6,9%	253983	-0,9%	95710	17,7%
Paris	ORY	23249077	0,4%	199006	-2,3%	N/A	N/A
Antalya	AYT	21358096	19,2%	138724	17,3%	7500	30,3%
Zurich	ZRH	21100297	4,7%	210231	2,3%	283269	22,6%
Moscow	DME	20638512	20,0%	194118	16,2%	126419	23,9%
Palma De Mallorca	PMI	20390514	-0,2%	164967	-1,5%	16051	1,6%
Copenhagen	CPH	19944662	9,0%	221850	4,0%	N/A	N/A
Vienna	VIE	18248972	8,9%	226051	1,5%	202325	20,3%
Moscow	SVO	17929475	31,8%	165238	16,2%	113538	20,2%
Düsseldorf	DUS	17761321	6,9%	189790	0,7%	81482	37,5%
Oslo	OSL	17712799	5,3%	196476	0,4%	42806	-6,4%
Milan	MXP	17544272	7,9%	174900	3,2%	384786	27,4%
London	STN	17355408	-6,6%	133446	-8,1%	186581	11,2%
Manchester	MAN	16747400	-5,6%	139019	-8,8%	106107	13,1%
Brussels	BRU	15974616	0,9%	190218	-3,6%	395598	7,2%
Stockholm	ARN	15670939	5,1%	171291	-1,0%	N/A	N/A
Athens	ATH	14422840	-4,3%	164017	-7,4%	79980	-6,2%
Berlin	TXL	13957237	6,3%	142220	2,3%	20222	37,2%
Lisbon	LIS	13016183	6,1%	127170	4,4%	85784	14,4%
Hamburg	HAM	12062804	6,4%	128375	1,0%	N/A	N/A
Helsinki	HEL	11940075	2,5%	158191	0,4%	132136	28,9%
Malaga	AGP	11435974	4,1%	94743	3,1%	2818	-10,2%
Geneva	GVA	10860848	5,2%	114502	0,2%	34906	30,6%
Prague	PRG	10814270	0,0%	142050	-4,5%	47653	44,3%
Istanbul	SAW	10648006	81,4%	90301	78,2%	19708	87,1%
Cologne	CGN	9247480	1,8%	112606	0,7%	584001	16,8%
Nice	NCE	9011462	-2,5%	110014	-1,6%	14000	38,0%
Alicante	ALC	8897409	3,4%	69092	1,5%	2875	-1,5%
Moscow	VKO	8815096	23,5%	98547	12,9%	33885	37,2%
Stuttgart	STR	8635755	3,3%	99158	-4,5%	18353	15,4%
Gran Canaria	LPA	8589242	3,7%	88836	2,2%	22168	-5,5%
Warsaw	WAW	8125984	4,8%	112606	1,1%	37026	22,8%
Edinburgh	EDI	8125424	-4,1%	95151	-4,7%	19315	-12,4%
Birmingham	BHX	8084214	-5,5%	81501	-8,0%	20696	70,7%
Milan	LIN	7653375	-0,8%	84789	-2,8%	14405	13,6%
Budapest	BUD	7623822	1,2%	93013	-4,0%	54967	21,1%
Milan	BGY	7123922	7,6%	59603	4,4%	95891	5,5%
Berlin	SXF	6752125	7,5%	58776	5,7%	4367	21,7%
Tenerife	TFS	6657035	3,2%	44557	4,0%	3890	-21,3%
Glasgow	GLA	6191335	-9,0%	65019	-6,2%	3409	36,6%
Naples	NAP	5210810	4,8%	51942	-0,7%	866	-13,2%
Faro	FAO	5182191	5,8%	38132	6,6%	277	-52,7%
Bologna	BLQ	5098915	15,3%	59408	6,9%	24267	7,2%
Ibiza	IBZ	4921741	10,5%	49767	8,1%	3033	2,5%
Porto	OPO	4841694	17,3%	50677	5,8%	26542	7,3%
Charleroi	CRL	4758250	34,1%	32775	37,4%	N/A	N/A
Hanover	HAJ	4750775	1,5%	53964	-4,8%	4587	43,4%
Girona	GRO	4655328	-5,9%	34140	-5,9%	48	-30,8%
Valencia	VLC	4598654	4,0%	59027	-2,0%	10570	19,7%
Lanzarote	ACE	4573771	6,0%	40969	10,1%	3544	-7,8%
Bergen	BGO	4508042	4,7%	65766	2,5%	2474	0,2%
Riga	RIX	4340170	15,8%	60412	12,0%	6416	39,4%
Rome	CIA	4170263	-5,1%	29642	-6,2%	16252	5,4%
Sevilla	SVQ	3894708	3,9%	39302	0,3%	5089	11,8%
Fuerteventura	FUE	3846886	11,9%	34754	8,8%	1556	-11,5%
Gothenburg	GOT	3842768	12,0%	54346	7,0%	N/A	N/A
Basel	BSL	3825208	6,4%	51810	3,2%	39396	40,3%
East Midlands	EMA	3736690	-9,6%	49823	-7,7%	226780	8,4%
Tenerife	TFN	3723451	0,4%	51892	-1,7%	14446	-13,6%

Airport		Passengers		Commercial movements		Freight	
			January - November 2010		January - November 2010		January - November 2010
Bilbao	BIO	3626409	7,7%	43955	2,5%	2364	-4,3%
Bordeaux	BOD	3392827	10,1%	43096	1,6%	6159	8,0%
Hahn	HHN	3282351	-7,6%	32980	-4,4%	149809	56,7%
Turin	TRN	3276040	11,0%	39936	-3,0%	1076	-5,1%
Trondheim	TRD	3262698	2,6%	44684	2,0%	1524	-7,9%
Stavanger	SVG	3205642	0,9%	45380	-3,9%	2538	-9,3%
Bari	BRI	3136452	19,8%	29997	12,4%	187	-25,0%
Malta	MLA	3130049	12,9%	28062	7,3%	13867	-5,8%
Sofia	SOF	3044891	5,5%	37710	2,1%	12155	1,3%
Cagliari	CAG	2904342	3,2%	27840	-4,4%	1521	-6,1%
Aberdeen	ABZ	2579838	-7,4%	83707	-6,6%	4724	3,3%
Menorca	MAH	2445120	3,6%	26045	2,1%	2254	-7,9%
Stockholm	BMA	1904055	3,4%	37951	3,2%	N/A	N/A
Southampton	SOU	1641985	-1,8%	38123	0,8%	114	-39,9%
Tromsø	TOS	1532413	1,1%	28208	2,1%	1804	-8,5%
Luxembourg	LUX	1522928	5,6%	43681	1,3%	645188	13,2%
Malmo	MMX	1503650	3,5%	20749	0,7%	N/A	N/A
Bodo	BOO	1497743	3,8%	33099	0,2%	1028	-19,0%
Brindisi	BDS	1472982	46,3%	12221	28,7%	122	7,0%
Reus	REU	1379903	-16,7%	10133	-14,9%	N/A	N/A
Vilnius	VNO	1313416	7,9%	22989	19,4%	3320	32,1%
Dubrovnik	DBV	1249656	13,3%	11982	12,9%	379	-21,7%
Kristiansand	KRS	776270	-1,6%	15540	-8,0%	304	-13,6%
Aalesund	AES	771132	7,3%	9442	0,6%	423	-37,5%
Haugesund	HAU	517321	5,2%	6187	5,4%	241	-15,3%
Liege	LGG	287392	-15,7%	26468	10,0%	587358	37,6%

----- Preliminary traffic figures -----

**Total commercial passengers**

**International passengers** (enplaned + deplaned) + **domestic passengers** (enplaned + deplaned) + **direct transit passengers** (passengers who arrive at and depart from the airport on a flight bearing the same number. They are counted only ONCE).

**Commercial movements**

Landing or take off of an aircraft operating a scheduled or non scheduled commercial service.

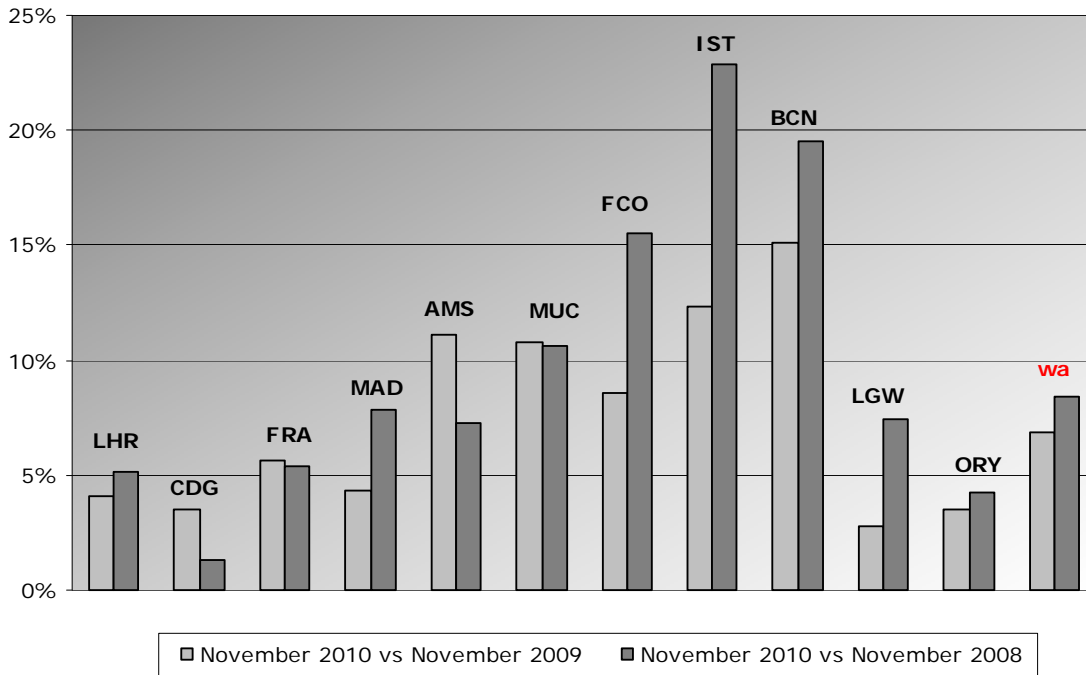
**Freight**

Freight loaded and unloaded (arriving or departing) at the airport. Freight comprises goods, newspapers, diplomatic bags, parcel post and express parcel.

**Group 1**  
**Airports welcoming more than 25 million passengers per year**  
**(percentage traffic variation November 2010 versus 2009 and 2008)**

Airport	2010v2009 variation %	2010v2008 variation %
LHR	4,1%	5,1%
CDG	3,5%	1,3%
FRA	5,6%	5,4%
MAD	4,4%	7,8%
AMS	11,1%	7,3%
MUC	10,8%	10,6%
FCO	8,6%	15,6%
IST	12,4%	22,9%
BCN	15,1%	19,5%
LGW	2,8%	7,4%
ORY	3,5%	4,3%
<b>wa*</b>	<b>6,9%</b>	<b>8,4%</b>

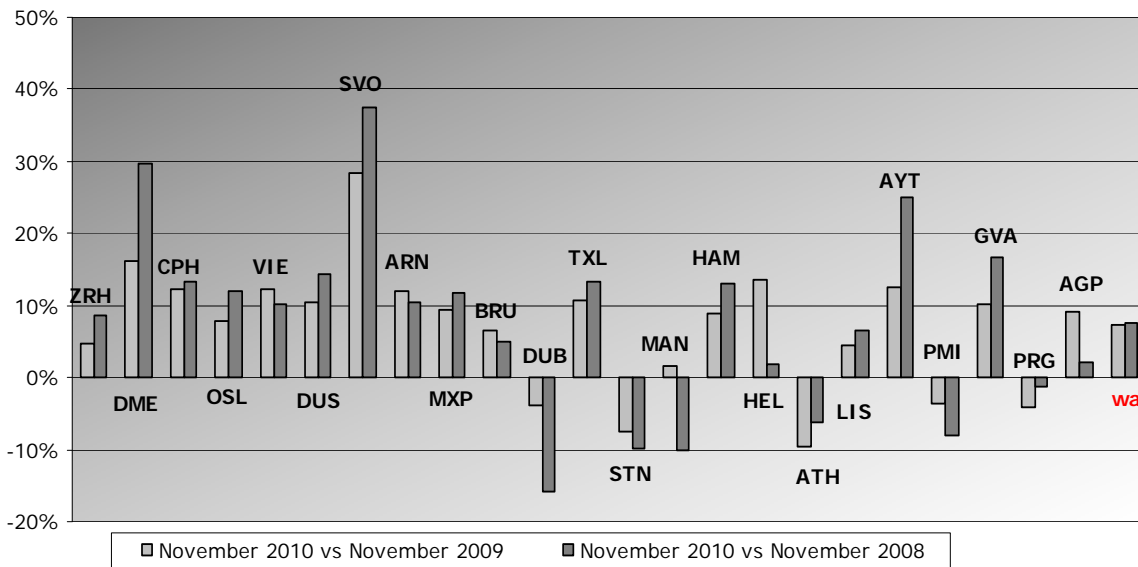
\*weighted average=SUM(%change\*pax)/SUM(pax)



**Group 2**  
**Airports welcoming between 10 and 25 million passengers**  
**per year (percentage traffic variation November 2010 versus 2009 and 2008)**

Airport	2010v2009 variation %	2010v2008 variation %
ZRH	4,6%	8,6%
DME	16,2%	29,6%
CPH	12,2%	13,4%
OSL	7,8%	11,9%
VIE	12,1%	10,2%
DUS	10,3%	14,4%
SVO	28,4%	37,4%
ARN	12,1%	10,4%
MXP	9,4%	11,7%
BRU	6,6%	5,0%
DUB	-3,9%	-15,9%
TXL	10,7%	13,3%
STN	-7,4%	-9,9%
MAN	1,5%	-10,2%
HAM	8,8%	13,0%
HEL	13,6%	1,9%
ATH	-9,6%	-6,3%
LIS	4,4%	6,6%
AYT	12,6%	25,1%
PMI	-3,5%	-8,1%
GVA	10,3%	16,6%
PRG	-4,3%	-1,2%
AGP	9,2%	2,2%
<b>wa*</b>	<b>7,2%</b>	<b>7,5%</b>

\*weighted average =  $\text{SUM}(\% \text{change} * \text{pax}) / \text{SUM}(\text{pax})$

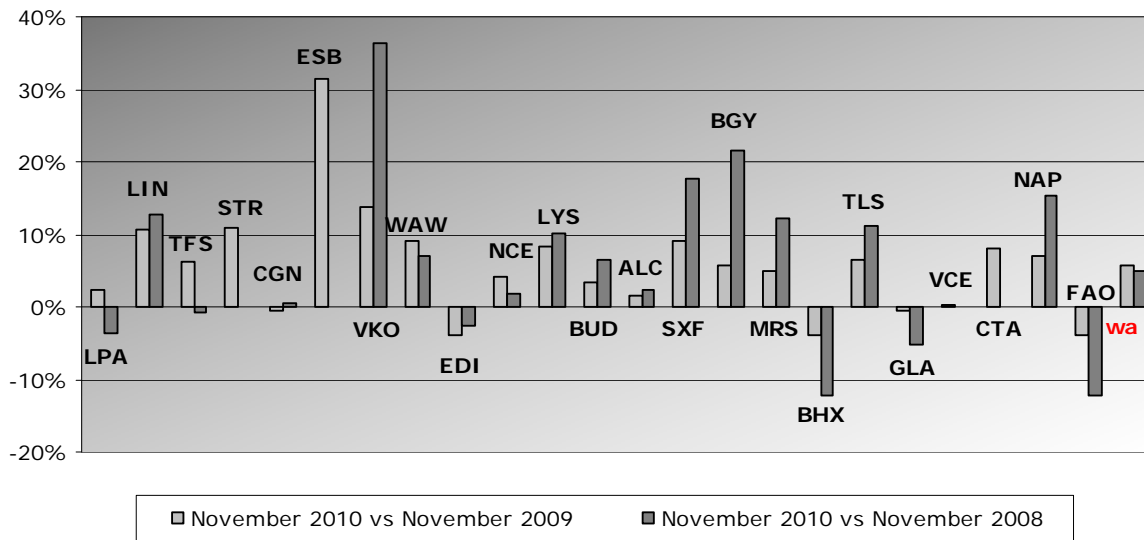




**Group 3**  
**Airports welcoming between 5 and 10 million passengers**  
**per year (percentage traffic variation November 2010 versus 2009 and 2008)**

Airport	2010v2009 variation %	2010v2008 variation %
LPA	2,3%	-3,7%
LIN	10,7%	12,8%
TFS	6,2%	-0,7%
STR	11,0%	-0,1%
CGN	-0,5%	0,5%
ESB	31,5%	N/A
VKO	13,7%	36,5%
WAW	9,2%	7,1%
EDI	-3,9%	-2,6%
NCE	4,3%	1,9%
LYS	8,2%	10,2%
BUD	3,3%	6,4%
ALC	1,5%	2,4%
SXF	9,2%	17,7%
BGY	5,6%	21,6%
MRS	4,9%	12,3%
BHX	-4,0%	-12,1%
TLS	6,5%	11,2%
GLA	-0,5%	-5,1%
VCE	0,2%	N/A
CTA	8,1%	N/A
NAP	7,1%	15,3%
FAO	-3,9%	-12,2%
<b>wa*</b>	<b>5,7%</b>	<b>5,0%</b>

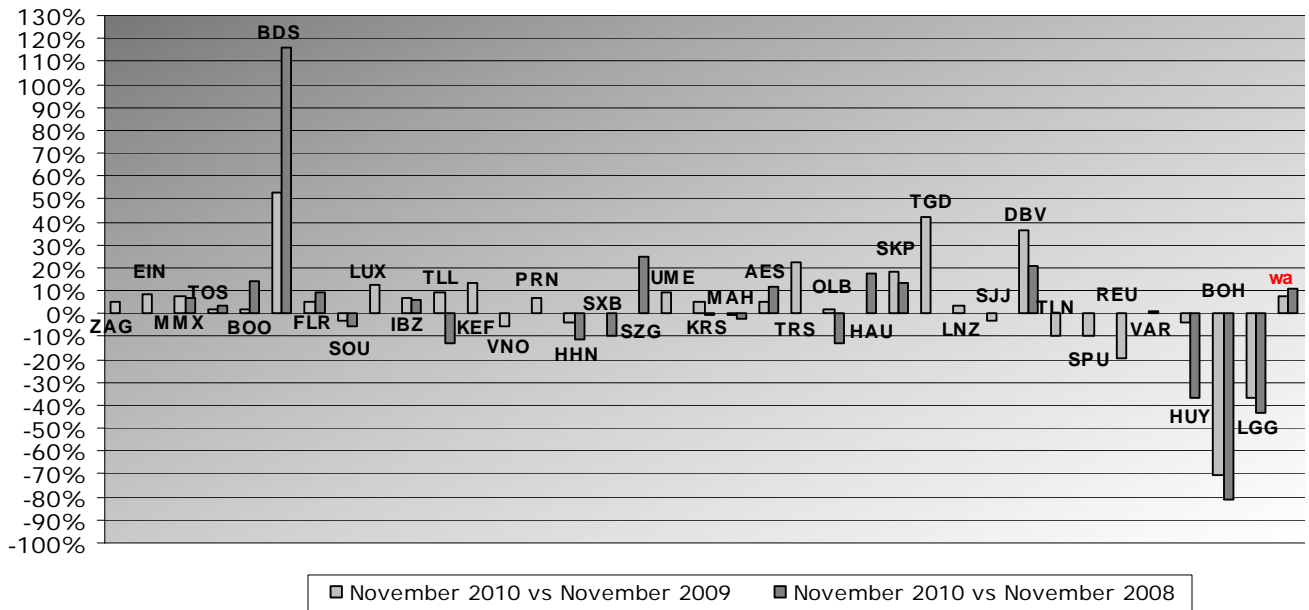
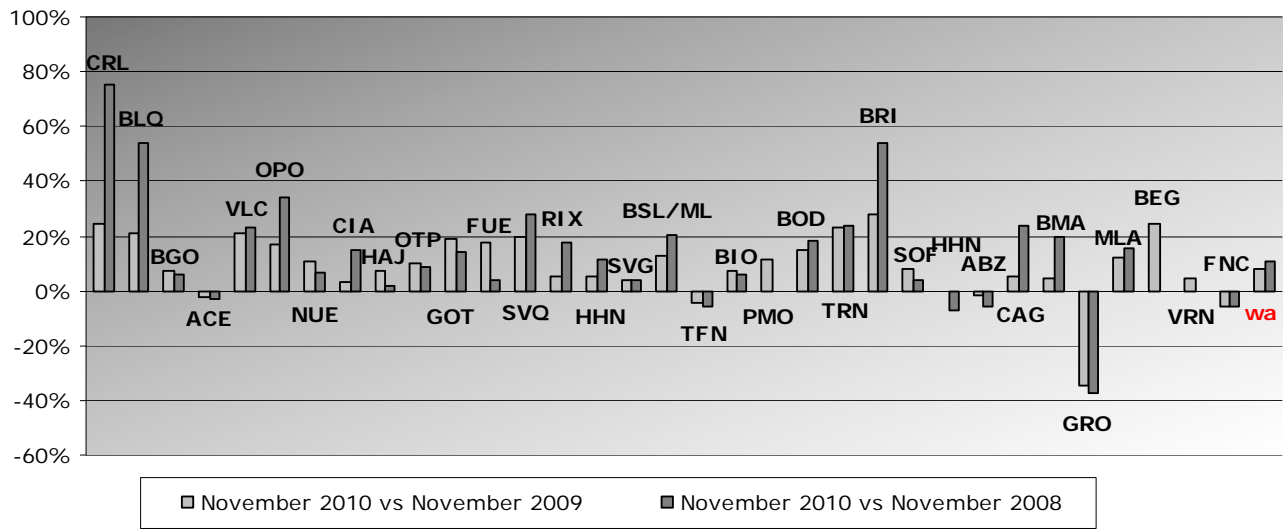
\*weighted average=SUM(%change\*pax)/SUM(pax)



**Group 4**  
**Airports welcoming less than 5 million passengers**  
**per year (percentage traffic variation November 2010 versus 2009 and 2008)**

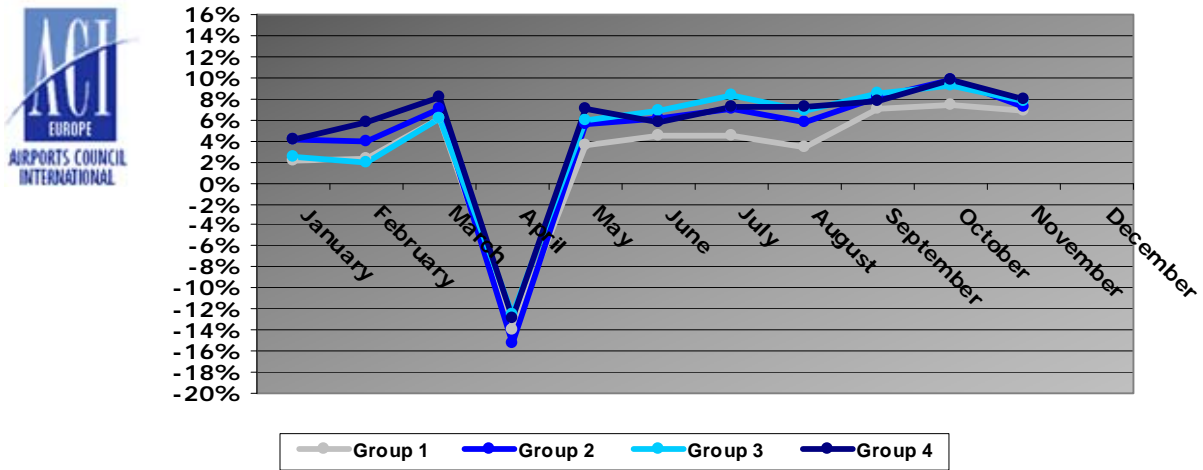
Airport	2010v2009 variation %	2010v2008 variation %
CRL	24,8%	75,4%
BLQ	21,2%	54,2%
BGO	7,3%	6,2%
ACE	-2,5%	-3,2%
VLC	20,8%	23,3%
OPO	17,1%	34,0%
NUE	10,6%	6,8%
CIA	3,5%	15,0%
HAI	7,0%	2,1%
OTP	10,2%	8,4%
GOT	19,1%	14,2%
FUE	17,7%	3,7%
SVQ	19,7%	27,6%
RIX	5,0%	17,7%
TRD	5,4%	11,1%
SVG	4,2%	4,0%
BSL/ML	12,9%	20,6%
TFN	-4,1%	-5,7%
BIO	7,4%	5,7%
PMO	11,3%	N/A
BOD	15,0%	17,9%
TRN	23,3%	23,7%
BRI	27,7%	53,8%
SOF	7,8%	4,2%
HHN	-0,6%	-7,1%
ABZ	-1,9%	-6,0%
CAG	5,0%	23,9%
BMA	4,6%	19,5%
GRO	-34,4%	-37,3%
MLA	12,4%	15,5%
BEG	24,4%	N/A
VRN	4,3%	N/A
FNC	-5,5%	-5,7%
ZAG	4,8%	N/A
EIN	8,2%	N/A
MMX	7,3%	7,2%
TOS	2,1%	3,2%
BOO	2,0%	14,1%
BDS	52,8%	116,1%
FLR	4,9%	9,1%
SOU	-3,2%	-5,7%
LUX	12,5%	N/A
IBZ	7,0%	5,7%
TLL	9,1%	-12,7%
KEF	13,2%	N/A
VNO	-5,3%	N/A
PRN	6,8%	N/A
LJU	-4,1%	-11,2%
SXB	0,3%	-9,9%
SZG	0,5%	24,8%
UME	8,9%	N/A
KRS	5,0%	-0,3%
MAH	-1,0%	-2,3%
AES	5,3%	11,5%
TRS	22,0%	N/A
OLB	2,2%	-12,8%
HAU	0,2%	17,3%
SKP	18,7%	13,7%
TGD	42,2%	N/A
SJJ	3,6%	N/A
LNZ	-3,4%	N/A
DBV	36,4%	20,9%
TLN	-9,6%	N/A
SPU	-9,3%	N/A
REU	-19,1%	N/A
VAR	1,2%	N/A
HUY	-4,3%	-36,7%
BOH	-70,2%	-81,5%
LGG	-36,9%	-43,5%
<b>wa*</b>	<b>8,0%</b>	<b>10,7%</b>

\*weighted average=SUM(%change\*pax)/SUM(pax)



## Year-to-date airport passenger trends

The graphic illustrates and compares the trends of the different airport Groups 1, 2, 3 and 4 for 2010.



The graphic compares the amount of total commercial passengers 2010 with 2009. The airports included, in this graphic, are: LHR, FRA, CDG, AMS, MAD, IST, LGW, FCO, MUC, BCN, ORY, STN, MAN, MXP, ZRH, CPH, ARN, DUB, OSL, BRU, VIE, DUS, ATH, PMI, AGP, DME, HEL, TXL, LIS, HAM, PRG.

