



Airport Traffic Report

March 2010

European passenger traffic up 6.9% during March 2010

The '**ACI EUROPE Airport Traffic Report - March 2010**' includes **113 airports** in total.




The overall **passenger** traffic at European airports increased by **6.9%** in **March 2010** compared with March 2009. The overall **freight** traffic among European airports increased **26.7%** in March 2010 when compared with the corresponding month in 2009. The overall figure for **movements** at European airports decreased **-0.1%** in March 2010 when compared with March 2009.




The accumulated figure for **passenger** traffic **January to March 2010** increased by **5.2%** compared with the corresponding period 2009. The accumulated figure for **freight** traffic during **January to March** increased by **22.6%** and **movements** decreased by **-1.1%** during the corresponding period when compared with 2009.




Airports welcoming more than 25 million passengers per year (Group 1), airports welcoming between 10 and 25 million passengers (Group 2), airports welcoming between 5 and 10 million passengers (Group 3) and airports welcoming less than 5 million passengers per year (Group 4) reported an average increase/decrease of **6.1%**, **7.1%**, **6.1%** and **8.0%** respectively when compared with March 2009. The same comparison of March 2010 with March 2008 demonstrates an average decrease of **-6.2%**, **-8.8%**, **-9.6%** and **-7.0%** respectively.




Examples of airports that experienced the highest increase in passenger traffic per group, when comparing March 2010 with March 2009, include:

- **Group 1 airports** – Istanbul (+**16.5%**), Munich (+**11.3%**), Barcelona (+**8.9%**) and Amsterdam (+**8.4%**)
- **Group 2 airports** – Antalya (+**42.8%**), Moscow DME (+**36.9%**), Copenhagen (+**17.2%**) and Dusseldorf (+**12.0%**)
- **Group 3 airports** – Moscow VKO (+**35.0%**), St Petersburg (+**28.9%**), Ankara (+**25.2%**) and Berlin SXF (+**15.0%**)
- **Group 4 airports** – Ohrid (+**70.6%**), Brindisi (+**46.0%**), Charleroi (+**43.0%**) and Bologna (+**33.4%**).

Airport		Passengers		Commercial movements		Freight	
		 March 2010		 March 2010		 March 2010	
LONDON	LHR	5226542	0,4%	37363	-6,5%	133399	29,6%
PARIS	CDG	4654929	2,9%	42040	-5,9%	183000	15,0%
FRANKFURT	FRA	4363662	8,3%	39104	2,9%	200314	37,1%
MADRID	MAD	4102389	5,7%	36867	-0,8%	33198	40,2%
AMSTERDAM	AMS	3472200	8,4%	31373	-0,4%	134089	27,6%
MUNICH	MUC	2874545	11,3%	31423	-4,8%	22809	32,8%
ROME	FCO	2784093	5,7%	26038	-1,9%	13285	25,5%
ISTANBUL	IST	2520503	16,5%	22048	7,1%	40552	36,9%
LONDON	LGW	2390518	3,0%	18696	-0,9%	10103	65,8%
BARCELONA	BCN	2284457	8,9%	22191	-5,6%	10345	46,0%
PARIS	ORY	2088877	4,1%	18851	0,2%	8910	12,8%
ZURICH	ZRH	1811437	9,7%	18868	3,7%	26439	24,0%
COPENHAGEN	CPH	1770816	17,2%	20888	6,0%	N/A	N/A
OSLO	OSL	1574793	6,7%	18136	-3,1%	4498	-4,6%
MILAN	MLX	1511723	9,3%	15500	2,8%	37106	33,0%
MOSCOW	DME	1510514	36,9%	15266	19,3%	11290	40,9%
DUBLIN	DUB	1493232	-11,6%	12542	-14,0%	8944	17,3%
VIENNA	VIE	1492135	9,0%	20448	3,2%	20452	38,2%
DUSSELDORF	DUS	1474274	12,0%	17448	4,4%	7810	61,0%
LONDON	STN	1470518	-4,2%	11810	-7,4%	18865	23,3%
STOCKHOLM	ARN	1426213	3,8%	16578	-6,1%	6246	5,1%
MOSCOW	SVO	1280690	32,4%	13170	10,3%	10498	32,3%
BRUSSELS	BRU	1276658	1,4%	17318	-4,5%	45873	20,7%
MANCHESTER	MAN	1263216	-7,0%	11680	-12,9%	10094	14,0%
BERLIN	TXL	1224850	5,8%	13262	2,4%	1738	31,7%
GENEVA	GVA	1194345	10,6%	11872	0,1%	3127	37,8%
ATHENS	ATH	1165395	10,8%	14741	2,7%	8052	-2,4%
HELSINKI	HEL	1146943	5,2%	15351	-1,8%	11720	23,2%
PALMA DE MALLORCA	PMI	1110753	-0,1%	10519	-1,9%	1444	7,3%
HAMBURG	HAM	1085644	8,6%	11932	4,1%	6678	18,8%
LISBON	LIS	1035432	9,5%	10797	3,2%	8281	23,0%
GRAN CANARIA	LPA	933745	7,9%	9054	4,4%	2273	3,4%
PRAGUE	PRG	859495	6,9%	12393	-1,6%	4000	37,5%
ANTALYA	AYT	850926	42,8%	6120	37,3%	701	51,7%
MALAGA	AGP	793086	0,0%	6754	-3,7%	268	-15,4%
COLOGNE	CGN	733153	7,8%	9855	4,8%	54646	18,9%
TENERIFE	TFS	705814	0,8%	4694	3,7%	405	-18,4%
STUTTGART	STR	674650	5,5%	8977	-2,5%	1931	46,6%
ALICANTE	ALC	674528	9,2%	5441	8,6%	296	13,0%
MILAN	LIN	673975	-4,8%	7980	-5,6%	1434	14,5%
EDINBURGH	EDI	671668	-3,3%	8405	-6,1%	1652	-25,6%
NICE	NCE	663800	-3,2%	8519	-2,9%	1374	60,9%
BIRMINGHAM	BHX	663172	-1,7%	7269	-8,2%	2047	140,5%
MOSCOW	VKO	661000	35,0%	7993	17,6%	2816	37,0%
WARSAW	WAW	636768	11,8%	10031	3,6%	3328	10,1%
LYON	LYS	630635	5,5%	10415	0,1%	3229	45,9%
MILAN	BGY	606667	14,9%	5171	4,8%	9394	6,4%
BERLIN	SXF	588175	15,0%	5153	9,9%	413	19,8%
BUDAPEST	BUD	584993	6,8%	7945	-2,6%	5159	14,8%
ANKARA	ESB	582702	25,2%	4722	18,9%	1255	-5,5%
TOULOUSE	TLS	546168	5,5%	7104	0,7%	5015	2,0%
MARSEILLE	MRS	533836	0,8%	8038	4,0%	5006	28,0%
ST PETERSBURG	LED	503647	28,9%	6806	13,2%	1550	14,4%
VENICE	VCE	485551	2,7%	5196	-4,1%	3237	32,9%
GLASGOW	GLA	475927	-9,3%	5469	-10,3%	447	131,6%
LANZAROTE	ACE	431841	6,5%	3652	4,9%	302	-10,1%
BOLOGNA	BLQ	421428	33,4%	5245	17,0%	2408	13,7%
BERGEN	BGO	400505	3,8%	5932	-4,6%	214	-5,5%
ROME	CIA	395813	0,5%	2856	-1,8%	1499	4,5%
HANOVER	HAJ	395303	3,1%	4610	-7,6%	420	106,9%
VALENCIA	VLC	390641	5,5%	5107	-6,5%	1190	34,7%
NAPLES	NAP	386452	5,9%	4230	-1,0%	97	-4,6%
NUREMBERG	NUE	386352	4,9%	5461	14,0%	737	4,2%
CHARLEROI	CRL	381023	43,0%	2799	52,2%	N/A	N/A
PORTO	OPO	380383	20,6%	4396	3,7%	2833	29,2%
SEVILLA	SVQ	364764	12,1%	3682	2,2%	450	-5,5%
GIRONA	GRO	363010	2,9%	2736	-2,1%	N/A	N/A
FUERTEVENTURA	FUE	350389	11,8%	3147	6,5%	157	-11,9%

Airport		Passengers		Commercial movements		Freight	
		 March 2010		 March 2010		 March 2010	
GOTHENBURG	GOT	346415	12,3%	5022	0,8%	4509	17,2%
RIGA	RIX	344602	25,5%	4976	14,0%	522	20,9%
TENERIFE	TFN	335209	5,8%	4966	1,8%	1587	11,0%
BILBAO	BIO	319051	11,2%	4113	4,1%	243	-2,3%
TURIN	TRN	311856	3,3%	3840	-11,5%	173	54,6%
TRONDHEIM	TRD	302445	0,6%	4196	-2,3%	145	-18,0%
STAVANGER	SVG	295363	1,5%	4261	-8,9%	253	-1,8%
BASEL	BSL	291715	4,4%	4409	4,2%	3703	42,3%
EAST MIDLANDS	EMA	271244	-18,8%	4567	-10,7%	24947	11,5%
BORDEAUX	BOD	270883	6,9%	3931	-0,4%	642	19,2%
HAHN	HHN	265522	4,2%	2927	2,7%	11695	88,3%
SOFIA	SOF	260452	4,6%	3354	0,0%	1151	-3,5%
FARO	FAO	259328	3,7%	2001	3,7%	19	-85,3%
BARI	BRI	246561	24,6%	2499	12,8%	18	-67,7%
CAGLIARI	CAG	230516	21,9%	2395	9,4%	166	-7,0%
ABERDEEN	ABZ	230457	-4,4%	7744	-6,3%	447	-17,5%
STOCKHOLM	BMA	212722	16,3%	4206	10,7%	23	53,3%
MALTA	MLA	206990	12,3%	1892	4,3%	1550	18,9%
SALZBURG	SZG	180203	10,1%	2070	5,7%	12	-36,0%
FUNCHAL	FNC	172741	-13,1%	1824	-2,0%	545	7,2%
KATOWICE	KTW	150116	-8,1%	1602	-10,1%	1219	143,8%
IBIZA	IBZ	146350	13,3%	2042	6,7%	196	-0,2%
TROMSOE	TOS	144423	5,0%	2553	-2,9%	210	10,0%
SOUTHAMPTON	SOU	142532	5,3%	3307	0,1%	3	-81,3%
MALMO	MMX	142219	8,7%	2108	3,8%	2723	27,1%
BODO	BOO	138223	2,4%	3043	-3,2%	100	-6,7%
FLORENCE	FLR	130945	6,2%	1875	-5,6%	12	-29,2%
PRESTWICK	PIK	123547	-17,7%	1080	-26,4%	927	-32,0%
LUXEMBOURG	LUX	120508	14,7%	3983	4,2%	62951	12,0%
VILNIUS	VNO	115245	27,2%	2217	39,8%	293	32,0%
TALLINN	TLL	110400	-3,0%	2166	-5,4%	523	-73,6%
BRINDISI	BDS	104615	46,0%	921	25,0%	6	51,2%
LJUBLJANA	LJU	87935	3,2%	2401	-4,2%	610	6,6%
MENORCA	MAH	84109	6,1%	1354	-3,6%	158	-18,3%
STRASBOURG	SXB	84102	-8,7%	2437	-4,9%	26	-10,3%
KRISTIANSAND	KRS	73858	2,4%	1595	-11,5%	33	-18,0%
AALESUND	AES	67972	1,2%	909	-1,2%	46	-40,9%
BOURNEMOUTH	BOH	58912	-24,1%	752	-20,8%	N/A	N/A
HAUGESUND	HAU	47951	16,2%	602	10,5%	20	-31,6%
REUS	REU	44770	-29,6%	407	-37,1%	N/A	N/A
SKOPJE	SKP	43514	12,4%	765	4,9%	175	-39,8%
DUBROVNIK	DBV	26033	-2,3%	339	0,9%	28	-23,1%
HUMBERSIDE	HUY	18784	-26,8%	1502	9,6%	93	0,0%
LIEGE	LGG	14356	14,1%	2558	22,5%	62506	63,8%
OHRID	OHD	2051	70,6%	16	33,3%	N/A	N/A

Airport		Passengers		Commercial movements		Freight	
		 January - March 2010		 January - March 2010		 January - March 2010	
London	LHR	14687912	1,5%	108552	-3,3%	352720	23,1%
Paris	CDG	12630741	1,4%	116533	-6,3%	N/A	N/A
Frankfurt	FRA	11343816	3,9%	105972	-0,2%	516079	33,2%
Madrid	MAD	10953715	6,2%	103135	0,0%	87109	28,8%
Amsterdam	AMS	9279338	4,9%	86945	-2,2%	353112	21,4%
Rome	FCO	7258578	8,5%	73071	-1,6%	34560	36,2%
Munich	MUC	7190684	3,2%	83218	-6,7%	57652	25,0%
Istanbul	IST	6922790	16,9%	62803	9,3%	107457	43,9%
London	LGW	6324522	0,4%	51755	-1,5%	24692	37,3%
Barcelona	BCN	5784002	5,4%	60200	-6,9%	25068	31,5%
Paris	ORY	5538439	-0,5%	50150	-4,4%	16110	8,1%
Zurich	ZRH	4956871	8,4%	53089	2,5%	70897	21,2%
Copenhagen	CPH	4587666	11,4%	56880	3,3%	N/A	N/A
Moscow	DME	4286707	35,8%	43843	20,5%	27767	34,0%
Oslo	OSL	4172903	6,0%	50272	-1,8%	12430	-4,9%
Milan	MPX	4048841	9,0%	43159	3,6%	97447	39,3%
London	STN	3924914	-4,7%	33637	-4,8%	49467	20,5%
Vienna	VIE	3891867	6,3%	56317	0,2%	53355	37,8%
Düsseldorf	DUS	3743219	7,8%	46046	1,7%	18828	43,2%
Stockholm	ARN	3704268	2,0%	44036	-6,3%	17537	5,6%
Moscow	SVO	3569151	28,5%	37559	8,3%	26930	37,2%
Brussels	BRU	3385843	2,7%	47458	-4,5%	110994	4,3%
Manchester	MAN	3345530	-10,4%	31675	-15,3%	26142	15,2%
Geneva	GVA	3245756	7,7%	33613	-1,0%	8231	26,5%
Athens	ATH	3167453	10,4%	41838	5,6%	21072	-7,1%
Berlin	TXL	3134908	3,7%	35067	-0,1%	4367	24,3%
Helsinki	HEL	3030815	1,2%	41749	-3,5%	31103	26,8%
Lisbon	LIS	2821484	7,7%	30822	1,2%	21643	20,5%
Hamburg	HAM	2723990	5,8%	32273	2,7%	17461	14,7%
Gran Canaria	LPA	2604946	3,6%	25730	0,5%	6279	-8,6%
Palma De Mallorca	PMI	2588641	-2,5%	26806	-4,8%	3702	-4,5%
Prague	PRG	2214535	7,0%	34015	-3,3%	10195	29,0%
Tenerife	TFS	2024145	1,3%	13646	3,0%	1206	-25,5%
Malaga	AGP	1939729	-1,4%	18245	-4,2%	741	-19,2%
Antalya	AYT	1913200	35,7%	14260	28,4%	1718	52,4%
Cologne	CGN	1905875	5,0%	26466	1,5%	144566	14,0%
Moscow	VKO	1811840	35,8%	22782	14,9%	7030	35,2%
Milan	LIN	1789331	-1,4%	22387	-4,0%	3513	4,0%
Edinburgh	EDI	1767958	-2,4%	23056	-6,5%	4745	-23,3%
Birmingham	BHX	1733704	-4,9%	19725	-10,2%	4592	108,1%
Warsaw	WAW	1716611	7,7%	27955	1,5%	8643	7,6%
Nice	NCE	1706353	-3,6%	22368	-4,8%	3531	48,2%
Berlin	SXF	1696935	10,6%	16071	5,7%	1305	33,4%
Stuttgart	STR	1695689	-0,1%	23741	-6,5%	5147	38,7%
Lyon	LYS	1659277	0,1%	27553	-4,9%	8189	32,2%
Alicante	ALC	1647006	5,3%	14151	2,8%	780	7,4%
Milan	BGY	1624776	14,0%	14925	7,1%	25128	5,2%
Budapest	BUD	1534833	5,0%	21754	-4,7%	13389	18,8%
Marseille	MRS	1461110	4,5%	21935	3,2%	13091	19,8%
Toulouse	TLS	1457924	1,6%	18933	-3,3%	13205	-3,5%
Venice	VCE	1296871	4,1%	14618	-3,9%	8490	27,6%
Glasgow	GLA	1266963	-8,7%	15074	-9,9%	852	88,1%
Lanzarote	ACE	1180998	4,5%	10274	2,2%	825	-13,2%
Bologna	BLQ	1084751	29,2%	14272	14,7%	6283	7,6%
Bergen	BGO	1076696	3,0%	16761	-2,1%	598	-1,4%
Rome	CIA	1052980	0,9%	8134	-0,3%	4195	4,0%
Porto	OPO	1040036	17,5%	12425	0,8%	8270	27,8%
Naples	NAP	1010513	6,6%	11658	-2,4%	252	18,6%
Nuremberg	NUE	993519	0,6%	13907	4,2%	2170	13,9%
Charleroi	CRL	983688	36,5%	7650	49,2%	2	1236,7%
Valencia	VLC	977533	3,9%	13827	-9,5%	2743	19,3%
Hanover	HAJ	942767	-1,0%	11961	-11,1%	1442	62,8%
Girona	GRO	933868	-1,1%	7802	-2,2%	5	-19,3%
Fuerteventura	FUE	927770	4,0%	8527	0,0%	439	-13,5%
Tenerife	TFN	916562	4,0%	13463	-0,8%	3998	-3,2%
Riga	RIX	914386	21,0%	13912	11,1%	1426	24,9%
Gothenburg	GOT	899523	7,6%	13240	-0,3%	11674	26,7%
Sevilla	SVQ	891249	6,0%	10009	-2,5%	1185	3,4%

Airport		Passengers		Commercial movements		Freight	
		 January - March 2010		 January - March 2010		 January - March 2010	
Turin	TRN	859528	4,5%	10758	-13,3%	334	30,9%
Trondheim	TRD	817336	3,0%	11523	-1,7%	415	-16,7%
Bilbao	BIO	809133	8,8%	11042	2,2%	607	-9,0%
Stavanger	SVG	799848	2,9%	11908	-6,5%	723	2,0%
Basel	BSL	757774	4,4%	12009	4,2%	9535	29,9%
Sofia	SOF	756367	1,6%	9712	-1,0%	2999	-10,5%
Bucharest	OTP	745094	2,7%	11532	-0,6%	3903	2,3%
East Midlands	EMA	714789	-22,2%	12666	-14,0%	65799	6,0%
Bordeaux	BOD	701891	3,1%	10300	-5,3%	1745	5,3%
Hahn	HHN	688536	-1,3%	7676	-5,4%	25980	41,6%
Bari	BRI	658470	27,9%	7025	11,8%	48	-49,0%
Cagliari	CAG	612644	17,9%	6837	8,2%	428	-9,3%
Aberdeen	ABZ	608717	-7,4%	21222	-8,2%	1162	-14,1%
Faro	FAO	580152	0,3%	4948	1,0%	54	-66,2%
Stockholm	BMA	525616	12,2%	10398	9,7%	58	41,5%
Malta	MLA	504358	9,1%	5074	3,6%	3957	3,6%
Funchal	FNC	470959	-8,0%	5012	-2,6%	1448	2,5%
Tromsøe	TOS	384130	5,4%	7243	-1,7%	509	-3,9%
Malmö	MMX	371942	6,6%	5474	5,1%	7037	15,4%
Bodo	BOO	370903	8,2%	8710	0,1%	288	-12,4%
Southampton	SOU	352429	1,0%	8582	-2,2%	22	-48,8%
Florence	FLR	351325	4,5%	5360	-4,8%	43	20,8%
Ibiza	IBZ	337628	6,9%	5205	-3,1%	511	-4,9%
Luxembourg	LUX	308994	8,4%	11002	0,6%	164569	8,8%
Vilnius	VNO	289362	11,3%	5863	24,5%	771	27,9%
Tallinn	TLL	285151	-5,1%	5968	-3,4%	4511	-15,6%
Brindisi	BDS	265802	39,9%	2484	9,9%	25	23,1%
Ljubljana	LJU	239261	0,5%	6566	-7,1%	1615	8,5%
Strasbourg	SXB	223797	-7,2%	6440	-8,0%	70	-6,7%
Menorca	MAH	204178	3,0%	3612	-7,7%	455	-12,9%
Kristiansand	KRS	197282	0,6%	4546	-9,2%	90	-16,5%
Aalesund	AES	181844	2,1%	2522	-3,5%	137	-38,4%
Haugesund	HAU	130083	18,5%	1746	20,7%	58	-29,2%
Skopje	SKP	123096	8,7%	2200	1,1%	451	-33,3%
Reus	REU	104079	-37,1%	1019	-43,9%	13	1652,0%
Dubrovnik	DBV	58447	-3,0%	811	0,4%	78	-16,6%
Liege	LGG	39488	4,4%	7016	21,6%	170182	62,5%
Ohrid	OHD	6256	69,6%	54	17,4%	N/A	N/A

----- Preliminary traffic figures -----

Total commercial passengers

International passengers (enplaned + deplaned) + **domestic passengers** (enplaned + deplaned) + **direct transit passengers** (passengers who arrive at and depart from the airport on a flight bearing the same number. They are counted only ONCE).

Commercial movements

Landing or take off of an aircraft operating a scheduled or non scheduled commercial service.

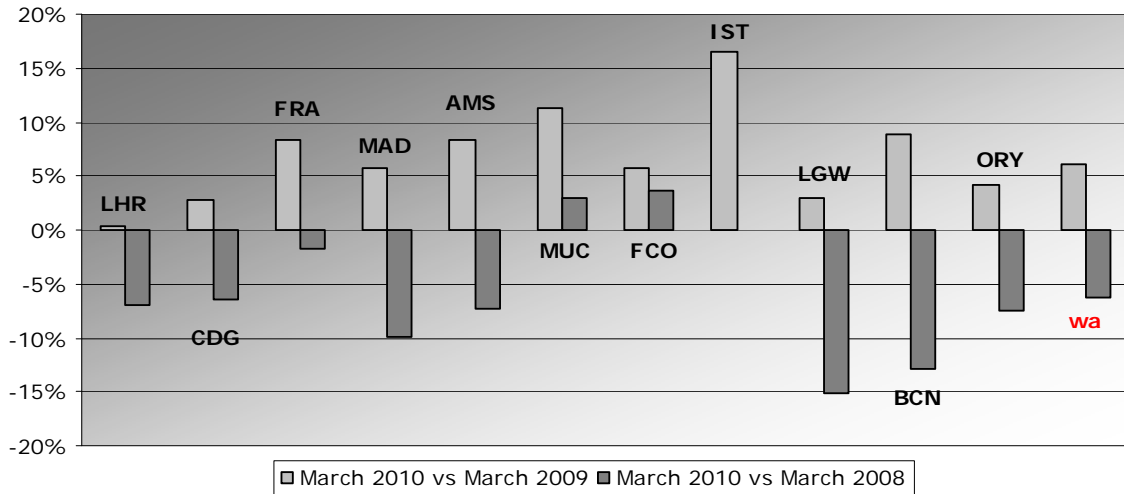
Freight

Freight loaded and unloaded (arriving or departing) at the airport. Freight comprises goods, newspapers, diplomatic bags, parcel post and express parcel.

Group 1
Airports welcoming more than 25 million passengers per year
(percentage traffic variation March 2010 versus 2009 and 2008)

Airport	2010v2009 variation %	2010v2008 variation %
LHR	0,4%	-7,0%
CDG	2,9%	-6,5%
FRA	8,3%	-1,7%
MAD	5,7%	-9,9%
AMS	8,4%	-7,3%
MUC	11,3%	3,0%
FCO	5,7%	3,7%
IST	16,5%	N/A
LGW	3,0%	-15,2%
BCN	8,9%	-12,9%
ORY	4,1%	-7,5%
wa*	6,1%	-6,2%

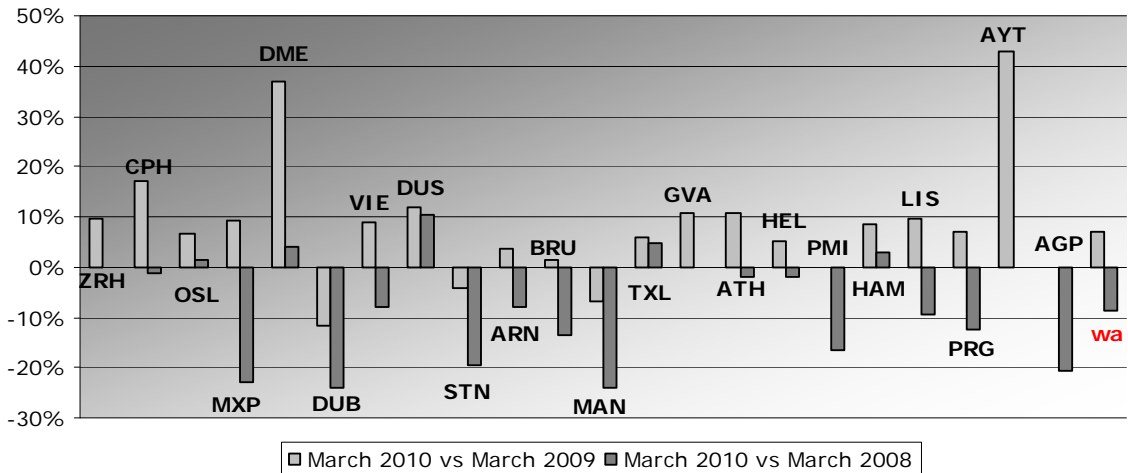
*weighted average = $\text{SUM}(\% \text{change} * \text{pax}) / \text{SUM}(\text{pax})$



Group 2
Airports welcoming between 10 and 25 million passengers
per year (percentage traffic variation March 2010 versus 2009 and 2008)

Airport	2010v2009 variation %	2010v2008 variation %
ZRH	9,7%	0,0%
CPH	17,2%	-1,1%
OSL	6,7%	1,3%
MXP	9,3%	-23,0%
DME	36,9%	4,0%
DUB	-11,6%	-23,9%
VIE	9,0%	-8,0%
DUS	12,0%	10,2%
STN	-4,2%	-19,4%
ARN	3,8%	-8,0%
BRU	1,4%	-13,7%
MAN	-7,0%	-24,2%
TXL	5,8%	4,9%
GVA	10,6%	N/A
ATH	10,8%	-2,1%
HEL	5,2%	-1,9%
PMI	-0,1%	-16,5%
HAM	8,6%	2,9%
LIS	9,5%	-9,3%
PRG	6,9%	-12,6%
AYT	42,8%	N/A
AGP	0,0%	-20,8%
wa*	7,1%	-8,8%

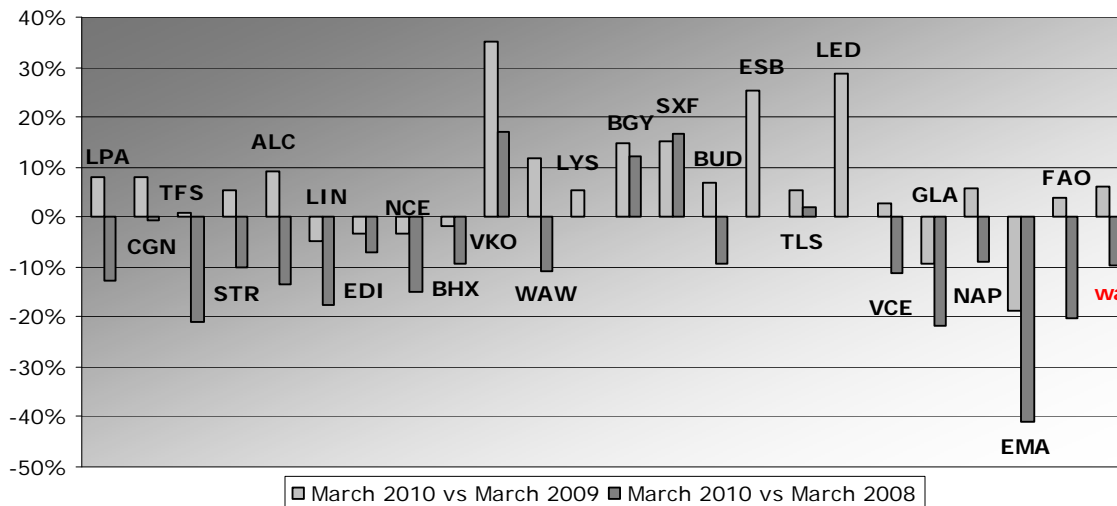
*weighted average=SUM(%change*pax)/SUM(pax)



Group 3
Airports welcoming between 5 and 10 million passengers
per year (percentage traffic variation March 2010 versus 2009 and 2008)

Airport	2010v2009 variation %	2010v2008 variation %
LPA	7,9%	-12,6%
CGN	7,8%	-0,8%
TFS	0,8%	-21,1%
STR	5,5%	-10,2%
ALC	9,2%	-13,5%
LIN	-4,8%	-17,6%
EDI	-3,3%	-7,1%
NCE	-3,2%	-14,9%
BHX	-1,7%	-9,2%
VKO	35,0%	17,1%
WAW	11,8%	-10,9%
LYS	5,5%	N/A
BGY	14,9%	12,1%
SXF	15,0%	16,7%
BUD	6,8%	-9,4%
ESB	25,2%	N/A
TLS	5,5%	2,0%
LED	28,9%	N/A
VCE	2,7%	-11,2%
GLA	-9,3%	-21,8%
NAP	5,9%	-8,9%
EMA	-18,8%	-41,1%
FAO	3,7%	-20,1%
wa*	6,1%	-9,6%

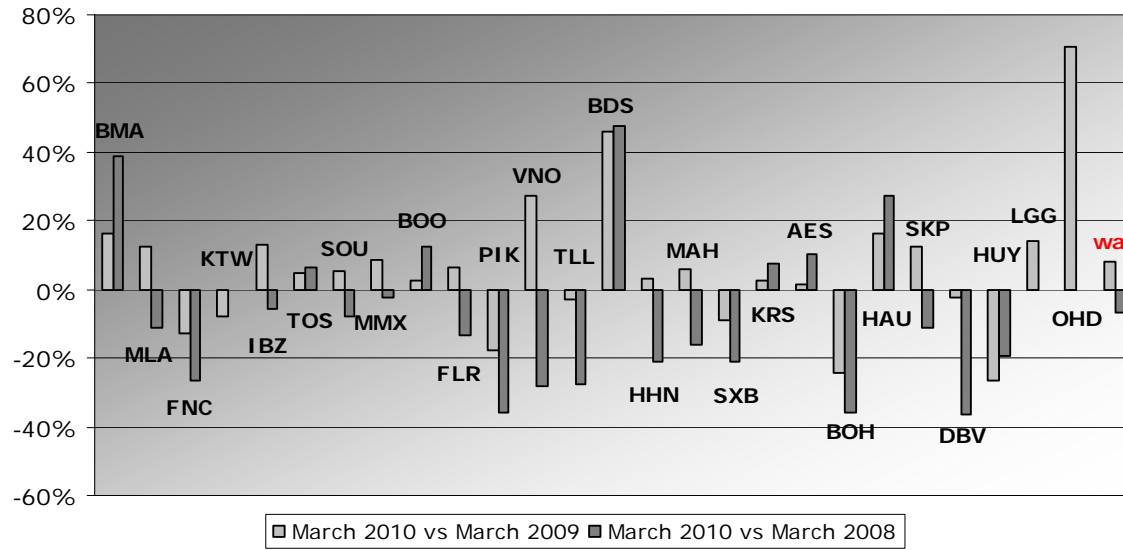
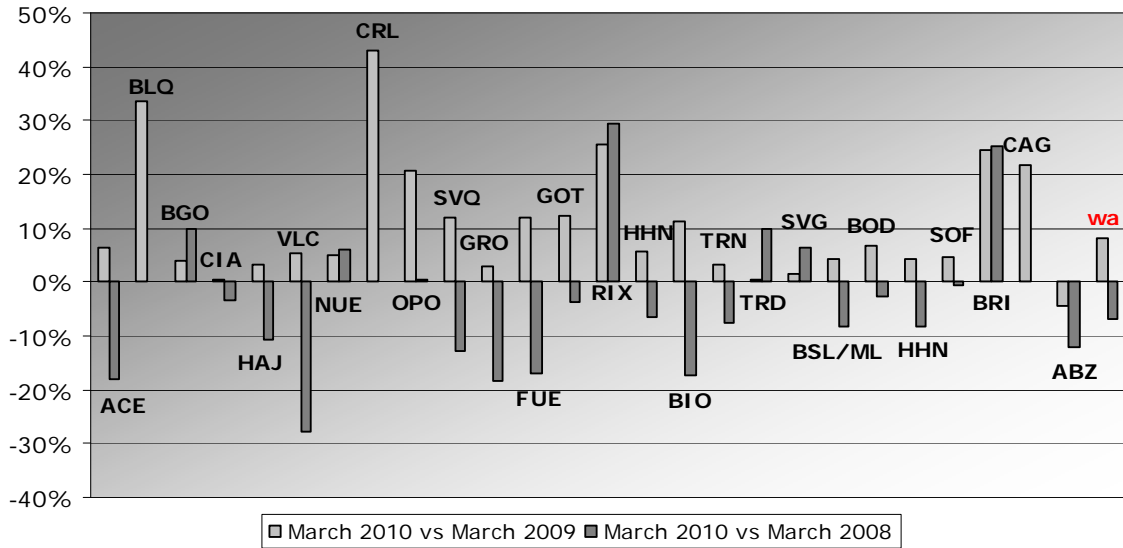
*weighted average=SUM(%change*pax)/SUM(pax)



Group 4
Airports welcoming less than 5 million passengers
per year (percentage traffic variation March 2010 versus 2009 and 2008)

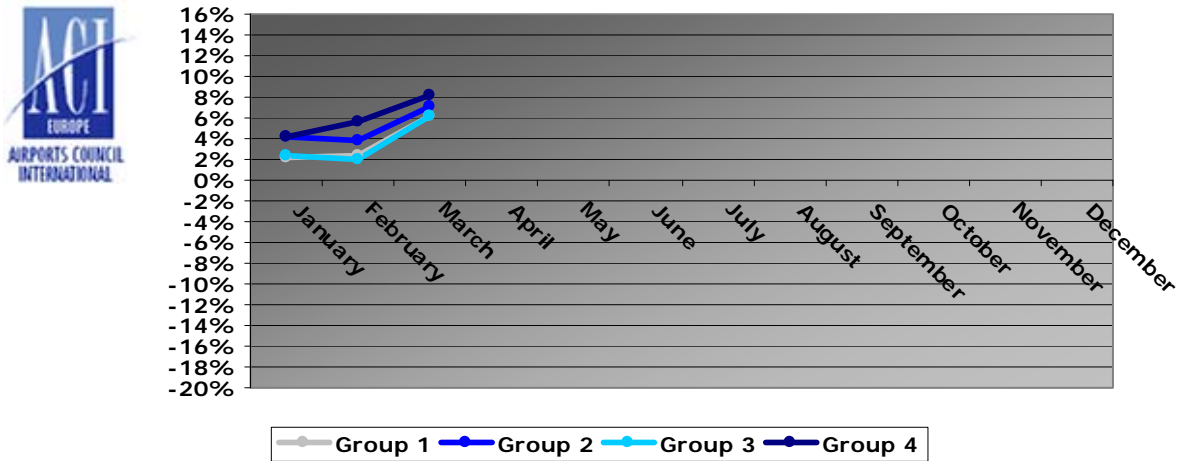
Airport	2010v2009 variation %	2010v2008 variation %
ACE	6,5%	-18,1%
BLQ	33,4%	N/A
BGO	3,8%	9,9%
CIA	0,5%	-3,4%
HAJ	3,1%	-10,8%
VLC	5,5%	-27,7%
NUE	4,9%	6,0%
CRL	43,0%	N/A
OPO	20,6%	0,5%
SVQ	12,1%	-12,9%
GRO	2,9%	-18,4%
FUE	11,8%	-16,9%
GOT	12,3%	-3,7%
RIX	25,5%	29,6%
TFN	5,8%	-6,5%
BIO	11,2%	-17,2%
TRN	3,3%	-7,7%
TRD	0,6%	9,8%
SVG	1,5%	6,5%
BSL/ML	4,4%	-8,2%
BOD	6,9%	-2,7%
HHN	4,2%	-8,2%
SOF	4,6%	-0,7%
BRI	24,6%	25,4%
CAG	21,9%	N/A
ABZ	-4,4%	-12,1%
BMA	16,3%	39,1%
MLA	12,3%	-10,9%
FNC	-13,1%	-26,6%
KTW	-8,1%	N/A
IBZ	13,3%	-5,6%
TOS	5,0%	6,5%
SOU	5,3%	-7,6%
MMX	8,7%	-2,4%
BOO	2,4%	12,3%
FLR	6,2%	-13,6%
PIK	-17,7%	-35,8%
VNO	27,2%	-28,4%
TLL	-3,0%	-27,6%
BDS	46,0%	47,7%
LJU	3,2%	-21,1%
MAH	6,1%	-16,1%
SXB	-8,7%	-21,1%
KRS	2,4%	7,3%
AES	1,2%	10,4%
BOH	-24,1%	-35,9%
HAU	16,2%	27,2%
SKP	12,4%	-11,3%
DBV	-2,3%	-36,6%
HUY	-26,8%	-19,3%
LGG	14,1%	-0,3%
OHD	70,6%	N/A
wa*	8,1%	-7,0%

*weighted average = $\text{SUM}(\% \text{change} * \text{pax}) / \text{SUM}(\text{pax})$



Year-to-date airport passenger trends

The graphic illustrates and compares the trends of the different airport Groups 1, 2, 3 and 4 for 2010.



The graphic compares the amount of total commercial passengers 2010 with 2009. The airports included, in this graphic, are: LHR, FRA, CDG, AMS, MAD, LGW, FCO, MUC, BCN, ORY, STN, MAN, MXP, ZRH, CPH, ARN, DUB, OS L, BRU, VIE, DUS, ATH, PMI, AGP, DME, HEL, TXL, LIS, HAM, PRG.

