



ACI EUROPE Airport Traffic Report

JULY 2011

European airport traffic contrast continues during July

Summer traffic figures for Europe's airports released today reveal an ongoing contrast between European airport passenger and freight traffic during July. Following a similar trend in June, the overall **passenger** traffic at European airports increased by **+6.9%** in **July 2011** compared with July 2010, while the overall **freight** traffic among European airports was flat at just **+0.3%** for the same period when compared with the corresponding month in 2010. The overall figure for **movements** at European airports increased **+2.8%** in July 2011 when compared with July 2010.

The accumulated figure for **passenger** traffic **January to July 2011** increased by **+9.0%** compared with the corresponding period 2010. The accumulated figure for **freight** traffic during **January to July** increased by **+3.2%** and **movements** increased by **+5.3%** during the corresponding period when compared with 2010.

In traffic figures specifically relating to the month of July, airports welcoming more than 25 million passengers per year (Group 1), airports welcoming between 10 and 25 million passengers (Group 2), airports welcoming between 5 and 10 million passengers (Group 3) and airports welcoming less than 5 million passengers per year (Group 4) reported an average increase of **+6.8%**, **+7.7%**, **+6.8%** and **+5.5%** respectively when compared with July 2010. The same comparison of July 2011 with July 2009 demonstrates an average increase of **+11.5%**, **+16.9%**, **+17.0%** and **+15.0%** respectively.

Examples of airports that experienced the highest increase in passenger traffic per group, when comparing July 2011 with July 2010, include:

- **Group 1 airports** – Barcelona (**+21.3%**), Istanbul IST (**+19.4%**), Amsterdam (**+8.9%**) and Munich (**+7.4%**)
- **Group 2 airports** – Moscow DME (**+17.9%**), Istanbul SAW (**+17.0%**) Helsinki (**+16.9%**) and Moscow SVO (**+16.1%**)
- **Group 3 airports** – Venice (**+40.0%**), Kiev (**+19.8%**), Tenerife TFS (**+18.0%**) and Porto (**+14.4%**)
- **Group 4 airports** – Ohrid (**+122.0%**), Skellefteå (**+51.2%**), Tallinn (**+39.3%**) and Malmo (**+30.8%**)

The '**ACI EUROPE Airport Traffic Report - July 2011**' includes **167 airports** in total.

Group 1		Group 2		Group 3		Group 4	
Over 25 million pax		Between 25 and 15 million pax		Between 5 and 10 million pax		Less than 5 million pax	
2011/2010	2011/2009	2011/2010	2011/2009	2011/2010	2011/2009	2011/2010	2011/2009
6,8%	11,5%	7,7%	16,9%	6,8%	17,0%	5,5%	15,0%

Executive Summary

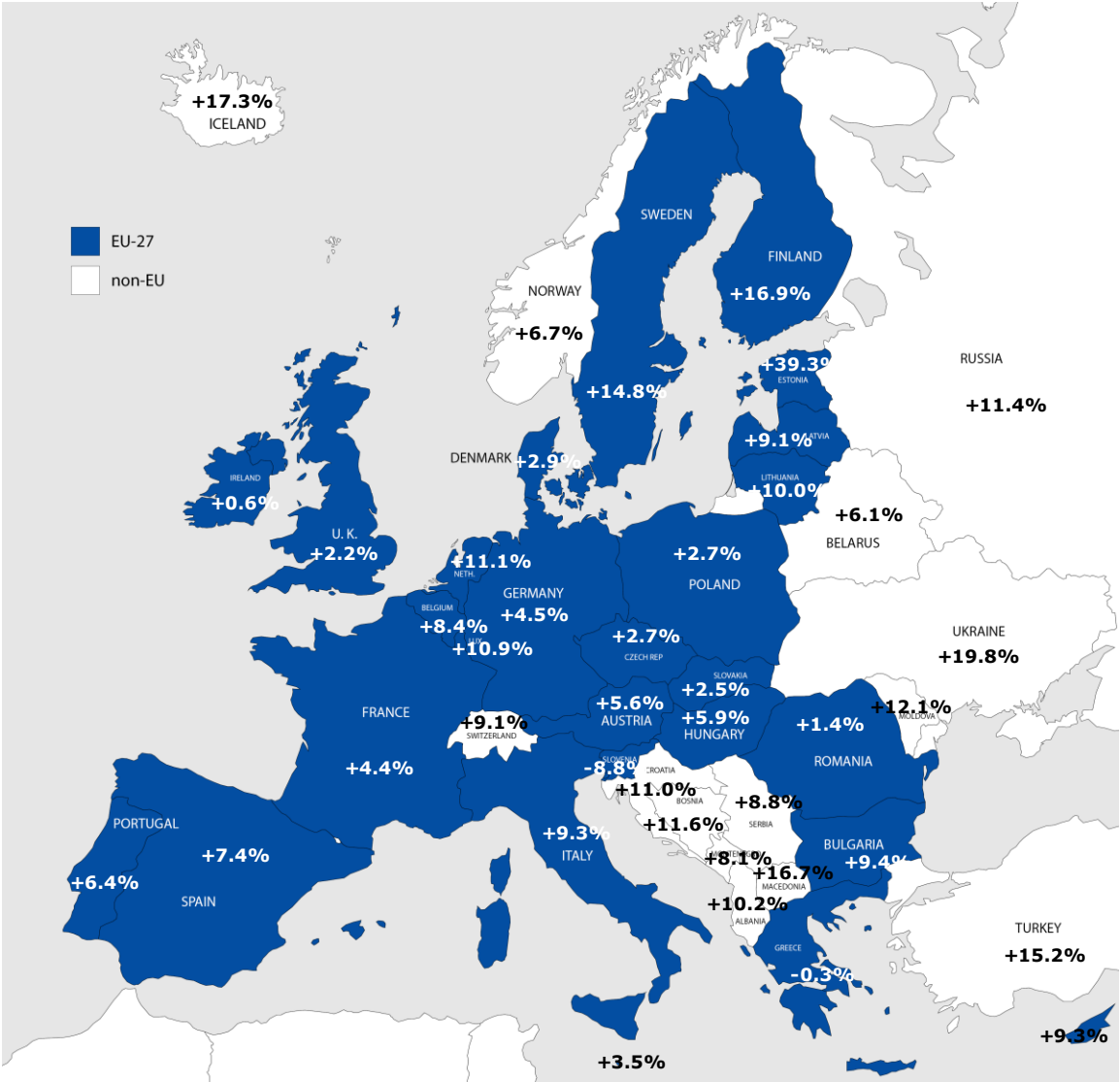
	Month 2011/2010	Month 2011/2009	Month 2011/2008	YTD	YTD 2011/2009	YTD 2011/2008
Total PAX	+6.9%	+14.7%	+8.9%	+9.0%	+11.1%	+3.0%
EU airports	+5.7%	-	-	-	-	-
Non-EU airports	+11.9%	-	-	-	-	-
Freight	+0.3%	+17.5%	+4.3%	+3.4%	+26.4%	+3.2%
Movements (total)	+2.8%	+6.4%	-2.2%	+5.3%	+3.5%	-4.7%
PAX + Freight Combined	+2.9%	-	-	-	-	-
Cargo Only	-4.7%	-	-	-	-	-

Passenger Analysis

	Month 2011/2010	Month 2011/2009	Month 2011/2008	YTD	YTD 2011/2009	YTD 2011/2008
Total PAX	+6.9%	+14.7%	+8.9%	+9.0%	+11.1%	+3.0%
International	+7.8%	+15.9%	+9.8%	+10.0%	+12.1%	+4.1%
Domestic	+4.0%	+10.5%	+7.2%	+6.3%	+8.2%	+1.7%
Transit*	-4.0%	-0.6%	-35.1%	-2.5%	-7.2%	-38.8%

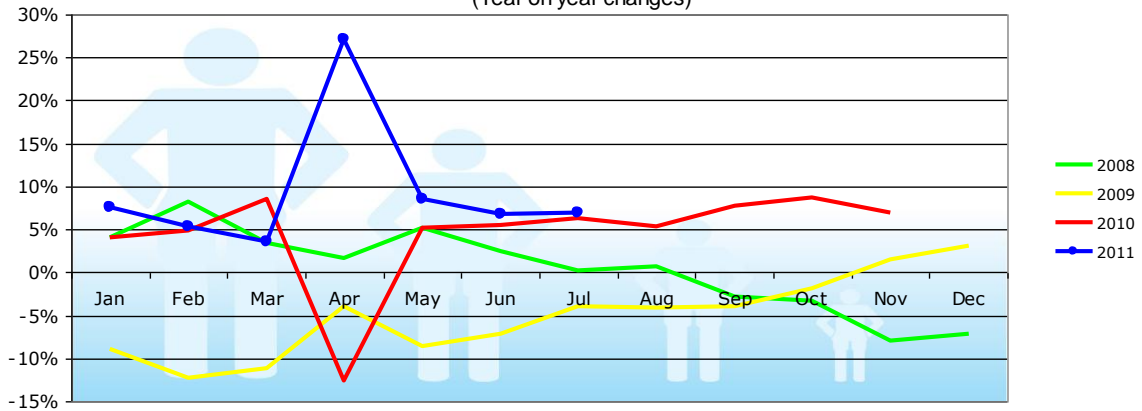
* Transit passengers refers exclusively to passengers that come to an airport and leave on the same flight with the same flight number.

Passenger Development European Countries

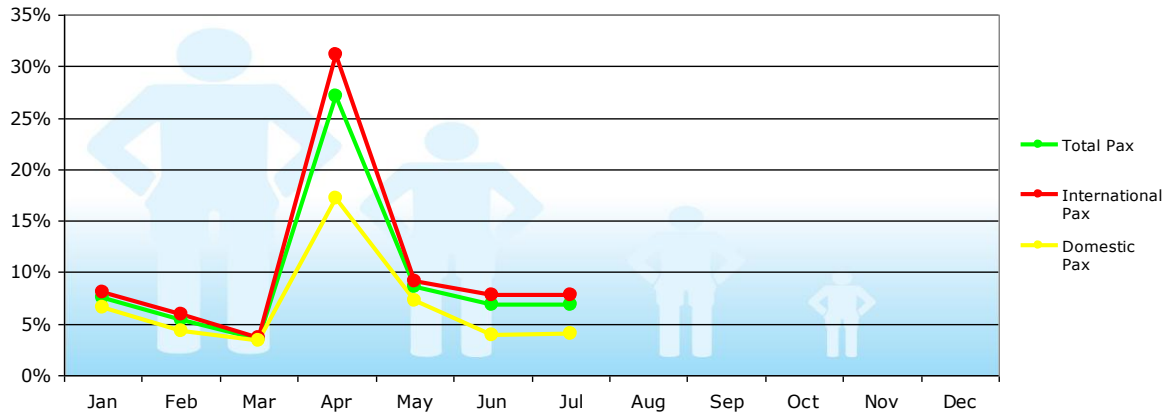


Total Passenger Development

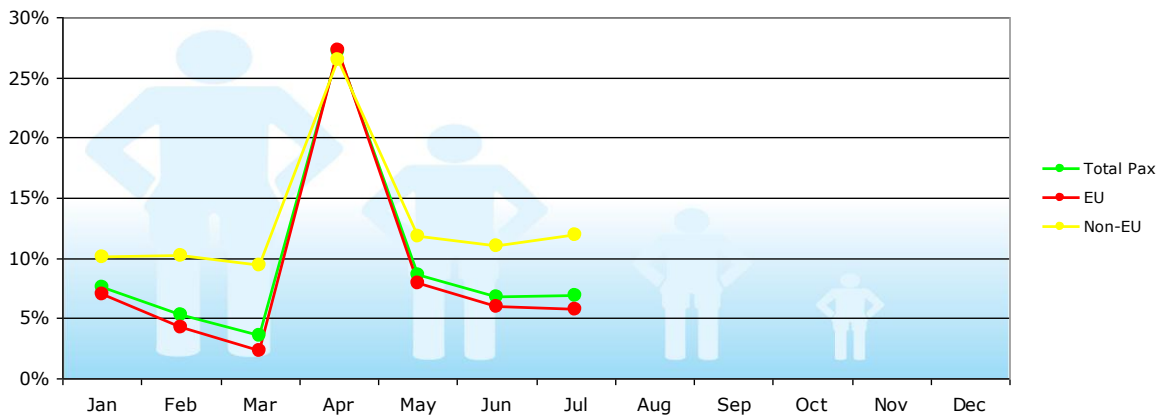
(Year on year changes)



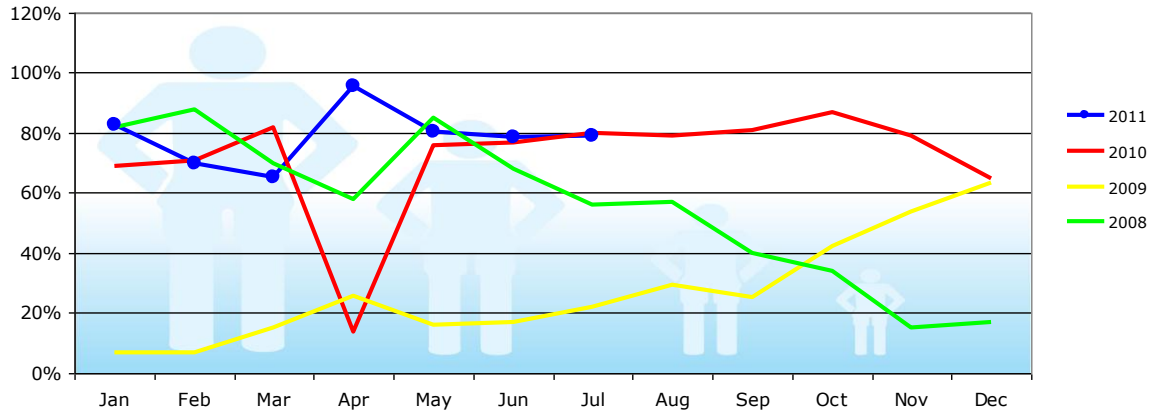
International & Domestic Passengers



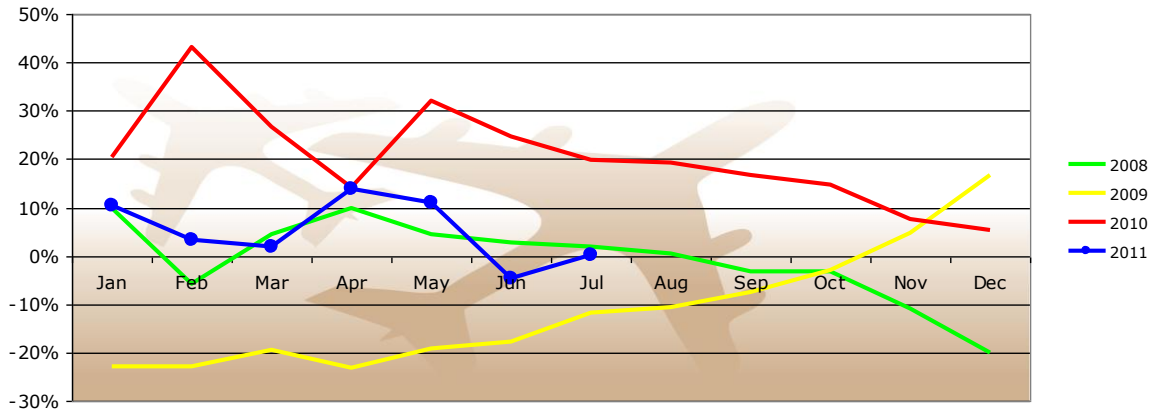
EU/Non-EU Airports Passenger Traffic



Percentage of Airports Increasing Traffic



Total Freight Development



Group 1		Group 2		Group 3		Group 4	
Over 25 million pax		Between 10 and 15 million pax		Between 5 and 10 million pax		Less than 5 million pax	
2011/2010	2011/2009	2011/2010	2011/2009	2011/2010	2011/2009	2011/2010	2011/2009
6,8%	11,5%	7,7%	16,9%	6,8%	17,0%	5,5%	15,0%

CITY	CODE	Passengers		Movements		Freight		
		July		July		July		
		2011/2010	2011/2009	2011/2010	2011/2010	2011/2010	2011/2010	
1 London	LHR	6877384	2,3%	6,0%	41596	0,4%	128103	-1,5%
2 Paris	CDG	6132084	4,0%	7,4%	45628	0,5%	N/A	N/A
3 Frankfurt	FRA	5557988	5,2%	13,4%	41797	1,7%	185840	0,2%
4 Amsterdam	AMS	5156990	8,9%	13,6%	39556	6,8%	130592	0,3%
5 Madrid	MAD	4896423	-0,4%	1,6%	37901	-2,1%	32923	9,5%
6 Rome	FCO	3879480	6,5%	15,0%	30555	1,1%	13653	-1,0%
7 Antalya	AYT	3843012	12,8%	36,9%	22559	10,5%	656	-7,7%
8 Istanbul	IST	3814485	19,4%	26,4%	28534	15,2%	44358	18,6%
9 London	LGW	3634713	5,8%	2,6%	23938	2,7%	7260	-24,1%
10 Munich	MUC	3629125	7,4%	19,3%	34538	1,4%	24158	-1,4%
11 Barcelona	BCN	3606358	21,3%	27,5%	28364	10,3%	8450	-5,4%
12 Palma De Mallorca	PMI	3402906	11,8%	14,2%	23833	8,8%	1581	-6,2%
13 Moscow	DME	2912932	17,9%	39,5%	24071	16,3%	14058	25,3%
14 Paris	ORY	2762221	6,0%	9,0%	20503	2,7%	N/A	N/A
15 Moscow	SVO	2465538	16,1%	56,9%	19634	12,8%	10207	-3,1%
16 Zurich	ZRH	2446911	8,6%	14,9%	21606	3,5%	24432	-31,1%
17 Copenhagen	CPH	2279365	2,9%	14,6%	21009	1,1%	N/A	N/A
18 Vienna	VIE	2154309	6,0%	18,0%	21818	-2,1%	14903	-8,1%
19 Manchester	MAN	2139078	5,7%	4,4%	15646	3,3%	9671	-9,2%
20 Düsseldorf	DUS	2053934	5,1%	9,5%	19425	2,7%	7230	-16,8%
21 Dublin	DUB	2044501	0,8%	-3,5%	14940	-1,3%	7893	-10,9%
22 Brussels	BRU	2030732	9,3%	11,6%	19463	1,7%	34450	-7,3%
23 Oslo	OSL	1971256	8,0%	17,3%	17087	2,0%	5485	48,0%
24 Milan	MXP	1969070	2,5%	13,5%	17518	-2,0%	40381	3,4%
25 London	STN	1880009	-7,3%	-13,9%	12907	-8,7%	16897	-5,9%
26 Athens	ATH	1692046	-0,3%	-8,2%	16163	-3,8%	7030	-11,8%
27 Stockholm	ARN	1679725	12,9%	23,9%	14556	10,4%	4994	-24,2%
28 Berlin	TXL	1586769	10,8%	23,7%	14083	2,1%	2363	19,3%
29 Lisbon	LIS	1566951	5,4%	12,7%	13471	-0,6%	8343	-5,4%
30 Malaga	AGP	1523480	3,2%	13,6%	11541	0,5%	295	-5,9%
31 Istanbul	SAW	1487592	17,0%	123,4%	11776	17,5%	2686	28,6%
32 Helsinki	HEL	1392427	16,9%	24,7%	14425	10,5%	12674	-2,2%
33 Prague	PRG	1324531	2,7%	0,9%	14178	-3,3%	5247	14,0%
34 Hamburg	HAM	1305163	2,8%	10,7%	12143	-3,1%	5069	-10,5%
35 Geneva	GVA	1237276	10,1%	18,1%	11386	4,5%	4144	17,0%
36 Nice	NCE	1218501	8,0%	7,3%	18499	6,7%	1113	-19,1%
37 Alicante	ALC	1173903	6,8%	11,1%	8275	4,7%	237	-19,9%
38 Ibiza	IBZ	1066351	11,6%	26,1%	9800	13,7%	351	-41,6%
39 Venice	VCE	1026502	40,0%	46,4%	8544	25,7%	3842	8,8%
40 London	LTN	1021421	9,0%	4,2%	8174	4,4%	2308	-12,5%
41 Warsaw	WAW	996101	2,2%	9,5%	11439	-1,9%	3451	-6,8%
42 Edinburgh	EDI	992775	3,3%	3,8%	10118	-0,3%	1344	-16,7%
43 Stuttgart	STR	984733	3,8%	10,6%	9798	-3,0%	1605	-12,1%
44 Budapest	BUD	949072	5,9%	9,2%	10184	3,9%	5793	2,7%
45 Birmingham	BHX	938999	1,1%	-3,1%	8159	-5,5%	1582	-29,2%
46 Moscow	VKO	933567	-13,0%	11,4%	10386	-1,3%	3362	5,8%
47 Izmir	ADB	927585	10,9%	37,4%	6457	8,6%	1427	-14,2%
48 Milan	LIN	918080	10,6%	9,9%	8706	2,2%	1505	-1,8%
49 Kiev	KBP	907895	19,8%	38,3%	9106	7,8%	2685	18,6%
50 Milan	BGY	861445	8,8%	15,4%	6521	6,5%	9611	-0,1%
51 Gran Canaria	LPA	852695	13,2%	18,8%	8583	8,0%	1895	1,7%
52 Ankara	ESB	845040	8,9%	42,7%	6968	19,9%	1244	1,6%
53 Lyon	LYS	838703	3,3%	11,1%	10187	-2,0%	2378	-19,7%
54 Faro	FAO	798522	3,1%	15,7%	5453	0,9%	27	-26,0%
55 Glasgow	GLA	796053	0,6%	-2,9%	6917	-4,7%	125	-43,6%
56 Marseille	MRS	777538	-5,2%	1,5%	8970	-4,5%	4457	8,4%
57 Larnaca	LCA	754477	6,7%	12,1%	5734	6,7%	2689	-11,3%
58 Catania	CTA	734048	8,2%	15,2%	5879	1,8%	671	-9,7%
59 Tenerife	TFS	697381	18,0%	26,0%	4325	12,0%	311	-7,1%
60 Berlin	SXF	685463	-6,2%	0,3%	5548	-5,3%	373	-1,7%
61 Bourgas	BOJ	659253	16,2%	32,1%	4326	16,5%	526	31,3%
62 Porto	OPO	626249	14,4%	38,0%	5800	10,6%	3145	4,7%
63 Toulouse	TLS	621094	9,5%	11,4%	6935	3,0%	3288	-4,3%
64 Bologna	BLQ	607842	8,9%	24,0%	6090	-0,7%	2975	22,0%
65 Naples	NAP	603819	1,2%	7,4%	5334	-3,1%	81	1,5%
66 Charleroi	CRL	594760	5,6%	N/A	3689	3,6%	2	150,0%
67 Riga	RIX	568271	9,1%	31,7%	7008	6,9%	683	4,6%
68 Hanover	HAJ	558674	0,2%	3,9%	5602	-5,1%	277	-17,8%
69 Palermo	PMO	536155	16,5%	12,8%	4561	1,3%	67	-23,9%
70 Lanzarote	ACE	529680	10,2%	19,3%	4379	5,2%	279	0,9%

Group 1	Group 2	Group 3	Group 4
Over 25 million pax	Between 10 and 15 million pax	Between 5 and 10 million pax	Less than 5 million pax

CITY	CODE	Passengers		Movements		Freight			
		July		July		July			
		2011/2010	2011/2009	2011/2010	2011/2010	2011/2010	2011/2010		
71	Valencia	VLC	524786	2,3%	3,7%	5586	-5,0%	924	-3,5%
72	Newcastle	NCL	520534	-0,7%	-1,1%	4464	-7,3%	17	-46,0%
73	Bucharest	OTP	504846	0,7%	10,4%	6424	-5,9%	1849	9,2%
74	Belfast	BFS	478728	-3,7%	-11,2%	3931	-10,7%	2334	-12,6%
75	Sevilla	SVQ	476538	23,2%	18,6%	4038	9,3%	435	0,5%
76	Bergen	BGO	472281	8,8%	24,4%	5471	2,5%	267	-13,7%
77	Fuerteventura	FUE	461695	13,3%	36,9%	3935	11,3%	116	-24,9%
78	Cagliari	CAG	451611	16,4%	17,7%	3739	9,4%	131	-19,7%
79	Göteborg	GOT	444903	20,2%	45,5%	4975	13,6%	3289	-10,4%
80	Verona	VRN	438770	14,2%	15,7%	3851	3,4%	388	-10,6%
81	Rome	CIA	433051	7,1%	-4,5%	2908	8,9%	1683	7,5%
82	Bilbao	BIO	429139	5,3%	11,6%	4375	-1,4%	216	-16,0%
83	Malta	MLA	417487	3,5%	19,7%	3150	-4,7%	1190	-4,6%
84	Bordeaux	BOD	407273	6,2%	25,0%	4480	4,1%	570	5,9%
85	Tenerife	TFN	389616	0,9%	-0,1%	5086	1,7%	1342	12,8%
86	Belgrade	BEG	384312	8,8%	24,4%	4189	-3,3%	556	-14,3%
87	Bari	BRI	360908	4,6%	17,9%	3115	0,1%	16	-12,9%
88	Girona	GRO	351285	-41,0%	-40,5%	2552	-36,2%	1	-80,5%
89	Nuremberg	NUE	340262	-0,4%	7,1%	4524	-4,7%	720	-5,8%
90	Katowice	KTW	338019	7,5%	14,0%	2842	6,8%	869	42,9%
91	Sofia	SOF	336506	2,9%	14,9%	3719	-0,4%	1306	15,0%
92	Keflavik	KEF	332501	17,3%	31,0%	3330	18,1%	2967	10,8%
93	Stavanger	SVG	317091	14,3%	16,5%	3576	5,2%	316	70,0%
94	Krakow	KRK	316519	-0,2%	5,8%	2788	-7,9%	191	-24,7%
95	Adana	ADA	307983	19,2%	30,8%	2132	10,1%	429	-34,7%
96	Aberdeen	ABZ	301072	8,7%	4,3%	8420	0,3%	487	-6,3%
97	Turin	TRN	300176	-3,9%	1,1%	3596	-3,3%	73	-6,4%
98	Varna	VAR	299282	3,6%	11,0%	2197	2,6%	4	-56,5%
99	Trondheim	TRD	296180	9,6%	14,8%	3428	1,8%	97	-23,3%
100	Eindhoven	EIN	290618	27,4%	63,9%	2025	23,5%	N/A	N/A
101	Cork	ORK	283424	2,1%	-2,5%	2317	-2,4%	76	11,1%
102	London	LCY	282660	6,9%	16,4%	N/A	N/A	N/A	N/A
103	Split	SPU	272733	9,3%	35,3%	2398	4,3%	88	1,0%
104	Zagreb	ZAG	257759	10,0%	14,0%	3358	0,5%	728	13,0%
105	Dubrovnik	DBV	256305	13,8%	32,9%	2185	10,4%	45	-37,9%
106	Bucharest	BBU	253374	7,3%	N/A	1912	-29,0%	N/A	N/A
107	Bremen	BRE	251667	-10,9%	3,8%	N/A	N/A	48	4,3%
108	Bratislava	BTS	250695	2,5%	N/A	2182	-1,1%	1726	14,4%
109	Paphos	PFO	235183	18,6%	15,6%	1350	0,3%	18	50,0%
110	Leipzig	LEJ	234593	-5,2%	-6,4%	5075	-2,4%	63077	15,3%
111	Brindisi	BDS	231534	26,0%	80,1%	1707	23,0%	19	362,8%
112	Tirana	TIA	199495	10,2%	29,5%	2426	7,3%	172	4,3%
113	Florence	FLR	196601	14,5%	N/A	2503	8,4%	16	-9,0%
114	Samara	KUF	195843	10,8%	33,5%	1944	15,4%	304	12,0%
115	Southampton	SOU	192420	2,5%	1,0%	3998	-3,5%	7	-55,6%
116	Dortmund	DTM	189810	2,3%	4,7%	1326	-1,6%	608	-17,0%
117	Tallinn	TLL	189149	39,3%	46,7%	2799	17,7%	1356	246,3%
118	Vilnius	VNO	185707	24,0%	33,1%	2440	8,1%	355	12,0%
119	Minsk	MSQ	183227	6,1%	30,4%	1368	21,2%	500	-39,2%
120	Yerevan	EVN	182039	-7,9%	7,3%	1893	-7,9%	870	28,5%
121	Ljubljana	LJU	172260	-8,8%	-7,4%	2751	-6,6%	661	16,8%
122	Tromsø	TOS	162012	1,4%	6,6%	2613	-1,9%	131	-27,8%
123	Shannon	SNN	157310	-5,4%	-47,9%	1944	1,8%	1333	-12,7%
124	Bodo	BOO	155413	2,8%	9,0%	2982	0,5%	88	-8,0%
125	Malmö	MMX	153095	30,8%	40,1%	1756	17,7%	2346	-9,5%
126	Cardiff	CWL	152536	-11,2%	-19,8%	1694	-7,7%	N/A	N/A
127	Münster	FMO	152115	-2,0%	-10,0%	1709	-1,8%	N/A	N/A
128	Salzburg	SZG	149939	8,2%	16,5%	1710	4,1%	11	-0,9%
129	Tivat	TIV	147630	16,6%	31,7%	659	-1,9%	2	-44,5%
130	Bastia	BIA	145054	6,9%	12,0%	N/A	N/A	204	0,2%
131	Sandefjord	TRF	139313	-17,8%	-30,1%	1564	-12,1%	N/A	N/A
132	Chisinau	KIV	121890	12,1%	37,6%	1376	2,4%	178	-3,3%
133	Ponta Delgada	PDL	119529	2,8%	8,4%	1423	5,6%	579	-5,1%
134	Tbilisi	TBS	116667	21,4%	53,4%	844	26,0%	N/A	N/A
135	Graz	GRZ	110205	-1,6%	-1,5%	1619	-5,5%	14	-33,3%
136	Stockholm	BMA	108582	13,9%	15,7%	1921	3,1%	18	-14,3%
137	Cluj	CLJ	106378	-7,0%	8,3%	1389	-11,0%	66	165,1%
138	Strasbourg	SXB	102353	3,7%	-0,2%	2099	-2,2%	13	-18,8%
139	Skopje	SKP	97625	8,1%	26,5%	1075	-8,6%	236	31,9%
140	Guernsey	GCI	97018	-2,2%	-1,3%	3641	-4,9%	211	-8,3%

Group 1	Group 2	Group 3	Group 4
Over 25 million pax	Between 10 and 15 million pax	Between 5 and 10 million pax	Less than 5 million pax

CITY	CODE	Passengers			Movements		Freight		
		July			July		July		
		2011/2010	2011/2009		2011/2010		2011/2010		
141	Linz	LNZ	87313	0,4%	3,9%	1428	0,0%	640	-1,7%
142	Sarajevo	SJJ	81042	11,6%	19,3%	453	-15,6%	142	-13,9%
143	Kaunas	KUN	80304	-12,8%	76,3%	730	-7,8%	267	-43,4%
144	Podgorica	TGD	76426	-5,3%	47,3%	542	-13,0%	58	-79,1%
145	Bournemouth	BOH	75766	-15,6%	-15,2%	753	-16,4%	N/A	N/A
146	Toulon	TLN	74305	12,3%	-1,7%	1893	37,6%	N/A	N/A
147	Aalesund	AES	74065	-0,1%	17,4%	694	-2,7%	42	66,7%
148	Luleå	LLA	73518	1,4%	7,0%	624	-14,4%	21	10,5%
149	Kristiansand	KRS	69823	9,0%	9,6%	1506	12,6%	160	891,7%
150	Umeå	UME	63897	24,9%	29,2%	774	12,8%	16	128,6%
151	Isle Of Man	IOM	63604	0,0%	-2,1%	3033	0,6%	31	-3,1%
152	Friedrichshafen	FDH	62080	-0,5%	11,5%	1173	-13,9%	N/A	N/A
153	Liege	LGG	56335	4,4%	-16,2%	2636	2,1%	55609	12,2%
154	Pau	PUF	53239	-15,8%	-6,4%	835	3,1%	66	6,5%
155	Haugesund	HAU	51594	2,9%	14,5%	405	-12,5%	15	-16,5%
156	Visby	VBY	51193	18,2%	38,7%	1163	-10,1%	6	-14,3%
157	Humberside	HUY	29901	-5,7%	-13,2%	1534	-18,5%	110	301,6%
158	Skellefteå	SFT	19925	51,2%	55,2%	266	44,6%	N/A	N/A
159	Porto Santo	PXO	18757	17,9%	11,3%	314	-1,3%	13	-1,3%
160	Ohrid	OHD	16295	122,0%	112,8%	158	95,1%	N/A	N/A
161	Kiruna	KRN	15552	-25,5%	-14,7%	156	-31,6%	7	133,3%
162	Ostersund	OSD	15199	6,5%	28,4%	172	-23,6%	4	0,0%
163	Hammerfest	HFT	10433	13,9%	-4,7%	646	-3,3%	14	7,8%
164	Ronneby	RNB	9625	-5,3%	42,8%	194	22,8%	1	0,0%
165	Sundsvall	SDL	8782	0,0%	-4,7%	273	-5,2%	2	0,0%
166	Chambery	CMF	251	-40,0%	-22,3%	50	-20,6%	N/A	N/A
167	Arad	ARW	42	-96,0%	-99,5%	76	-61,6%	76	18,7%

Group 1	Group 2	Group 3	Group 4
Over 25 million pax	Between 10 and 15 million pax	Between 5 and 10 million pax	Less than 5 million pax

----- Preliminary traffic figures -----

- Airports welcoming more than 25 million passengers per year (Group 1)
- Airports welcoming between 10 and 25 million passengers (Group 2)
- Airports welcoming between 5 and 10 million passengers (Group 3)
- Airports welcoming less than 5 million passengers per year (Group 4)

CITY	CODE	Passengers			Commercial movements		Freight	
		YTD			YTD		YTD	
		2011/2010	2011/2009		2011/2010		2011/2010	
1 London	LHR	39762295	7,7%	5,2%	277477	8,0%	869003	2,6%
2 Paris	CDG	34969496	5,9%	4,8%	294696	3,9%	N/A	N/A
3 Frankfurt	FRA	32090166	7,8%	10,4%	275673	6,3%	1267113	0,8%
4 Madrid	MAD	28792188	0,6%	4,0%	252212	0,0%	226599	8,1%
5 Amsterdam	AMS	28266665	12,0%	13,9%	241073	9,8%	883665	4,4%
6 Munich	MUC	21565133	12,3%	16,9%	226421	8,3%	168765	11,5%
7 Rome	FCO	21417335	5,5%	12,1%	188384	1,5%	84617	-4,8%
8 Istanbul	IST	20709875	14,0%	24,5%	171352	10,5%	260993	1,1%
9 Barcelona	BCN	19473225	20,8%	24,9%	175259	12,3%	58101	-6,3%
10 London	LGW	19150519	8,8%	4,4%	142308	6,4%	51246	-16,0%
11 Paris	ORY	15901792	9,2%	7,5%	134431	6,9%	N/A	N/A
12 Zurich	ZRH	13792131	8,3%	12,1%	136788	5,4%	167810	-5,0%
13 Antalya	AYT	13770758	16,2%	44,0%	87658	12,4%	4768	-16,0%
14 Copenhagen	CPH	13066008	8,0%	15,3%	143758	5,4%	N/A	N/A
15 Palma De Mallorca	PMI	12681704	8,4%	5,4%	102176	3,7%	9279	-7,7%
16 Oslo	OSL	12065577	13,2%	16,6%	127275	6,8%	36653	25,5%
17 Vienna	VIE	11817541	8,1%	15,2%	141956	1,1%	118214	-8,2%
18 Düsseldorf	DUS	11397074	9,7%	14,1%	121335	4,4%	48058	-3,0%
19 Milan	MXP	11185828	4,8%	11,9%	110647	2,2%	264940	10,1%
20 Dublin	DUB	11018164	4,7%	-9,8%	90739	3,6%	55168	0,0%
21 Stockholm	ARN	10863439	15,9%	16,7%	116354	13,1%	40526	-10,8%
22 Brussels	BRU	10674615	11,6%	9,5%	125325	6,6%	245746	-2,8%
23 Manchester	MAN	10644302	7,5%	-1,9%	89551	6,2%	62009	-4,5%
24 London	STN	10423971	-1,2%	-8,7%	80101	-3,9%	119234	2,8%
25 Berlin	TXL	9524051	15,5%	19,0%	94934	9,3%	16037	35,9%
26 Helsinki	HEL	8651495	17,4%	18,0%	111953	17,0%	91827	15,9%
27 Athens	ATH	8379710	-5,8%	-7,3%	92916	-11,3%	45431	-11,1%
28 Lisbon	LIS	8364810	7,4%	12,1%	80338	1,9%	54553	-0,7%
29 Istanbul	SAW	7889829	25,7%	143,8%	69010	22,7%	16696	34,0%
30 Geneva	GVA	7881402	11,9%	16,4%	80854	9,6%	25970	20,7%
31 Hamburg	HAM	7667499	6,5%	10,8%	81785	3,4%	37707	-8,0%
32 Malaga	AGP	7354298	10,8%	10,6%	60594	6,6%	1801	3,3%
33 Prague	PRG	6723175	4,9%	4,3%	86078	-1,9%	32985	18,5%
34 Gran Canaria	LPA	6049751	11,6%	14,7%	60762	6,8%	13715	-0,2%
35 Nice	NCE	6036046	10,2%	5,8%	84508	12,5%	8690	-1,9%
36 Alicante	ALC	5693025	7,9%	11,8%	43978	4,1%	1975	7,0%
37 London	LTN	5433016	10,9%	3,1%	46445	7,5%	17127	0,9%
38 Edinburgh	EDI	5428591	11,9%	4,1%	61641	5,3%	11547	-11,3%
39 Warsaw	WAW	5279789	7,9%	11,9%	71749	2,3%	24892	10,2%
40 Stuttgart	STR	5279585	5,6%	5,1%	60487	-0,8%	12078	2,1%
41 Milan	LIN	5194142	12,0%	6,3%	55940	4,3%	9621	7,1%
42 Lyon	LYS	5005341	9,8%	10,9%	69800	2,7%	19019	-1,1%
43 Ankara	ESB	4952979	15,1%	N/A	42512	23,9%	8392	-2,6%
44 Budapest	BUD	4935913	10,5%	11,1%	59852	5,5%	36278	5,5%
45 Tenerife	TFS	4911912	19,2%	20,6%	32194	14,0%	2582	4,8%
46 Izmir	ADB	4868980	16,1%	42,9%	36152	12,0%	7714	-22,2%
47 Birmingham	BHX	4865901	0,1%	-7,1%	49833	-1,9%	9479	-24,1%
48 Milan	BGY	4777305	10,3%	18,6%	39106	6,1%	65154	7,3%
49 Venice	VCE	4584326	19,4%	21,4%	43430	11,2%	23676	8,9%
50 Moscow	VKO	4450253	-15,8%	7,9%	56675	-5,0%	19056	-5,3%
51 Marseille	MRS	4176164	-2,3%	-0,3%	55243	-2,1%	31003	2,5%
52 Toulouse	TLS	4097184	9,8%	10,6%	50128	7,2%	29913	5,3%
53 Berlin	SXF	4038614	0,0%	7,2%	36247	0,7%	2566	-6,5%
54 Glasgow	GLA	3940622	6,1%	-5,4%	41070	3,3%	1774	-21,4%
55 Catania	CTA	3792557	8,6%	13,6%	33002	5,0%	4763	5,4%
56 Porto	OPO	3445146	20,2%	38,5%	35085	13,1%	16485	-5,4%
57 Bologna	BLQ	3388707	12,3%	28,8%	37395	1,7%	18994	22,8%
58 Charleroi	CRL	3354207	18,1%	N/A	23040	14,4%	10	13,1%
59 Naples	NAP	3239527	4,7%	8,8%	32030	0,3%	578	-0,6%
60 Lanzarote	ACE	3170031	14,1%	20,1%	27434	8,1%	1740	-18,7%
61 Faro	FAO	3168563	9,6%	N/A	23550	6,3%	122	-31,0%
62 Larnaca	LCA	3111953	6,2%	9,1%	28439	3,0%	19519	-11,1%
63 Bergen	BGO	3042937	13,2%	15,2%	42762	7,9%	1586	1,4%
64 Ibiza	IBZ	2987084	14,2%	24,4%	30908	12,0%	1560	-18,3%
65 Riga	RIX	2953180	12,9%	31,2%	40811	9,6%	4178	14,6%
66 Sevilla	SVQ	2906602	21,6%	25,0%	27232	9,4%	3093	-7,2%
67 Valencia	VLC	2902120	4,8%	7,7%	36152	-1,7%	6237	-6,3%
68 Fuerteventura	FUE	2843050	24,9%	35,2%	24640	16,5%	925	-7,0%
69 Palermo	PMO	2833746	17,1%	13,6%	27119	6,4%	451	-18,3%
70 Bucharest	OTP	2821841	3,8%	14,1%	41517	0,4%	12190	7,1%

CITY	CODE	Passengers			Commercial movements		Freight	
		YTD			YTD		YTD	
		2011/2010	2011/2009		2011/2010		2011/2010	
71 Gothenburg	GOT	2803199	23,5%	32,8%	38428	19,2%	25745	-2,0%
72 Rome	CIA	2724423	7,6%	-0,2%	19524	6,4%	11285	11,2%
73 Newcastle	NCL	2489666	1,5%	-5,0%	25656	-3,7%	423	85,9%
74 Sofia	SOF	2487094	1,0%	36,3%	32224	4,1%	16170	-4,3%
75 Bordeaux	BOD	2372227	14,2%	22,8%	29900	10,8%	4680	20,6%
76 Tenerife	TFN	2328756	0,0%	0,6%	32616	-2,0%	8765	-1,6%
77 Bilbao	BIO	2319118	3,4%	11,4%	27978	-0,2%	1609	6,9%
78 Nuremberg	NUE	2296065	0,5%	-0,5%	31393	-3,0%	5054	6,5%
79 Stavanger	SVG	2201286	15,1%	12,8%	29597	9,0%	1809	12,4%
80 Trondheim	TRD	2193927	13,0%	12,8%	28725	7,1%	866	-7,2%
81 Eindhoven	EIN	2160358	87,5%	138,1%	16351	82,3%	N/A	N/A
82 Turin	TRN	2141328	4,1%	11,2%	25588	1,5%	608	-6,8%
83 Cagliari	CAG	2091085	9,3%	13,7%	19276	1,6%	971	-8,4%
84 Bari	BRI	2076901	10,9%	30,1%	19057	2,8%	116	-4,9%
85 Malta	MLA	1980882	10,7%	23,4%	14254	3,5%	8708	-3,0%
86 Girona	GRO	1883342	-35,0%	-37,4%	14800	-32,1%	58	143,6%
87 Adana	ADA	1878355	15,9%	34,3%	13854	7,7%	3256	-44,8%
88 Verona	VRN	1844668	7,4%	4,0%	19874	3,5%	3067	-0,2%
89 Aberdeen	ABZ	1748052	11,8%	1,4%	55577	7,1%	3369	16,3%
90 Belgrade	BEG	1720321	17,4%	26,6%	23112	6,3%	4030	6,5%
91 Bremen	BRE	1459952	-1,6%	5,3%	N/A	N/A	377	8,6%
92 Katowice	KTW	1397980	4,5%	3,1%	13872	6,4%	6433	9,4%
93 Bucharest	BBU	1380759	14,8%	N/A	12767	-19,1%	N/A	N/A
94 Zagreb	ZAG	1321837	15,5%	11,3%	20580	2,3%	4393	-6,3%
95 Leipzig	LEJ	1237983	-6,7%	-7,0%	32929	3,4%	420320	21,2%
96 Stockholm	BMA	1230291	9,7%	12,3%	23817	7,2%	236	66,2%
97 Keflavik	KEF	1209044	22,0%	26,1%	13892	17,2%	20347	2,7%
98 Bourgas	BOJ	1192645	18,3%	29,3%	8963	21,3%	3544	11,6%
99 Brindisi	BDS	1133944	34,6%	89,7%	8967	25,2%	53	-58,0%
100 Florence	FLR	1110815	13,9%	N/A	15009	7,2%	123	16,2%
101 Salzburg	SZG	1097177	5,4%	9,7%	12432	-1,8%	116	34,4%
102 Malmo	MMX	1091512	22,2%	24,9%	14225	14,5%	18610	10,0%
103 Tallinn	TLL	1060601	37,1%	35,4%	17977	19,0%	7921	24,9%
104 Tromsø	TOS	1039147	9,6%	10,3%	17446	-0,3%	1099	-7,3%
105 Dortmund	DTM	1000455	1,3%	0,2%	7663	-3,4%	4889	7,6%
106 Tirana	TIA	993490	20,3%	34,0%	12778	9,9%	1256	15,7%
107 Bodo	BOO	988496	7,9%	9,7%	20419	0,1%	599	-6,2%
108 Paphos	PFO	953731	8,6%	8,1%	6523	-8,9%	219	-23,4%
109 Samara	KUF	944496	8,0%	35,4%	11020	11,9%	1931	15,7%
110 Vilnius	VNO	901843	8,9%	22,1%	14642	-1,3%	2452	23,3%
111 Yerevan	EVN	850207	0,9%	13,1%	10120	-1,4%	4738	5,9%
112 Shannon	SNN	778073	-11,2%	-54,0%	11437	2,0%	9328	-12,8%
113 Ljubljana	LJU	776619	4,4%	-2,4%	16417	1,1%	4280	17,4%
114 Sandefjord	TRF	756066	-15,0%	-24,4%	10908	-15,5%	N/A	N/A
115 Muenster	FMO	726742	-0,3%	-6,0%	9579	-2,4%	77	-1,3%
116 Dubrovnik	DBV	724113	9,4%	19,5%	6942	3,9%	238	5,2%
117 Split	SPU	697293	8,1%	15,3%	7600	5,4%	394	-0,5%
118 Varna	VAR	679478	2,9%	3,8%	6140	-3,4%	28	-30,8%
119 Luleå	LLA	613487	12,0%	10,1%	7433	8,5%	231	53,0%
120 Cluj	CLJ	611072	8,6%	39,9%	8462	-9,6%	423	126,6%
121 Bastia	BIA	584174	2,8%	2,2%	N/A	N/A	1046	72,6%
122 Graz	GRZ	566402	1,8%	7,6%	9660	-4,3%	100	-9,1%
123 Umeå	UME	536822	17,3%	16,5%	8109	17,6%	114	50,0%
124 Ponta Delgada	PDL	530220	2,4%	3,9%	6860	-1,7%	3600	3,5%
125 Kristiansand	KRS	527950	16,7%	8,3%	11013	9,6%	1226	576,7%
126 Kaunas	KUN	519084	27,8%	107,9%	4959	16,6%	1501	3,5%
127 Aalesund	AES	510831	10,5%	15,5%	5636	-3,5%	364	0,0%
128 Skopje	SKP	409046	8,3%	21,1%	5396	-8,7%	1245	10,1%
129 Isle Of Man	IOM	403966	4,8%	-2,7%	19287	-6,8%	233	-21,5%
130 Linz	LNZ	382121	-3,0%	-2,5%	6793	-17,3%	4924	31,6%
131 Bournemouth	BOH	373010	-18,5%	-30,5%	4370	-18,7%	N/A	N/A
132 Sarajevo	SJJ	355772	10,6%	17,8%	2864	-7,9%	792	-7,0%
133 Haugesund	HAU	343115	11,6%	22,0%	3809	0,8%	131	-10,8%
134 Tivat	TIV	342531	16,9%	20,7%	1843	-0,1%	2343	17906,7%
135 Podgorica	TGD	341808	0,1%	40,6%	3168	-4,7%	62592	5552,1%
136 Friedrichshafen	FDH	320095	-1,7%	-6,5%	7245	-5,5%	34	-11,7%
137 Ostersund	OSD	220338	4,8%	17,5%	3001	-24,5%	42	-6,7%
138 Chambery	CMF	209783	-0,6%	-10,5%	3321	9,9%	N/A	N/A
139 Visby	VBY	201063	19,3%	12,4%	6796	14,0%	40	0,0%
140 Liege	LGG	168443	0,5%	-14,3%	16747	0,9%	395040	6,0%

		Passengers			Commercial movements		Freight		
CITY	CODE	YTD			YTD		YTD		
		2011/2010	2011/2009		2011/2010		2011/2010		
141	Humberside	HUY	162305	2,6%	-18,4%	9344	-3,1%	665	42,6%
142	Sundsvall	SDL	155589	10,6%	10,2%	4166	-0,6%	56	27,3%
143	Skellefteå	SFT	151398	21,9%	28,7%	1856	-19,8%	N/A	N/A
144	Ronneby	RNB	125135	11,8%	19,1%	2222	16,6%	6	50,0%
145	Kiruna	KRN	98868	-19,7%	-16,7%	1178	-25,3%	66	144,4%
146	Hammerfest	HFT	84048	25,5%	16,4%	4447	6,5%	92	18,1%
147	Porto Santo	PXO	59650	3,1%	-10,1%	1631	-6,9%	77	-48,6%
148	Ohrid	OHD	44582	87,2%	156,3%	474	80,2%	3	866,7%
149	Arad	ARW	758	-96,4%	-98,9%	632	-38,8%	525	44,1%

Total commercial passengers

International passengers (enplaned + deplaned) + **domestic passengers** (enplaned + deplaned) + **direct transit passengers** (passengers who arrive at and depart from the airport on a flight bearing the same number. They are counted only ONCE).

Commercial movements

Landing or take off of an aircraft operating a scheduled or non scheduled commercial service.

Freight

Freight loaded and unloaded (arriving or departing) at the airport. Freight comprises goods, newspapers, diplomatic bags, parcel post and express parcel.