



# Airport Traffic Report August 2009

## European passenger traffic down -4.5% during August 2009

The '**ACI EUROPE Airport Traffic Report - August 2009**' includes **108 airports** in total.




The overall **passenger** traffic at European airports decreased by **-4.5%** in **August 2009** compared with August 2008. The overall **freight** traffic among European airports decreased **-11.7%** in August 2009 when compared with the corresponding month in 2008. The overall figure for **movements** at European airports decreased **-7.8%** in August 2009 when compared with August 2008.




The accumulated figure for **passenger** traffic **January to August 2009** decreased by **-8.1%** compared with the corresponding period 2008. The accumulated figure for **freight** traffic during **January to August** decreased by **-21.1%** and **movements** decreased by **-9.2%** during the corresponding period when compared with 2008.




Airports welcoming more than 25 million passengers per year (Group 1), airports welcoming between 10 and 25 million passengers (Group 2), airports welcoming between 5 and 10 million passengers (Group 3) and airports welcoming less than 5 million passengers per year (Group 4) reported an average decrease of **-3.1%**, **-6.0%**, **-4.2%** and **-2.8%** respectively when compared with August 2008. The same comparison of August 2009 with August 2007 demonstrates an average decrease of **-3.8%**, **-6.6%**, **-3.3%** and **-2.0%** respectively.




Examples of airports that experienced the highest increase in passenger traffic per group, when comparing August 2009 with August 2008, include:

- **Group 1 airports** – London LHR (**+0.2%**)
- **Group 2 airports** – Athens (**+2.3%**), Dusseldorf (**+0.4%**) and Geneva (**+0.3%**)
- **Group 3 airports** – Milan BGY (**+17.3%**), Marseille (**+5.8%**) and Edinburgh (**+4.8%**)
- **Group 4 airports** – Charleroi (**+43.1%**), Bari (**+21.1%**) and Cagliari (**+20.5%**).

Airport		Passengers		Commercial movements		Freight	
		 August 2009		 August 2009		 August 2009	
LONDON	LHR	6393321	0,2%	39621	-3,0%	111325	-7,4%
PARIS	CDG	5711714	-4,5%	45021	-8,1%	151550	-8,5%
FRANKFURT	FRA	4894872	-0,4%	38817	-5,1%	154110	-5,5%
MADRID	MAD	4700092	-1,3%	36570	-4,3%	23034	-6,3%
AMSTERDAM	AMS	4486933	-4,9%	36372	-7,0%	108618	-15,0%
LONDON	LGW	3742132	-4,7%	25031	-3,5%	6270	-19,1%
ROME	FCO	3425965	-6,3%	27685	-11,1%	9639	-18,5%
PALMA DE MALLORCA	PMI	3060354	-8,2%	22236	-9,7%	1526	-17,5%
MUNICH	MUC	3034535	-3,1%	31563	-8,6%	17947	-8,2%
BARCELONA	BCN	2887541	-7,6%	24263	-12,2%	6583	-20,4%
PARIS	ORY	2416960	-1,1%	18085	-3,8%	8000	1,9%
MOSCOW	DME	2239466	-8,0%	18605	-7,6%	10942	-8,5%
LONDON	STN	2225883	-7,8%	15436	-7,3%	14398	-10,0%
MANCHESTER	MAN	2167227	-10,0%	15868	-13,6%	9318	-16,7%
ZURICH	ZRH	2120505	0,1%	19892	-3,7%	19573	-12,9%
DUBLIN	DUB	2100060	-15,1%	15224	-17,7%	7977	5,8%
ATHENS	ATH	1920704	2,3%	19585	10,9%	7394	-14,9%
MILAN	MPX	1907655	-4,8%	16894	-11,1%	22499	-11,7%
COPENHAGEN	CPH	1859596	-7,5%	19741	-13,5%	N/A	N/A
VIENNA	VIE	1762294	-6,8%	20938	-9,6%	14819	-3,7%
BRUSSELS	BRU	1740471	-4,4%	18309	-5,3%	N/A	N/A
DÜSSELDORF	DUS	1726101	0,4%	17619	-7,6%	6219	-22,1%
MOSCOW	SVO	1650719	0,8%	14648	-5,6%	9291	-6,0%
OSLO	OSL	1637666	-4,8%	18210	-10,5%	3920	-19,9%
LISBON	LIS	1494748	-1,3%	12980	-2,4%	6905	1,4%
STOCKHOLM	ARN	1415141	-10,9%	14952	-13,9%	4441	-44,5%
MALAGA	AGP	1378858	-8,8%	10769	-13,0%	319	-30,8%
PRAGUE	PRG	1339938	-4,4%	15544	-6,4%	2914	-9,0%
BERLIN	TXL	1225734	-1,9%	12095	-5,5%	1440	5,0%
NICE	NCE	1136214	-1,5%	13188	-6,5%	814	40,7%
HELSINKI	HEL	1129795	-5,0%	14021	-6,9%	9771	-19,7%
ALICANTE	ALC	1106780	3,1%	7966	-2,8%	261	-87,5%
HAMBURG	HAM	1088724	-6,5%	11281	-11,9%	5376	-14,0%
GENEVA	GVA	1018138	0,3%	10298	-6,2%	2659	6,9%
BIRMINGHAM	BHX	1014967	-6,0%	8686	-11,7%	1150	19,9%
COLOGNE	CGN	991786	-5,2%	10779	-7,9%	41456	-2,7%
IBIZA	IBZ	975049	0,8%	8821	-6,0%	396	-22,7%
STUTTGART	STR	940391	-7,2%	9432	-15,0%	1444	-21,5%
EDINBURGH	EDI	928982	4,8%	9732	-4,2%	1720	228,2%
MOSCOW	VKO	921507	1,4%	9410	-9,5%	2472	9,0%
BUDAPEST	BUD	918928	-2,3%	9969	-5,7%	4133	-14,1%
WARSAW	WAW	875975	-10,9%	10823	-10,7%	2629	-8,7%
ST PETERSBURG	LED	832176	-4,2%	9144	-4,6%	1643	-13,3%
MILAN	BGY	789494	17,3%	5906	7,9%	6240	-11,4%
GRAN CANARIA	LPA	753255	-13,3%	7800	-16,5%	2046	-15,5%
MARSEILLE	MRS	751532	5,8%	8439	0,3%	3579	16,3%
LYON	LYS	730331	-3,3%	9248	-9,0%	1873	2,7%
FARO	FAO	722661	-3,5%	4858	-3,9%	41	-28,5%
MILAN	LIN	721084	-2,0%	6874	-5,0%	772	-14,8%
GLASGOW	GLA	714627	-13,6%	6593	-17,2%	322	-18,5%
VENICE	VCE	709370	-2,3%	6475	-7,6%	2137	-4,3%
BERLIN	SXF	681964	-0,7%	5534	4,9%	315	15,5%
TENERIFE	TFS	619833	-16,2%	4032	-20,0%	426	-39,4%
GIRONA	GRO	616100	2,5%	4019	0,9%	13	1854,7%
NAPLES	NAP	598421	-6,7%	5402	-10,2%	53	-29,9%
VALENCIA	VLC	547737	-15,0%	5851	-17,9%	563	-19,8%
EAST MIDLANDS	EMA	542500	-13,9%	5722	-11,0%	17696	-9,6%
BOLOGNA	BLQ	540814	14,1%	5610	3,5%	1118	-17,4%
MENORCA	MAH	503039	-2,6%	4297	-11,4%	323	-16,6%
PORTO	OPO	501361	-5,1%	4968	-6,9%	1800	-42,9%
LANZAROTE	ACE	493028	-13,9%	3960	-21,9%	312	-32,5%
TOULOUSE	TLS	481578	-0,9%	5666	-4,3%	3417	-2,7%
HANOVER	HAJ	480996	-14,7%	5402	-13,5%	242	-59,8%
BUCHAREST	OTP	480420	-8,3%	6366	2,2%	1342	-27,6%
ROME	CIA	462075	2,8%	3066	2,3%	1036	-17,6%
HAHN	HHN	434536	2,9%	3740	-1,0%	10728	9,8%
RIGA	RIX	428168	8,9%	5610	7,3%	395	-8,8%
CAGLIARI	CAG	414087	20,5%	3784	12,0%	91	-62,7%

Airport	Passengers		Commercial movements		Freight		
	 August 2009		 August 2009		 August 2009		
CHARLEROI	CRL	411913	43,1%	7347	20,1%	N/A	N/A
SEVILLA	SVQ	411746	-2,3%	3658	-8,6%	281	-33,7%
BERGEN	BGO	404997	-10,3%	5939	-8,2%	194	-27,4%
FUERTEVENTURA	FUE	399968	-16,7%	3507	-18,2%	171	-27,1%
TENERIFE	TFN	389569	-6,8%	4982	-14,1%	1581	7,4%
BASEL	BSL	385955	-13,2%	4356	-9,1%	2094	-28,5%
MALTA	MLA	378718	-3,2%	3150	3,2%	1108	-12,1%
BILBAO	BIO	369121	-4,5%	3822	-9,6%	163	-19,7%
GOTHENBURG	GOT	320478	-13,9%	4500	-14,0%	3813	1,2%
SOFIA	SOF	314792	-5,5%	3579	-10,3%	1061	-13,4%
BARI	BRI	310566	21,1%	2748	6,3%	15	-40,0%
BORDEAUX	BOD	302063	-8,5%	3455	-19,0%	370	-15,1%
TRONDHEIM	TRD	289887	-2,3%	3998	-3,2%	121	-30,9%
KRAKOW	KRK	285742	-8,3%	2825	-8,5%	169	-15,3%
KATOWICE	KTW	283847	2,1%	1973	-18,5%	390	-19,3%
STAVANGER	SVG	281596	-7,0%	4173	-4,8%	224	-4,4%
TURIN	TRN	271259	0,9%	3204	-5,4%	85	51,1%
ABERDEEN	ABZ	269915	-9,8%	8366	-5,0%	378	6,2%
FUNCHAL	FNC	254149	2,2%	2116	0,9%	499	-7,0%
LJUBLJANA	LJU	185820	-5,1%	3114	-7,9%	458	-32,0%
SOUTHAMPTON	SOU	185281	-3,7%	3825	-9,8%	19	11,8%
LUXEMBOURG	LUX	171124	-6,9%	3992	-11,0%	46911	-27,6%
FLORENCE	FLR	160924	-13,7%	2184	-21,7%	22	266,7%
TROMSOE	TOS	147591	2,8%	2597	-2,7%	153	-8,7%
SALZBURG	SZG	139067	-18,4%	1537	-13,8%	14	-54,4%
MALMO	MMX	138998	-13,9%	1825	-12,5%	1821	-23,7%
VILNIUS	VNO	138874	-38,1%	1945	-44,0%	218	-34,9%
STOCKHOLM	BMA	138859	2,7%	2931	6,0%	19	0,0%
BODO	BOO	138569	8,0%	3090	-4,6%	163	21,8%
TALLINN	TLL	130632	-26,0%	2225	-26,9%	963	-77,5%
BRINDISI	BDS	124894	5,2%	976	-16,0%	7	-74,3%
BOURNEMOUTH	BOH	95885	-17,2%	784	-27,3%	N/A	N/A
STRASBOURG	SXB	82844	-16,4%	1814	-16,8%	16	-33,3%
SKOPJE	SKP	75724	-10,6%	1031	-8,4%	135	-12,6%
TOULON	TLN	73212	-2,2%	1320	-13,2%	N/A	N/A
LIEGE	LGG	69367	-26,7%	2261	-9,3%	33978	-8,7%
KRISTIANSAND	KRS	68373	-12,3%	1575	-15,9%	25	-37,9%
AALESUND	AES	65526	-7,7%	830	-14,5%	41	-50,2%
HAUGESUND	HAU	50303	4,4%	597	-15,9%	21	-14,4%
HUMBERSIDE	HUY	40745	-21,8%	1732	40,1%	128	32,7%
OHRID	OHD	8612	-1,0%	114	-13,6%	N/A	N/A

Airport		Passengers		Commercial movements		Freight	
		 January - August 2009		 January - August 2009		 January - August 2009	
London	LHR	44181322	-2,6%	309739	-2,6%	803786	-15,0%
Paris	CDG	39087419	-5,9%	350529	-6,0%	N/A	N/A
Frankfurt	FRA	33950534	-6,3%	301125	-5,3%	1118218	-18,4%
Madrid	MAD	32383191	-8,4%	289759	-9,8%	182823	-15,8%
Amsterdam	AMS	29295545	-9,6%	264764	-8,8%	803813	-24,2%
Rome	FCO	22536254	-6,8%	214697	-8,1%	78487	-16,5%
London	LGW	22086339	-8,2%	165860	-6,6%	45163	-41,7%
Munich	MUC	21481879	-7,8%	252178	-8,1%	136154	-17,6%
Barcelona	BCN	18481685	-13,2%	188153	-15,0%	54884	-21,0%
Paris	ORY	17207822	-4,7%	149062	-4,3%	N/A	N/A
Palma De Mallorca	PMI	15096021	-7,4%	123063	-8,8%	11341	-22,3%
Zurich	ZRH	14426863	-2,8%	148285	-4,9%	164147	-12,7%
Dublin	DUB	14311339	-12,2%	116759	-14,5%	N/A	N/A
London	STN	13644695	-12,1%	105852	-13,9%	115609	-13,5%
Copenhagen	CPH	13193394	-11,4%	153225	-12,9%	N/A	N/A
Manchester	MAN	13016424	-12,4%	112190	-15,2%	64190	-35,4%
Moscow	DME	12041946	-16,3%	117527	-12,9%	65931	-23,3%
Vienna	VIE	12021789	-10,8%	142455	-20,3%	110533	-10,4%
Oslo	OSL	11986618	-9,4%	138570	-10,3%	33878	-22,4%
Milan	MXP	11905593	-12,8%	123248	-17,8%	204658	-30,1%
Düsseldorf	DUS	11713937	-3,9%	134286	-7,5%	39500	-14,0%
Brussels	BRU	11484811	-9,8%	143644	-11,2%	217669	-44,3%
Athens	ATH	10962859	-2,6%	129423	7,5%	61404	-18,1%
Stockholm	ARN	10725461	-13,4%	122656	-14,1%	41011	-40,2%
Berlin	TXL	9228399	-3,5%	98999	-4,0%	10373	-9,7%
Lisbon	LIS	8956387	-3,8%	89282	-5,8%	51857	-13,4%
Helsinki	HEL	8441479	-6,3%	113802	-6,6%	65413	-31,4%
Malaga	AGP	8028588	-11,2%	67498	-15,1%	2343	-29,2%
Hamburg	HAM	8007350	-7,3%	89711	-11,6%	41745	-21,1%
Prague	PRG	7786365	-10,4%	108816	-8,4%	22222	-22,6%
Nice	NCE	6842781	-6,0%	83014	-7,4%	6870	37,3%
Cologne	CGN	6473447	-7,7%	80094	-7,8%	349693	-8,4%
Birmingham	BHX	6255444	-5,0%	64604	-7,9%	7457	-11,6%
Alicante	ALC	6200898	-7,2%	48908	-10,6%	2099	-53,6%
Edinburgh	EDI	6143044	0,0%	72997	-5,9%	15973	119,3%
Gran Canaria	LPA	6028138	-12,2%	63078	-14,4%	16486	-27,6%
Stuttgart	STR	5964830	-11,1%	74850	-13,2%	10771	-23,8%
Milan	LIN	5605432	-13,8%	63429	-4,1%	9097	-17,0%
Warsaw	WAW	5592392	-14,6%	80507	-12,5%	20801	-19,1%
Budapest	BUD	5360487	-6,9%	70550	-6,7%	31145	-24,7%
Moscow	VKO	5047369	-7,2%	62187	-11,4%	18222	6,9%
Glasgow	GLA	4879310	-13,2%	50447	-15,1%	1768	-33,1%
Milan	BGY	4817592	8,4%	41484	-0,3%	63964	-23,5%
Tenerife	TFS	4692298	-17,2%	31034	-22,8%	3665	-37,3%
Venice	VCE	4485321	-5,6%	47100	-6,7%	19631	9,9%
Berlin	SXF	4449264	1,5%	39731	5,8%	2468	-3,1%
Girona	GRO	3622940	-5,7%	26498	-9,0%	42	-76,4%
Naples	NAP	3574633	-9,6%	37902	-9,0%	677	-32,2%
Faro	FAO	3543171	-8,2%	26000	-7,3%	505	20,6%
Ibiza	IBZ	3375310	-2,1%	34787	-7,5%	2163	-23,6%
Hanover	HAJ	3330126	-12,3%	41141	-12,9%	2323	-42,9%
Valencia	VLC	3243324	-21,6%	44261	-20,4%	6170	-34,5%
Rome	CIA	3192158	-1,2%	22968	-2,7%	10941	-17,4%
Lanzarote	ACE	3131454	-17,5%	27098	-23,1%	2904	-23,0%
Bergen	BGO	3044628	-3,8%	45442	-5,9%	1612	-14,2%
Porto	OPO	2987993	-4,3%	35122	-7,2%	16918	-23,6%
Sevilla	SVQ	2736215	-11,6%	28715	-18,3%	3350	-17,8%
Tenerife	TFN	2704137	-6,1%	38226	-8,3%	11951	-13,1%
Riga	RIX	2679533	9,7%	38792	6,8%	3140	-5,3%
Hahn	HHN	2595530	-2,9%	25372	-3,3%	59777	-27,5%
Basel	BSL	2564884	-12,3%	34360	-11,1%	18862	-28,1%
Fuerteventura	FUE	2502749	-18,4%	23344	-18,8%	1298	-31,3%
Bilbao	BIO	2451068	-15,8%	31012	-14,6%	1759	-18,3%
Gothenburg	GOT	2431774	-17,1%	35624	-15,7%	26825	-18,7%
Trondheim	TRD	2235444	-2,7%	30853	-3,3%	1099	-24,2%
Bordeaux	BOD	2234375	-8,3%	30732	-15,5%	3959	-33,2%
Stavanger	SVG	2232986	-4,1%	33458	-2,6%	1706	-24,4%
Turin	TRN	2197428	-8,6%	30822	-3,8%	866	4,3%

Airport		Passengers		Commercial movements		Freight	
			January - August 2009		January - August 2009		January - August 2009
Sofia	SOF	2139579	-1,4%	27259	-3,4%	8765	-19,8%
Aberdeen	ABZ	1994657	-10,7%	64789	-6,6%	3418	21,2%
Malta	MLA	1983980	-9,0%	18769	-2,9%	10008	-11,9%
Bari	BRI	1907405	10,0%	19965	-1,0%	188	-80,4%
Menorca	MAH	1789667	-7,4%	19149	-10,9%	1819	-19,7%
Funchal	FNC	1621708	-4,3%	14990	-3,1%	4204	-6,2%
Stockholm	BMA	1234214	3,6%	24714	7,2%	139	-37,9%
Southampton	SOU	1211678	-9,7%	27551	-10,0%	133	-33,0%
Tromsø	TOS	1090077	-2,9%	19810	-5,3%	1288	-12,4%
Luxembourg	LUX	1043746	-10,3%	31224	-10,2%	394843	-25,6%
Bodo	BOO	1039793	2,4%	23640	-4,7%	838	-23,1%
Malmö	MMX	1012679	-15,6%	14212	-15,6%	15827	-20,3%
Ljubljana	LJU	981244	-16,3%	21957	-8,8%	3941	-35,3%
Vilnius	VNO	877228	-39,0%	13845	-46,1%	1712	-37,0%
Strasbourg	SXB	730632	-18,9%	18453	-19,2%	178	-31,3%
Brindisi	BDS	722313	3,8%	6890	-8,5%	44	-57,5%
Bournemouth	BOH	632513	-16,3%	6755	-17,8%	N/A	N/A
Kristiansand	KRS	555871	-7,2%	12910	-5,1%	236	-31,9%
Aalesund	AES	507904	-5,0%	6645	-6,8%	475	-29,2%
Skopje	SKP	413394	-10,6%	6651	-7,5%	1435	1,2%
Haugesund	HAU	331512	-6,7%	3865	-23,5%	199	-12,7%
Liege	LGG	265914	-10,5%	16973	-10,4%	286889	-19,5%
Humberside	HUY	239540	-18,4%	11353	36,5%	683	-55,2%

----- Preliminary traffic figures -----

**Total commercial passengers**

**International passengers** (enplaned + deplaned) + **domestic passengers** (enplaned + deplaned) + **direct transit passengers** (passengers who arrive at and depart from the airport on a flight bearing the same number. They are counted only ONCE).

**Commercial movements**

Landing or take off of an aircraft operating a scheduled or non scheduled commercial service.

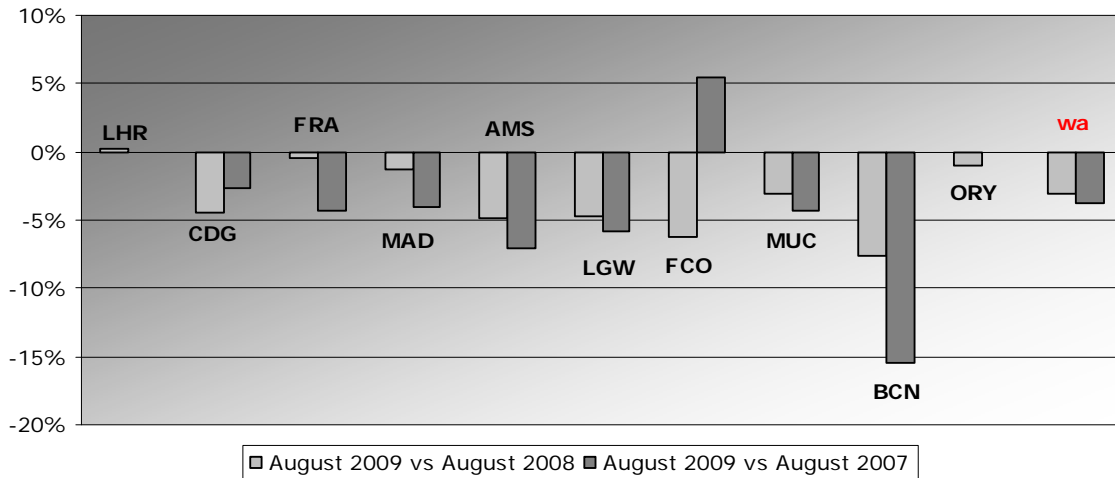
**Freight**

Freight loaded and unloaded (arriving or departing) at the airport. Freight comprises goods, newspapers, diplomatic bags, parcel post and express parcel.

**Group 1**  
**Airports welcoming more than 25 million passengers per year**  
**(percentage traffic variation August 2009 versus 2008 and 2007)**

Airport	2009v2008 variation %	2009v2007 variation %
LHR	0,2%	-0,1%
CDG	-4,5%	-2,7%
FRA	-0,4%	-4,3%
MAD	-1,3%	-4,0%
AMS	-4,9%	-7,0%
LGW	-4,7%	-5,8%
FCO	-6,3%	5,4%
MUC	-3,1%	-4,3%
BCN	-7,6%	-15,5%
ORY	-1,1%	-0,1%
<b>wa*</b>	<b>-3,1%</b>	<b>-3,8%</b>

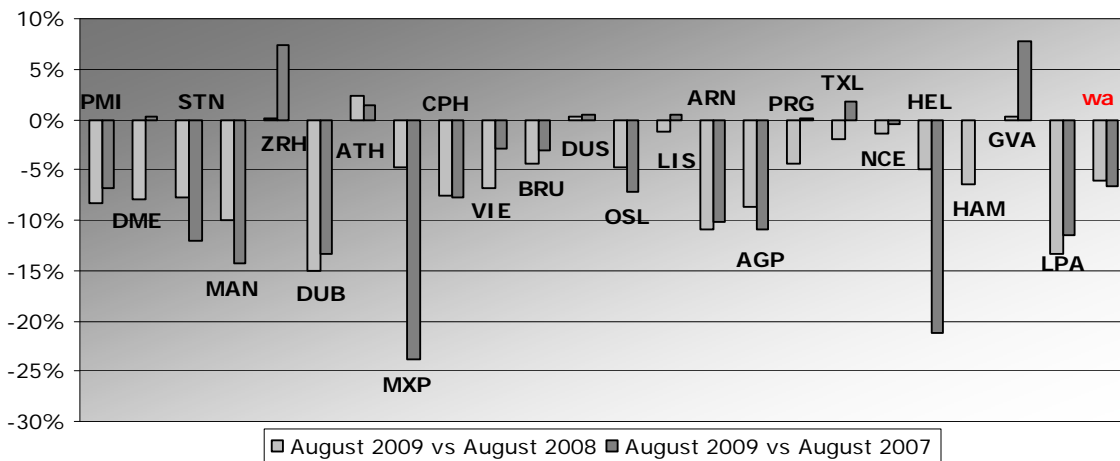
\*weighted average =  $\text{SUM}(\% \text{change} * \text{pax}) / \text{SUM}(\text{pax})$



**Group 2**  
**Airports welcoming between 10 and 25 million passengers**  
**per year (percentage traffic variation August 2009 versus 2008 and 2007)**

Airport	2009v2008 variation %	2009v2007 variation %
PMI	-8,2%	-6,8%
DME	-8,0%	0,2%
STN	-7,8%	-12,1%
MAN	-10,0%	-14,3%
ZRH	0,1%	7,5%
DUB	-15,1%	-13,3%
ATH	2,3%	1,5%
MXP	-4,8%	-23,9%
CPH	-7,5%	-7,8%
VIE	-6,8%	-2,9%
BRU	-4,4%	-3,1%
DUS	0,4%	0,4%
OSL	-4,8%	-7,2%
LIS	-1,3%	0,4%
ARN	-10,9%	-10,1%
AGP	-8,8%	-10,8%
PRG	-4,4%	0,1%
TXL	-1,9%	1,8%
NCE	-1,5%	-0,4%
HEL	-5,0%	-21,3%
HAM	-6,5%	N/A
GVA	0,3%	7,8%
LPA	-13,3%	-11,5%
<b>wa*</b>	<b>-6,0%</b>	<b>-6,6%</b>

\*weighted average =  $\text{SUM}(\% \text{change} * \text{pax}) / \text{SUM}(\text{pax})$

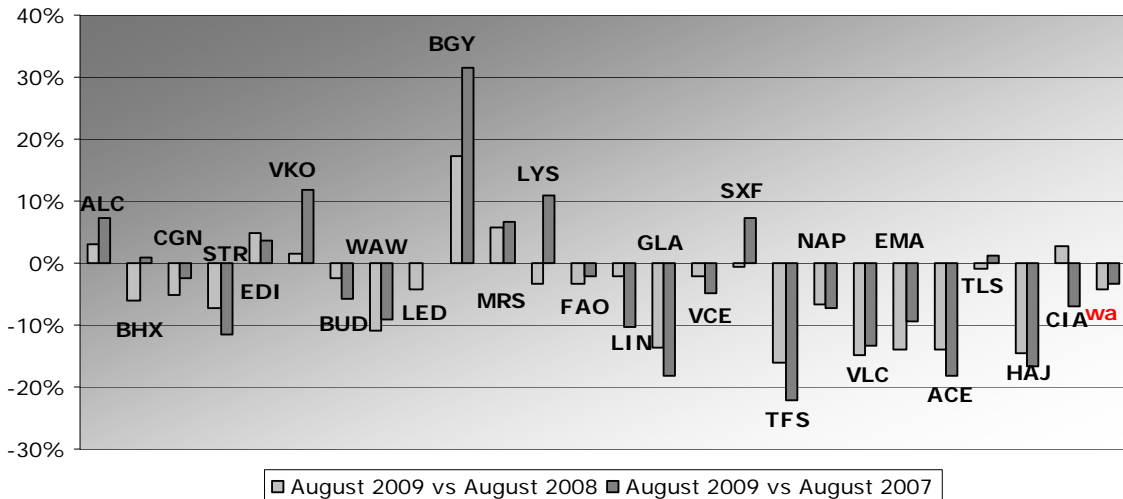




**Group 3**  
**Airports welcoming between 5 and 10 million passengers**  
**per year (percentage traffic variation August 2009 versus 2008 and 2007)**

Airport	2009v2008 variation %	2009v2007 variation %
ALC	3,1%	7,4%
BHX	-6,0%	0,9%
CGN	-5,2%	-2,5%
STR	-7,2%	-11,5%
EDI	4,8%	3,8%
VKO	1,4%	11,8%
BUD	-2,3%	-5,9%
WAW	-10,9%	-9,2%
LED	-4,2%	N/A
BGY	17,3%	31,6%
MRS	5,8%	6,6%
LYS	-3,3%	11,0%
FAO	-3,5%	-2,1%
LIN	-2,0%	-10,2%
GLA	-13,6%	-18,2%
VCE	-2,3%	-5,0%
SXF	-0,7%	7,3%
TFS	-16,2%	-22,0%
NAP	-6,7%	-7,2%
VLC	-15,0%	-13,3%
EMA	-13,9%	-9,5%
ACE	-13,9%	-18,1%
TLS	-0,9%	1,1%
HAJ	-14,7%	-16,6%
CIA	2,8%	-7,1%
<b>wa*</b>	<b>-4,2%</b>	<b>-3,3%</b>

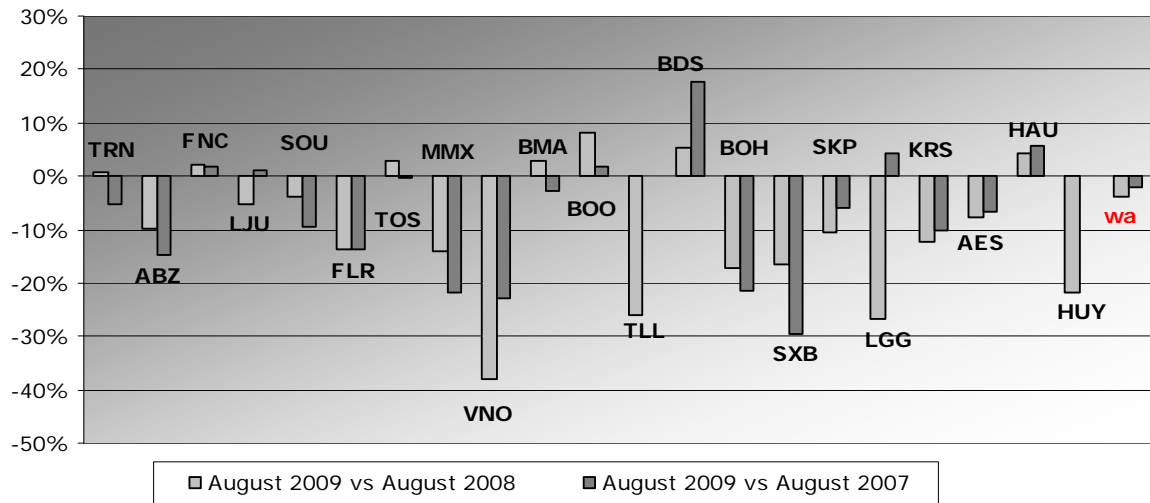
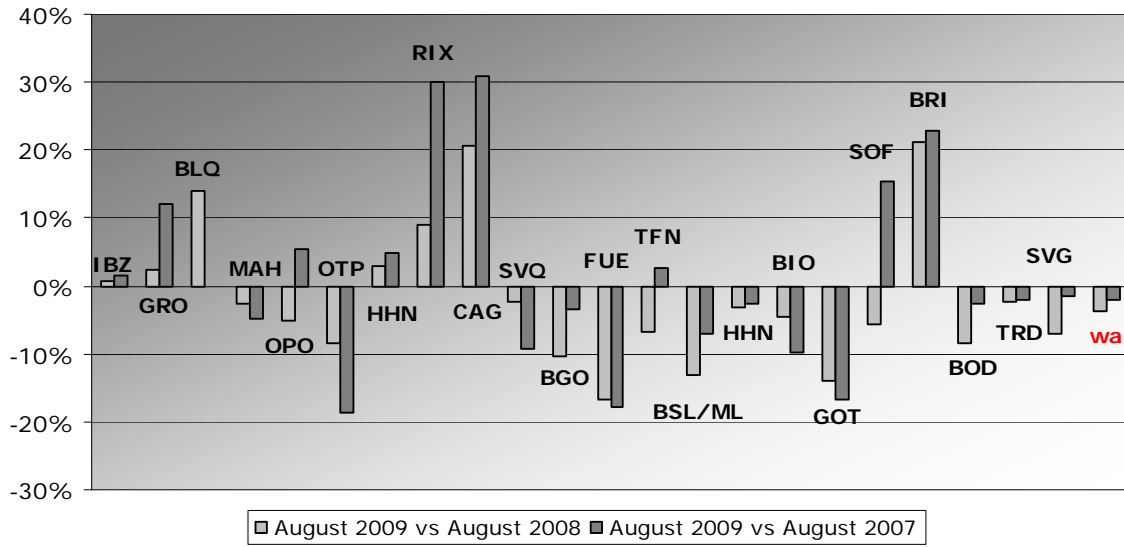
\*weighted average=SUM(%change\*pax)/SUM(pax)



**Group 4**  
**Airports welcoming less than 5 million passengers**  
**per year (percentage traffic variation August 2009 versus 2008 and 2007)**

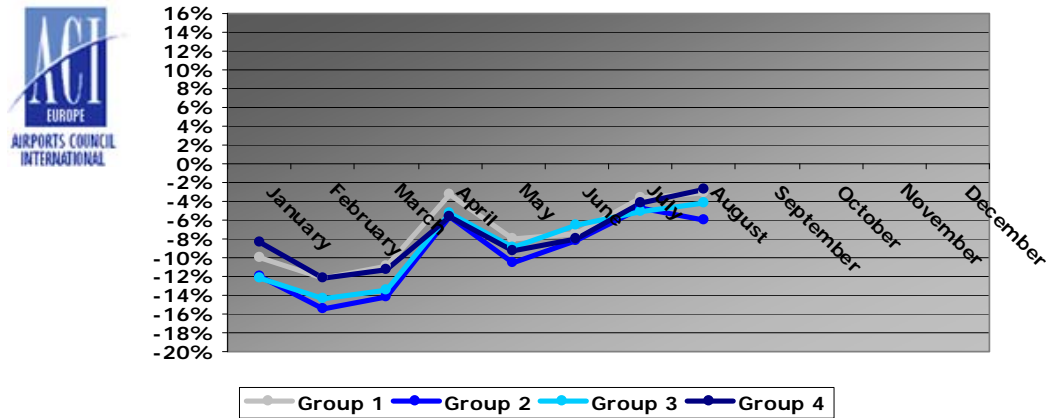
Airport	2009v2008 variation %	2009v2007 variation %
IBZ	0,8%	1,7%
GRO	2,5%	12,0%
BLQ	14,1%	N/A
MAH	-2,6%	-4,9%
OPO	-5,1%	5,3%
OTP	-8,3%	-18,7%
HHN	2,9%	5,0%
RIX	8,9%	30,2%
CAG	20,5%	30,9%
SVQ	-2,3%	-9,1%
BGO	-10,3%	-3,4%
FUE	-16,7%	-17,9%
TFN	-6,8%	2,6%
BSL/ML	-13,2%	-7,0%
MLA	-3,2%	-2,7%
BIO	-4,5%	-9,7%
GOT	-13,9%	-16,7%
SOF	-5,5%	15,4%
BRI	21,1%	22,9%
BOD	-8,5%	-2,6%
TRD	-2,3%	-2,0%
SVG	-7,0%	-1,5%
TRN	0,9%	-5,2%
ABZ	-9,8%	-14,7%
FNC	2,2%	1,9%
LJU	-5,1%	1,3%
SOU	-3,7%	-9,3%
FLR	-13,7%	-13,7%
TOS	2,8%	-0,4%
MMX	-13,9%	-21,9%
VNO	-38,1%	-22,9%
BMA	2,7%	-2,8%
BOO	8,0%	2,0%
TLL	-26,0%	N/A
BDS	5,2%	17,6%
BOH	-17,2%	-21,6%
SXB	-16,4%	-29,6%
SKP	-10,6%	-5,8%
LGG	-26,7%	4,1%
KRS	-12,3%	-10,3%
AES	-7,7%	-6,6%
HAU	4,4%	5,8%
HUY	-21,8%	N/A
<b>wa*</b>	<b>-2,8%</b>	<b>-2,0%</b>

\*weighted average=SUM(%change\*pax)/SUM(pax)



## Year-to-date airport passenger trends

The graphic illustrates and compares the trends of the different airport Groups 1, 2, 3 and 4 for 2009.



The graphic compares the amount of total commercial passengers 2009 with 2008. The airports included, in this graphic, are: LHR, FRA, CDG, AMS, MAD, LGW, FCO, MUC, BCN, ORY, STN, MAN, MXP, ZRH, CPH, ARN, DUB, OS L, BRU, VIE, DUS, ATH, PMI, AGP, DME, HEL, TXL, LIS, HAM, PRG.

