



# Airport Traffic Report

## April 2008

## European passenger traffic up 1.5% during April 2008

The 'ACI EUROPE Airport Traffic Report - April 2008' includes **107 airports** in total.

The overall **passenger** traffic at European airports increased by **+1.5%** in **April 2008** compared with April 2007. The overall **freight** traffic among European airports increased **+4.0%** in April 2008 when compared with the corresponding month in 2007. The overall figure for **movements** at European airports increased **4.3%** in April 2008 when compared with April 2007.

Passenger figures for April 2008 indicate that Group 4 airports (airports welcoming less than 5 million passengers per year) had the largest increase in traffic - with an average increase of **+6.0%** when compared with April 2007 - and an average increase of **+14.8%** when compared with April 2006.

Airports welcoming more than 25 million passengers per year (Group 1), airports welcoming between 10 and 25 million passengers (Group 2) and airports welcoming between 5 and 10 million passengers (Group 3) reported an average increase of **+0.5%**, **+1.7%** and **+1.1%** respectively when compared with April 2007. The same comparison of April 2008 with April 2006 demonstrates an average increase of **+3.8%**, **+4.9%** and **+6.3%** respectively.

Examples of airports that experienced the highest increase in passenger traffic per group, when comparing April 2008 with April 2007, include:

- **Group 1 airports** – Rome Fiumicino (**+11.0%**), Munich (**+5.4%**), Frankfurt (**+2.2%**) and Paris Charles de Gaulle (**1.1%**);
- **Group 2 airports** – Moscow- Domodedovo (**+24.2%**), Berlin (**+21.0%**), Oslo (**+19.0%**) and Vienna (**+9.8%**);
- **Group 3 airports** – Moscow-Vnukovo (**+27.8%**), Lyon (**+10.2%**), Alicante (**+10.0%**) and Nottingham East Midlands (**+7.5%**);
- **Group 4 airports** – Stavanger (**+31.5%**), Vilnius (**+31.3%**), Katowice (**+28.3%**) and Ljubljana (**+26.1%**).

Airports		Passengers				Commercial movements		Freight (metric tonnes)	
		April 2008	2008v 2007 variation %	January – April	2008v 2007 variation %	April 2008	2008v 2007 variation %	April 2008	2008v 2007 variation %
1	<b>London Heathrow</b> (LHR)	5,475,800	-3.6%	20,910,700	-0.6%	39,312	0.2%	120,950	15.8%
2	<b>Paris Roissy</b> (CDG)	5,175,100	1.1%	18,718,700	3.0%	46,899	4.6%	N/A	N/A
3	<b>Frankfurt</b> (FRA)	4,466,400	2.2%	16,713,900	3.2%	39,826	2.0%	178,786	5.2%
4	<b>Madrid</b> (MAD)	4,333,900	-0.2%	16,695,600	6.7%	40,788	3.4%	27,692	12.2%
5	<b>Amsterdam</b> (AMS)	3,921,100	0.3%	14,029,400	1.4%	36,218	0.4%	138,095	7.1%
6	<b>Rome-Fiumicino</b> (FCO)	3,080,400	11.0%	10,146,500	8.3%	29,808	13.6%	12,785	21.1%
7	<b>Munich</b> (MUC)	2,977,900	5.4%	10,679,000	6.2%	35,666	7.0%	21,562	6.6%
8	<b>London Gatwick</b> (LGW)	2,658,400	-2.5%	10,029,600	3.3%	20,637	0.4%	8,424	-42.2%
9	<b>Barcelona</b> (BCN)	2,589,500	-5.5%	9,534,300	0.7%	27,947	-3.5%	8,901	4.2%
10	<b>Paris Orly</b> (ORY)	2,269,000	0.1%	8,415,600	-0.1%	20,022	3.9%	N/A	N/A
11	<b>London Stansted</b> (STN)	1,865,500	-5.6%	6,690,600	-4.8%	15,496	-1.6%	17,663	6.2%
12	<b>Zurich</b> (ZRH)	1,835,500	6.9%	6,717,000	9.3%	19,251	5.7%	24,082	8.1%
13	<b>Dublin</b> (DUB)	1,823,400	-1.9%	6,976,100	5.3%	16,392	4.8%	9,611	17.3%
14	<b>Copenhagen</b> (CPH)	1,798,800	9.2%	6,712,300	6.5%	23,066	16.8%	N/A	N/A
15	<b>Oslo</b> (OSL)	1,723,400	19.0%	6,103,200	9.5%	20,264	21.6%	5,821	18.6%
16	<b>Vienna</b> (VIE)	1,677,200	9.8%	5,973,300	14.4%	22,451	10.5%	15,377	-3.8%
17	<b>Brussels</b> (BRU)	1,612,000	8.3%	5,561,100	13.1%	20,438	6.6%	52,936	-8.2%
18	<b>Moscow-Domodedovo</b> (DME)	1,595,200	24.2%	5,676,700	23.8%	15,570	15.8%	11,837	13.3%
19	<b>Stockholm-Arlanda</b> (ARN)	1,590,600	8.4%	5,862,000	5.7%	19,636	18.2%	9,866	10.5%
20	<b>Manchester</b> (MAN)	1,568,100	-6.0%	5,989,700	-0.5%	15,545	-4.1%	13,023	4.0%
21	<b>Palma de Mallorca</b> (PMI)	1,566,900	-5.0%	4,632,400	0.5%	14,414	-4.2%	1,844	6.0%
22	<b>Düsseldorf</b> (DUS)	1,456,300	7.7%	5,176,800	5.4%	18,175	7.9%	4,588	8.4%
23	<b>Milan-Malpensa</b> (MXP)	1,382,900	-30.8%	6,782,300	-5.2%	16,125	-24.2%	36,518	-8.5%
24	<b>Athens</b> (ATH)	1,320,200	-4.0%	4,438,600	2.2%	14,822	-2.0%	10,240	21.5%
25	<b>Berlin</b> (TXL)	1,246,400	21.0%	4,477,500	18.5%	12,953	14.2%	1,482	33.4%
26	<b>Helsinki</b> (HEL)	1,122,600	5.9%	4,313,400	4.5%	16,288	12.1%	8,663	-15.3%

Airports		Passengers				Commercial movements		Freight (metric tonnes)	
		April 2008	2008v 2007 variation %	January – April	2008v 2007 variation %	April 2008	2008v 2007 variation %	April 2008	2008v 2007 variation %
27	<b>Hamburg</b> (HAM)	1,104,200	9.2%	3,945,700	7.0%	N/A	N/A	3,058	-1.5%
28	<b>Malaga</b> (AGP)	1,079,800	-8.2%	3,550,800	-1.1%	9,679	-8.2%	402	-9.2%
29	<b>Lisbon</b> (LIS)	1,079,100	-7.2%	4,002,400	4.9%	11,285	-2.6%	7443	7.4%
30	<b>Prague</b> (PRG)	1,000,900	0.1%	3,512,200	5.0%	14,280	0.1%	3,776	-3.9%
31	<b>Geneva</b> (GVA)	936,500	3.8%	4,258,000	10.2%	10,973	2.2%	2,338	-0.5%
32	<b>Nice</b> (NCE)	867,400	-1.7%	2,877,100	3.3%	10,564	-1.5%	660	-8.4%
33	<b>Gran Canaria</b> (LPA)	831,500	-5.3%	3,723,000	2.1%	9,229	1.5%	2,978	-2.2%
34	<b>Cologne/Bonn</b> (CGN)	828,600	-2.1%	2,874,600	-2.1%	10,628	-8.4%	51,381	-10.1%
35	<b>Milan Linate</b> (LIN)	820,900	-2.2%	3,088,000	1.3%	8,264	2.7%	1,346	-0.6%
36	<b>Stuttgart</b> (STR)	820,800	-0.3%	2,833,300	-1.4%	11,003	3.4%	1,885	-20.6%
37	<b>Alicante</b> (ALC)	804,800	10.0%	2,722,800	15.5%	6,750	6.8%	338	-8.2%
38	<b>Warsaw</b> (WAW)	749,700	5.8%	2,740,200	10.0%	10,944	3.4%	3,659	-0.6%
39	<b>Tenerife Sur</b> (TFS)	747,400	-0.1%	3,208,800	3.3%	5,410	-1.1%	722	1.6%
40	<b>Edinburgh</b> (EDI)	724,800	-0.1%	2,681,200	3.3%	9,715	4.1%	775	-78.7%
41	<b>Birmingham</b> (BHX)	712,800	6.3%	2,654,900	6.1%	8,303	2.9%	1,072	14.7%
42	<b>Lyon</b> (LYS)	700,900	10.2%	2,473,000	7.4%	10,878	3.6%	2,479	-7.6%
43	<b>Budapest</b> (BUD)	670,300	-4.7%	2,379,400	3.4%	9,173	-4.1%	5,629	12.9%
44	<b>Glasgow</b> (GLA)	648,100	-0.5%	1,611,800	32.5%	7,361	-0.1%	360	2.9%
45	<b>Moscow- Vnukovo (VKO)</b>	604,200	27.8%	2,127,658	39.7%	11,178	25.3%	1,879	0.0%
46	<b>Marseille</b> (MRS)	582,200	-2.2%	2,038,800	1.0%	8,003	-0.7%	3,701	13.3%
47	<b>Venice</b> (VCE)	567,800	-4.6%	1,997,700	3.4%	6,275	-7.5%	1,911	22.2%
48	<b>Toulouse</b> (TLS)	559,100	7.4%	2,033,900	4.1%	7,085	5.2%	4,357	-0.3%
49	<b>Milan/Orio al Serio</b> (BGY)	545,200	7.3%	1,961,000	13.1%	5,133	9.3%	11,569	17.0%
50	<b>Valencia</b> (VLC)	498,800	-3.2%	1,873,400	9.1%	6,980	1.8%	1,490	50.9%
51	<b>Naples</b> (NAP)	475,400	-2.9%	1,601,700	7.0%	5,262	-2.2%	96	-74.8%
52	<b>Girona</b> (GRO)	459,500	15.7%	1,611,800	32.5%	3,630	26.8%	2	-94.6%
53	<b>Nottingham East Midlands (EMA)</b>	450,600	7.5%	1,650,700	12.9%	5,864	15.5%	22,920	-1.7%

Airports		Passengers				Commercial movements		Freight (metric tonnes)	
		April 2008	2008v 2007 variation %	January – April	2008v 2007 variation %	April 2008	2008v 2007 variation %	April 2008	2008v 2007 variation %
54	Liverpool (LPL)	449,200	-0.6%	1,665,600	2.3%	4,041	2.6%	322	22.9%
55	Hanover (HAJ)	443,200	0.4%	1,557,400	2.2%	5,880	8.3%	420	-55.3%
56	Lanzarote (ACE)	437,600	-9.1%	1,848,200	3.0%	4,224	-0.6%	445	-3.8%
57	Bergen (BGO)	425,400	23.9%	1,499,300	8.9%	6,792	22.9%	207	-11.9%
58	Faro (FAO)	422,600	-2.4%	1,125,600	-2.2%	3,402	2.3%	67	23.7%
59	Sevilla (SVQ)	408,400	6.6%	1,475,100	9.9%	4,521	7.4%	454	-24.1%
60	Rome-Ciampino (CIA)	400,800	-20.5%	1,510,200	-12.9%	2,922	-21.0%	1,789	-5.1%
61	Nuremberg (NUE)	394,200	18.6%	1,437,500	9.2%	5,359	0.1%	1,038	14.2%
62	Goteborg (GOT)	366,300	8.7%	1,377,900	5.0%	5,730	18.3%	4,813	-20.6%
63	Basel-Mulhouse (BSL/ML)	364,300	-3.3%	1,217,600	0.1%	5,004	5.1%	3,735	-0.1%
64	Porto (OPO)	363,400	10.5%	1,328,500	20.2%	4,613	16.6%	2,754	11.9%
65	Fuerteventura (FUE)	360,100	-6.4%	1,464,300	1.2%	3,482	-1.1%	250	-5.9%
66	Bilbao (BIO)	355,600	-4.4%	1,334,300	10.4%	4,724	-1.0%	290	7.4%
67	Tenerife Norte (TFN)	339,100	-6.3%	1,312,400	-0.8%	5,074	3.6%	1,809	-24.5%
68	Stavanger (SVG)	318,100	31.5%	1,140,400	13.2%	4,744	20.6%	255	15.2%
69	Hahn (HHN)	314,300	-13.8%	1,066,800	-11.7%	3,215	-9.4%	11,070	24.5%
70	Bordeaux (BOD)	312,300	5.5%	1,049,300	2.5%	4,810	10.5%	692	-27.6%
71	Trondheim (TRD)	306,200	22.0%	1,113,200	7.1%	4,327	19.4%	197	4.1%
72	Turin (TRN)	288,400	-1.9%	1,212,400	3.6%	4,045	2.0%	83	-61.2%
73	Aberdeen (ABZ)	280,700	1.6%	1,018,200	-1.5%	8,836	5.4%	380	-7.1%
74	Riga (RIX)	272,900	10.6%	993,500	18.5%	4,436	22.9%	453	-35.7%
75	Malta (MLA)	252,600	6.3%	799,800	17.0%	2,309	-3.8%	1,492	7.6%
76	Verona (VRD)	245,000	-2.3%	890,400	5.8%	2,863	1.2%	625	-4.7%
77	Sofia (SOF)	244,400	13.8%	968,500	16.9%	3,462	17.6%	1,635	6.9%
78	Madeira (FNC)	217,200	-10.7%	622,400	4.7%	1,967	-2.4%	561	-28.3%
79	Bari (BRI)	211,700	7.4%	750,200	10.6%	2,571	16.8%	134	-55.3%
80	Katowice (KTW)	179,600	28.3%	N/A	N/A	1,923	16.5%	871	49.7%

Airports		Passengers				Commercial movements		Freight (metric tones)	
		April 2008	2008v 2007 variation %	January – April	2008v 2007 variation %	April 2008	2008v 2007 variation %	April 2008	2008v 2007 variation %
81	<b>Florence</b> (FLR)	178,900	0.8%	573,800	4.2%	2,740	14.0%	9	38.8%
82	<b>Stockholm- Bromma</b> (BMA)	178,200	18.0%	628,500	7.0%	3,517	27.5%	35	218.2%
83	<b>Southampton</b> (SOU)	173,800	9.4%	582,700	4.9%	4,056	2.8%	29	61.1%
84	<b>Ibiza</b> (IBZ)	169,700	-9.9%	532,700	1.5%	2,822	1.2%	374	23.2%
85	<b>Vilnius</b> (VNO)	167,200	31.3%	588,200	35.7%	3,264	44.4%	384	-18.4%
86	<b>Malmö</b> (MMX)	157,900	3.1%	560,700	-5.6%	2,380	11.5%	2,743	-34.4%
87	<b>Tallinn</b> (TLL)	155,100	16.6%	558,700	12.8%	3,088	26.1%	3,874	242.3%
88	<b>Tromsø</b> (TOS)	144,800	15.0%	527,400	7.5%	2,734	14.2%	190	-16.0%
89	<b>Ljubljana</b> (LJU)	136,400	26.1%	403,500	13.3%	2,944	9.6%	804	-31.9%
90	<b>Bodo</b> (BOO)	125,300	9.6%	471,400	3.4%	3,278	13.4%	140	-30.7%
91	<b>Strasbourg</b> (SXB)	120,300	-25.2%	422,900	-31.5%	3,043	-4.8%	37	-87.5%
92	<b>Menorca</b> (MAH)	107,000	-13.1%	344,700	-0.9%	1,807	-7.0%	240	-4.6%
93	<b>Bournemouth</b> (BOH)	95,900	11.1%	N/A	N/A	1,083	8.4%	12	-98.6%
94	<b>Kristiansand</b> (KRS)	81,300	22.0%	280,500	6.7%	1,776	8.8%	50	10.5%
95	<b>Dubrovnik</b> (DBV)	75,200	1.5%	156,400	7.9%	610	-25.3%	62	1.6%
96	<b>Brindisi</b> (BDS)	71,700	4.7%	262,000	9.0%	866	40.8%	8	-10.9%
97	<b>Aalesund</b> (AES)	68,600	20.1%	244,800	6.8%	949	11.0%	87	-35.5%
98	<b>Skopje</b> (SKP)	48,900	6.6%	179,000	8.7%	848	7.1%	189	21.4%
99	<b>Haugesund</b> (HAU)	44,500	12.3%	160,600	-2.4%	681	3.8%	30	30.6%
100	<b>Humbly Grove</b> (HUY)	25,200	-1.0%	N/A	N/A	1,072	10.7%	95	-74.6%
101	<b>Liege</b> (LGG)	19,600	-20.5%	54,700	4.1%	2,354	11.8%	47,786	22.8%
102	<b>Ohrd</b> (OHD)	1,900	-37.5%	N/A	N/A	28	-37.8%	1	-45.1%
103	<b>Bucharest</b> (OTP)	N/A	N/A	N/A	N/A	N/A	N/A	N/A	N/A
104	<b>Bologna</b> (BLQ)	N/A	N/A	N/A	N/A	N/A	N/A	N/A	N/A
105	<b>Glasgow Prestwick</b> (PIK)	N/A	N/A	N/A	N/A	N/A	N/A	N/A	N/A
106	<b>Olbia</b> (OLB)	N/A	N/A	N/A	N/A	N/A	N/A	N/A	N/A
107	<b>Charleroi</b> (CRL)	N/A	N/A	N/A	N/A	N/A	N/A	N/A	N/A

----- Preliminary traffic figures -----

### **Total commercial passengers**

**International passengers** (enplaned + deplaned) + **domestic passengers** (enplaned + deplaned) + **direct transit passengers** (passengers who arrive at and depart from the airport on a flight bearing the same number. They are counted only ONCE).

### **Commercial movements**

Landing or take off of an aircraft operating a scheduled or non scheduled commercial service.

### **Freight**

Freight loaded and unloaded (arriving or departing) at the airport. Freight comprises goods, newspapers, diplomatic bags, parcel post and express parcel.

**The ten largest airports on freight – reporting to  
ACI EUROPE**  
(metric tonnes)

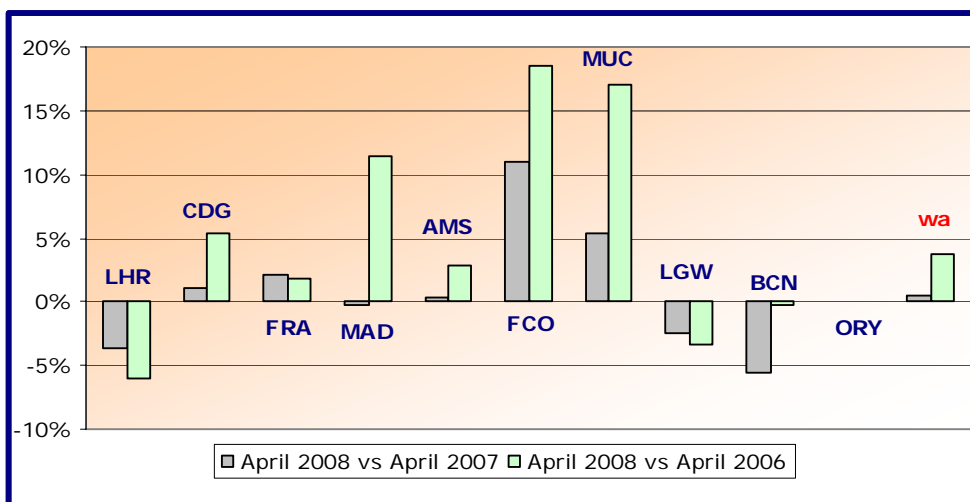
Airports		April 2008	2008v2007 variation %
1	Frankfurt (FRA)	178,786	5.2%
2	Amsterdam (AMS)	138,095	7.1%
3	London Heathrow (LHR)	120,950	15.8%
4	Brussels (BRU)	52,936	-8.2%
5	Cologne/Bonn (CGN)	51,381	-10.1%
6	Liege (LGG)	47,786	22.8%
7	Milan-Malpensa (MXP)	36,518	-8.5%
8	Madrid (MAD)	27,692	12.2%
9	Zurich (ZRH)	24,082	8.1%
10	Nottingham East Midlands (EMA)	22,920	-1.7%

**Group 1**

**Airports welcoming more than 25 million passengers per year  
(percentage traffic variation April 2008 versus 2007 and 2006)**

Airport	2008v2007 variation %	2008v2006 variation %
LHR	-3.6%	-6.0%
CDG	+1.1%	+5.4%
FRA	+2.2%	+1.8%
MAD	-0.2%	+11.4%
AMS	+0.3%	+2.8%
FCO	+11.0%	+18.6%
MUC	+5.4%	+17.1%
LGW	-2.5%	-3.4%
BCN	-5.5%	-0.3%
ORY	+0.1%	+0.0%
<b>wa*</b>	<b>+0.5%</b>	<b>+3.8%</b>

\*weighted average =  $\text{SUM}(\% \text{change} * \text{pax}) / \text{SUM}(\text{pax})$

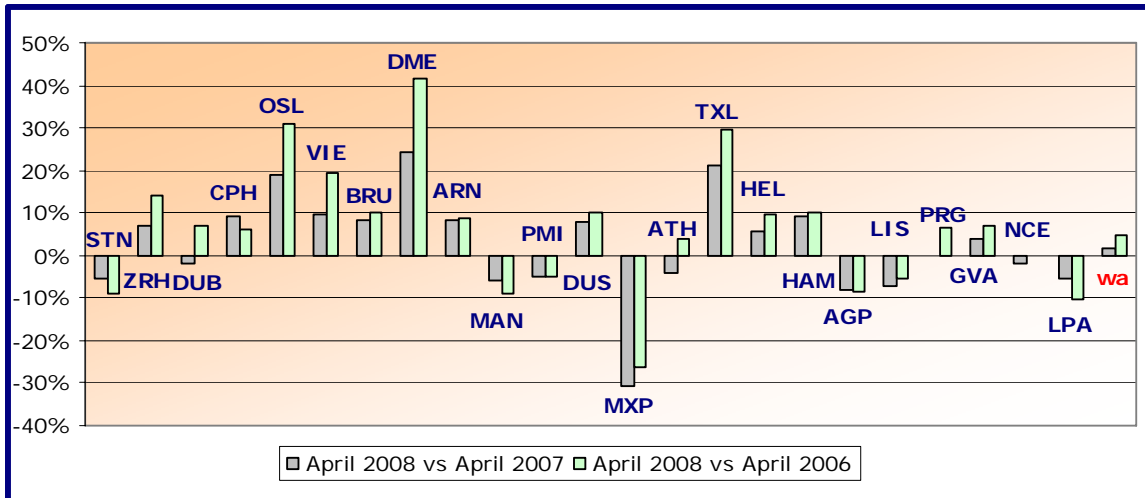




**Group 2**  
**Airports welcoming between 10 and 25 million passengers**  
**per year (percentage traffic variation April 2008 versus 2007 and 2006)**

Airport	2008v2007 variation %	2008v2006 variation %
STN	-5.6%	-8.8%
ZRH	+6.9%	+14.1%
DUB	-1.9%	+6.9%
CPH	+9.2%	+6.3%
OSL	+19.0%	+30.8%
VIE	+9.8%	+19.6%
BRU	+8.3%	+9.9%
DME	+24.2%	+41.6%
ARN	+8.4%	+8.6%
MAN	-6.0%	-9.1%
PMI	-5.0%	-4.9%
DUS	+7.7%	+10.2%
MXP	-30.8%	-26.1%
ATH	-4.0%	+3.8%
TXL	+21.0%	+29.6%
HEL	+5.9%	+9.5%
HAM	+9.2%	+10.3%
AGP	-8.2%	-8.6%
LIS	-7.2%	-5.5%
PRG	+0.1%	+6.8%
GVA	+3.8%	+6.8%
NCE	-1.7%	+0.0%
LPA	-5.3%	-10.1%
<b>wa*</b>	<b>+1.7%</b>	<b>+4.9%</b>

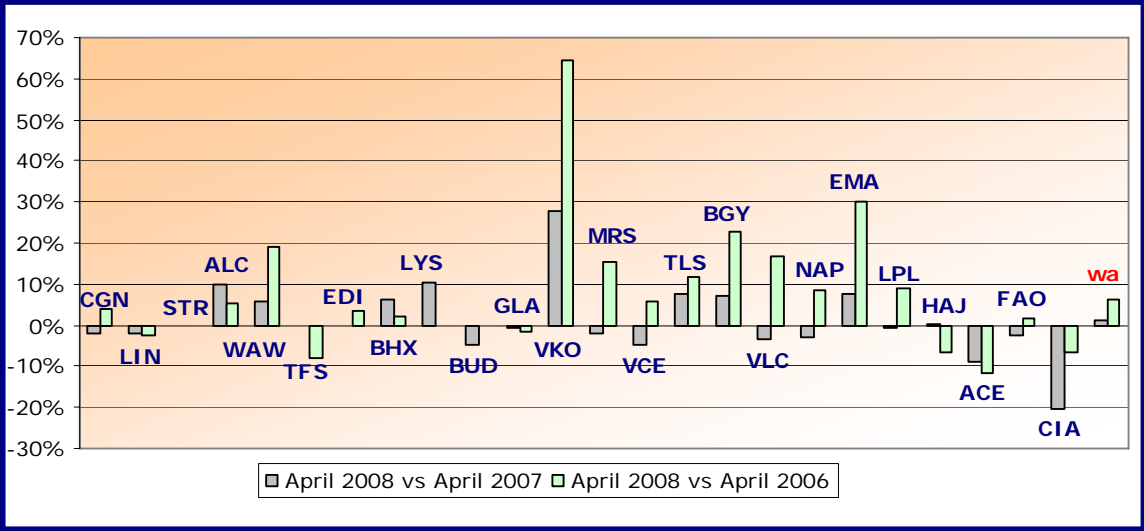
\*weighted average=SUM(%change\*pax)/SUM(pax)



**Group 3**  
**Airports welcoming between 5 and 10 million passengers**  
**per year (percentage traffic variation April 2008 versus 2007 and 2006)**

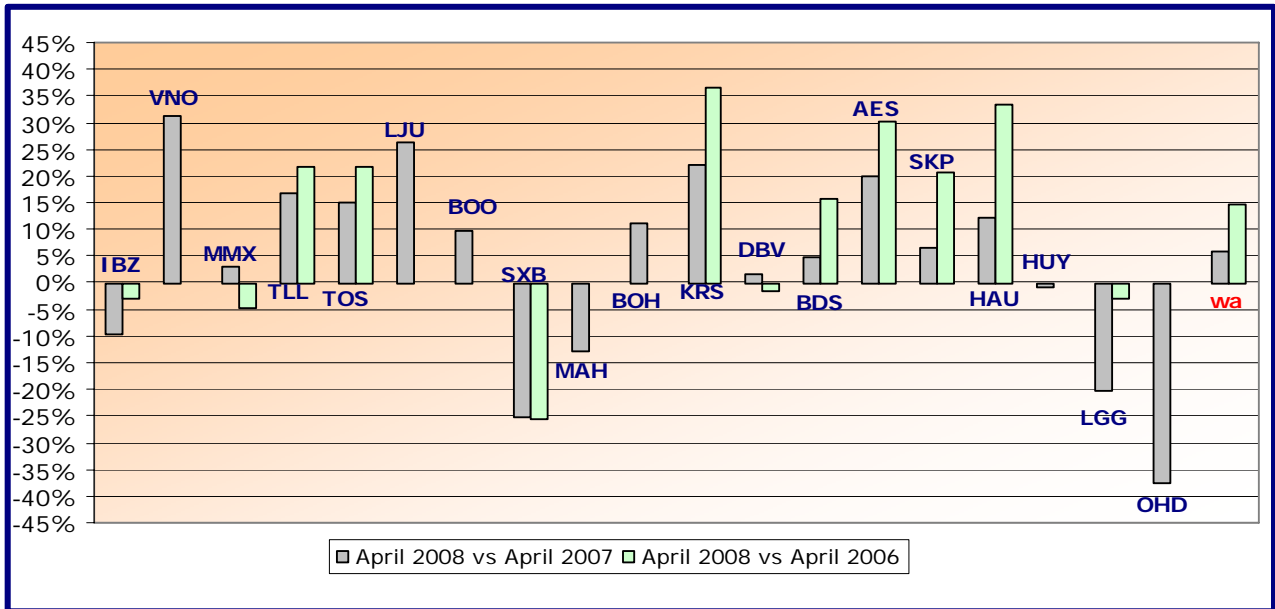
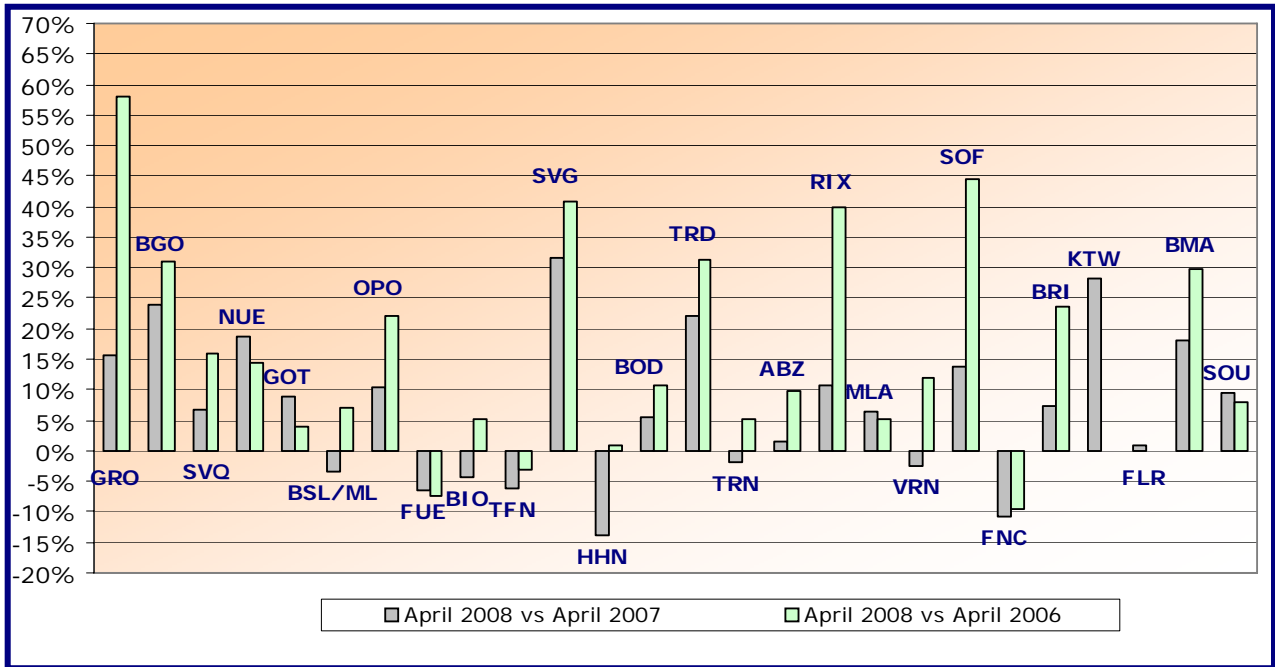
Airport	2008v2007 variation %	2008v2006 variation %
CGN	-2.1%	+4.1%
LIN	-2.2%	-2.7%
STR	-0.3%	N/A
ALC	+10.0%	+5.2%
WAW	+5.8%	+19.0%
TFS	-0.1%	-8.1%
EDI	-0.1%	+3.5%
BHX	+6.3%	+2.2%
LYS	+10.2%	N/A
BUD	-4.7%	-0.3%
GLA	-0.5%	-1.4%
VKO	+27.8%	+64.6%
MRS	-2.2%	+15.6%
VCE	-4.6%	+5.8%
TLS	+7.4%	+11.9%
BGY	+7.3%	+22.8%
VLC	-3.2%	+16.6%
NAP	-2.9%	+8.6%
EMA	+7.5%	+30.2%
LPL	-0.6%	+8.9%
HAJ	+0.4%	-6.8%
ACE	-9.1%	-11.5%
FAO	-2.4%	+1.9%
CIA	-20.5%	-6.7%
<b>wa*</b>	<b>+1.1%</b>	<b>+6.3%</b>

\*weighted average=SUM(%change\*pax)/SUM(pax)



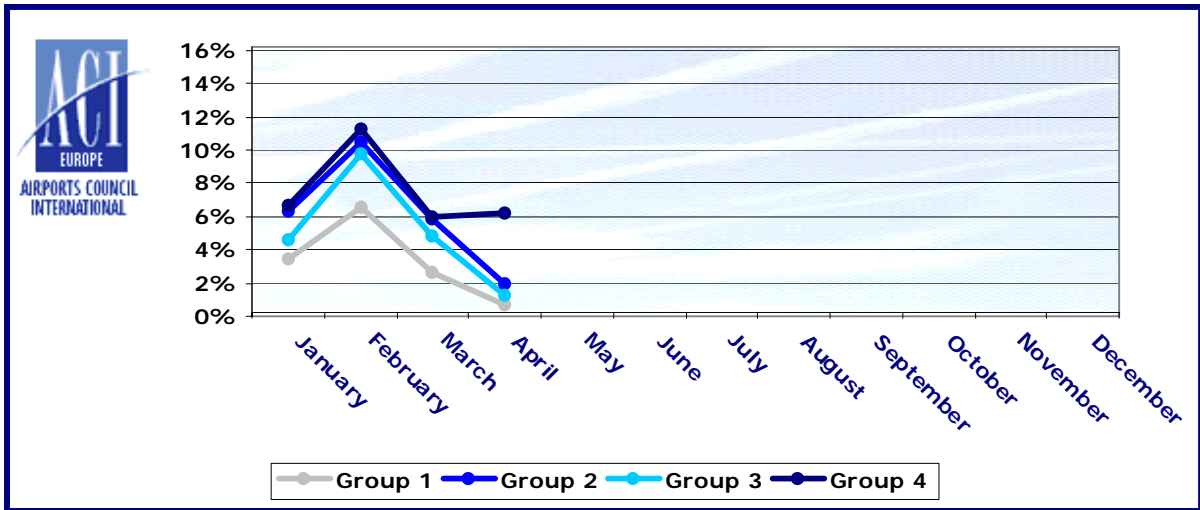
Group 4		
Airports welcoming less than 5 million passengers		
per year (percentage traffic variation April 2008 versus 2007 and 2006)		
Airport	2008v2007 variation %	2008v2006 variation %
GRO	+15.7%	+57.9%
BGO	+23.9%	+31.0%
SVQ	+6.6%	+16.0%
NUE	+18.6%	+14.4%
GOT	+8.7%	+4.0%
BSL/ML	-3.3%	+6.9%
OPO	+10.5%	+22.0%
FUE	-6.4%	-7.5%
BIO	-4.4%	+5.1%
TFN	-6.3%	-3.2%
SVG	+31.5%	+40.7%
HHN	-13.8%	+1.0%
BOD	+5.5%	+10.7%
TRD	+22.0%	+31.4%
TRN	-1.9%	+5.1%
ABZ	+1.6%	+9.9%
RIX	+10.6%	+39.9%
MLA	+6.3%	+5.1%
VRN	-2.3%	+11.9%
SOF	+13.8%	+44.5%
FNC	-10.7%	-9.7%
BRI	+7.4%	+23.6%
KTW	+28.3%	N/A
FLR	+0.8%	+175.2%
BMA	+18.0%	+29.8%
SOU	+9.4%	+8.0%
IBZ	-9.9%	-3.1%
VNO	+31.3%	N/A
MMX	+3.1%	-4.7%
TLL	+16.6%	+21.7%
TOS	+15.0%	+21.8%
LJU	+26.1%	N/A
BOO	+9.6%	N/A
SXB	-25.2%	-25.8%
MAH	-13.1%	N/A
BOH	+11.1%	N/A
KRS	+22.0%	+36.7%
DBV	+1.5%	-1.5%
BDS	+4.7%	+15.8%
AES	+20.1%	+30.1%
SKP	+6.6%	+20.7%
HAU	+12.3%	+33.4%
HUY	-1.0%	N/A
LGG	-20.5%	-3.0%
OHD	-37.5%	N/A
<b>wa*</b>	<b>+6.0%</b>	<b>+14.8%</b>

\*weighted average=SUM(%change\*pax)/SUM(pax)



## Year-to-date airport passenger trends

The graphic illustrates and compares the trends of the different airport Groups 1, 2, 3 and 4 for 2008.



The graphic compares the amount of total commercial passengers 2008 with 2007. The airports included, in this graphic, are: LHR, FRA, CDG, AMS, MAD, LGW, FCO, MUC, BCN, ORY, STN, MAN, MXP, ZRH, CPH, ARN, DUB, OSL, BRU, VIE, DUS, ATH, PMI, AGP, DME, HEL, TXL, LIS, HAM, PRG.

